

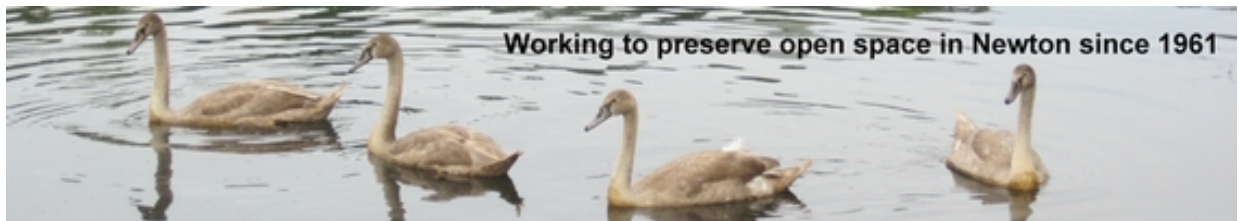


Newton Conservators

E-Bulletin

Friday, June 16, 2017

... Newton's land trust working to preserve open space since 1961



June is busting out all over!

This weekend concludes our spring walk and event season with an invasives session at Hemlock Gorge and our annual Fern Walk with expert Don Lubin on Saturday. And don't miss the Paddles and Picnics event at Crystal Lake on Sunday. Other summer events are listed here as well. And our latest summer edition of Newton Conservators under the editorship of Ken Mallory is hot off the press with an online link here.

Event Calendar

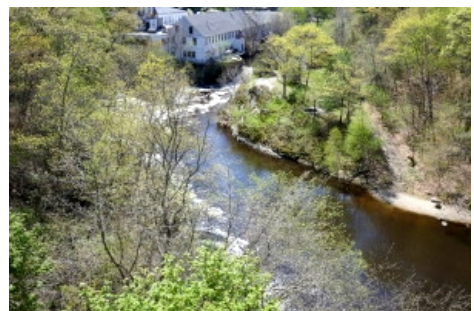
Saturday, June 17, 9:30 am – 12:00 noon

Charles River Quinobequin/Hemlock Gorge Invasives Pull.

Near 2 Ellis St., Newton, MA 02464

www.newtonconservators.org/21hemlock.htm

We will control garlic mustard, knotweed, and black swallowwort infestations inside beautiful Hemlock Gorge Park, and also the adjoining lovely walking trail along the Charles River at Quinobequin Rd. Help us keep the invaders out of these beautiful parks! Wear long pants and garden gloves. Trash bags will be provided; the plants must be disposed of as trash, not as yard waste. Meet at the parking lot at corner of Quinobequin Rd. and Ellis St. at Rt. 9 intersection. Leaders are Jerry Reilly and Katherine Howard, 617-527-1796 (home) or 617-721-2571 (cell).



Saturday, June 17 from 11:00 am - 1:00 pm (Rain Date: June 18)

Ferns of Kennard Park

<http://newtonconservators.org/24kennard.htm>

Kennard Park is a fairly large conserved area off Dudley Road that lies between Chestnut Hill and Newton South High School. We will see more than a dozen common ferns and one club-moss. There won't be much climbing involved. Wear long pants, and bring a lens if you have one and any ferns you'd like me to identify. Trip Leader: Don Lubin (617-254-8464), <http://nefern.info>, don@nefern.info



Saturday June 17 9:30 am -2 pm

Newton Aqueducts Walk

Appalachian Mt Club Boston Chapter Trip

Eight miles, generally smooth and flat terrain, with one steep section at Hemlock Gorge (individuals can skip this if they want to). Meet in Newton Centre, at the corner of Centre Street and Tyler Terrace. Park on Tyler Terrace or a nearby street or take the T (Green Line D/Riverside) and get off at the Newton Centre stop. Meeting place is about 1/4 mile away. Bring water, lunch, snacks, bug repellent. No children or dogs. Heavy rain cancels. If uncertain, contact leader Lisa Fleischman: 617-244-5747 or lfleisch2@gmail.com. Co-leader is Jim Hammond.



Sunday, June 18, 9:30 am – 1 pm

5th Annual Tour de Newton

Sponsored by Bike Newton

The Tour de Newton is a 20 mile ride that goes through each of the 13 villages with riders starting in the village of their choice, stopping at each village along the way where they were greeted with history, water and treats. This ride is a relatively leisurely ride for most of the route with some hills. There will be riding in groups with a ride leader and sweep “no rider left behind”. The route is also designed in a loop so that riders can choose to do only part of the ride and have a fairly straight forward way back to where they started. Most riders finish in 3 hours. This is a great event for riders of all ages with several choices for rides. Further info at <http://bikenewton.org/event/the-2017-tour-de-newton/>. This is a reminder – preregistration was required for this event (consider riding next year!).



Sunday, June 18, 1 - 5 pm

Paddles and Picnics

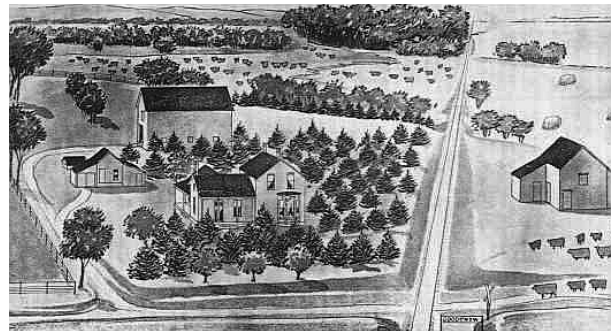
Crystal Lake, 20 Rogers St. Newton Highlands

The Crystal Lake Conservancy and the Newton Parks and Recreation Department invite you to join them for a Sunday afternoon of activities on Crystal Lake. Participants may sign up for half hour slots between 1-4:30 pm to enjoy the pleasures of canoeing/kayaking/paddle boarding. A lifeguard will be on duty and all participants will be required to wear life jackets and sign a waiver. Children under 16 must be accompanied by an adult while on the water. View the Conservancy's vision of the new Bathhouse and learn about their ongoing watershed activities to protect Crystal Lake! \$10 per canoe/kayak/paddleboard. Bring your own picnic to enjoy in the park. Season Pass and Day Pass Swimming - open as usual. Enjoy the installation of Hooked on Newton Yarn Art Decorations! Visit www.CrystalLakeConservancy.org or call Janice Bourque at 617-967-0797.



Sunday, June 25, 2 pm
Brook Farm: A Utopia and more
Historic Newton Walk

In the 1840s, Brook Farm was a utopian community for Transcendentalists including Nathaniel Hawthorne, who used it as the setting for *A Blithedale Romance*. Yet historical references to the area go back to 17th century preacher John Eliot. The land was also used as a poor farm, a training camp during the Civil War, and an orphanage. Learn about the layers of Newton history with former Newton South High School English teacher Dwight MacKerron as you walk through the site. Park in the Gethsemane Cemetery, 670 Baker Street, West Roxbury, and meet in front of the cemetery office. Suggested donation, \$10 per person. Information: 617-796-1450. Sponsored by Historic Newton (<http://www.historicnewton.org/>).



Monday, July 10, 6:30 to 8:30pm.
Dinner on the Farm 2017 - Welcome to Our (Farmstead) Table!
Newton Community Farm

Newton Community Farm invites you to its the annual Dinner on the Farm, a beautiful evening of fantastic food, breathtaking views of their fields, and the company of others who share your love of your local community farm. And new this year....the farm is honored to welcome Chad and Sharon Burns of Farmstead Table, who will be preparing the meal, highlighting fresh produce from our farm. Registration deadline is July 5. \$75 for Friends of the Farm, and \$85 for non-Friends of the Farm. Reserved tables for 8 or 10 people are available in limited quantities. Your ticket covers the cost of the dinner, and an additional contribution to NCF education programs. For further info visit newtoncommunityfarm.org.



Sunday, July 30, 2 pm

Who Inspired our Schools? - A Newton Cemetery Tour

Historic Newton Walk

Many elementary and middle schools are named for notable Newtonians. Stroll through the Newton Cemetery to see the final resting places and learn more about the lives of those whose legacy continues in our public schools. Meet in front of the chapel inside the main gate at 791 Walnut Street, Newton Centre. Park in the lot to the left of the chapel. Suggested donation, \$10 per person. Information: 617-796-1450. Sponsored by Historic Newton (<http://www.historicnewton.org/>).



Report Wild Turkey Sightings

Sportsmen and women, birders, and other wildlife enthusiasts are encouraged to assist with MassWildlife's Annual Wild Turkey Brood Survey. The public is asked to record sightings of hens, poults (newly-hatched turkeys), and males (both juvenile and adult). For help identifying male and female turkeys and determining if a male is a juvenile (jake) or an adult (tom), [please click here](#).



MassWildlife conducts the Annual Brood Survey from June 1 through August 31 each year to estimate the number of turkeys. The brood survey helps our biologists determine productivity and compare long-term reproductive success while providing an estimate of fall harvest potential. Turkey nesting success can vary annually in response to weather conditions, predator populations, and habitat characteristics. Citizen involvement in this survey is a cost-effective means of gathering useful data, and can be a fun way for people to connect with nature. Be sure to look carefully when counting turkey broods, the very small poults may be difficult to see in tall grass or brush. MassWildlife is interested in turkey brood observations from all regions of the state, including rural and developed areas.

[Observations can now be reported online](#). Simply fill in all the information and click submit and your turkey observations will be logged by MassWildlife. You can still download and [print a Turkey Brood Survey form](#) to complete over the course of the summer. Completed forms should be mailed after August 31st to: Brood Survey, MassWildlife Field Headquarters, 1 Rabbit Hill Road, Westborough, MA 01581. If you've submitted your observations online, please do not mail in duplicate observations.

Newton Conservators Newsletter

The Newton Conservators publishes its newsletter approximately four times a year. It is distributed by mail to the membership and is available online. Extra copies are also available at the Newton Free Library. Spring is here! Just in time, here is the link to our Summer Newsletter—chock-full of interesting information: http://www.newtonconservators.org/newsletters/17_06.pdf. Here are some of the wonderful articles in this issue:

- The Great Dam at Watertown -
http://www.newtonconservators.org/newsletters/17_06_watertown_dam.pdf
- Newton Upper Falls Greenway
http://www.newtonconservators.org/newsletters/17_06_greenway.pdf
- Celebrations for the Environmental Science Program's 50th Anniversary
http://www.newtonconservators.org/newsletters/17_06_esp_50th.pdf
- Habitat Network: From the Actions of You and Your Neighbors, Habitat Can Emerge!
http://www.newtonconservators.org/newsletters/17_06_habitat_network.pdf
- Leaf Blower Restrictions
http://www.newtonconservators.org/newsletters/17_06_leaf_blower.pdf
- Energy Efficiency: What It Is and Why It Matters
http://www.newtonconservators.org/newsletters/17_06_energy.pdf
- Boston Harbor Islands National Park Area
http://www.newtonconservators.org/newsletters/17_06_harbor_islands.pdf
- President's Message
http://www.newtonconservators.org/newsletters/17_06_president.pdf

2017 Officers and Directors

Beth Wilkinson, *President*
Chris Hepburn,
Vice President
AnnaMaria Abernathy,
Secretary
Katherine Howard,
Treasurer

Board of Directors

David Backer
Dan Brody
Bonnie Carter
Michael Clarke
Margaret Doris
Henry Finch
Robert Fizek
Maurice Gilmore
Daniel Green
William Hagar
Ted Kulinski
Ken Mallory
George Mansfield
Larry Smith

Advisors

Lisle Baker
Rodney Barker
Octo Barnett
John Bliss
Lee Breckenridge
Lalor Burdick
Lucy Caldwell-Stair
Michael Collora
Douglas Dickson
Ann Dorfman
Bart Hague
Judith Hepburn
Duane Hillis
Peter Kastner
Alison Leary
William Leitch
Dan Lubin
Brooks Mathewson
Eric Olson
Anne Pearson
Richard Primack
Eric Reensterina
Jan Regasin
Patricia Robinson
Jane Sender
William Shovel
Willis Wang
Brian Yates

The Great Dam at Watertown

By Elisabeth Cianciola, Aquatic Scientist, Charles River Watershed Association (CRWA)



Watertown Dam from the southern bank of the Charles River looking upstream, May 31, 2011

The practice of damming the Charles River has a rich history that begins at the site of today's Watertown Dam. A fish weir was constructed here in 1632, not far above what was then the head-of-tide on the Charles River. One century later, historical records indicate that upstream watershed residents complained that the Watertown Dam impeded fish passage, and mill operators were ordered not to replace the stones at the dam until May 1st.

By 1814, a new dam with a fishway was constructed here. In the following years, various industries including grist mills, a fulling mill, a sawmill, a cotton mill, a foundry, the paper mill that manufactured the first paper bag, and even Bakers Chocolate Company established their roots around the Watertown Dam. In response to damages incurred to the existing dam in 1955 as a result of Hurricane Diane, the 8'-high, 180'-long concrete dam we have today was built in 1966. The Denil fish ladder was added in 1972.

Despite the colorful history of the Great Dam, one thing hasn't changed: upstream

watershed residents and environmental advocates continue to complain that the dam impedes fish passage. While the Charles River has a healthy run of river herring, with more than 300,000 fish returning to the Charles to spawn every spring, video monitoring and acoustic tagging studies performed by the Massachusetts Division of Marine Fisheries indicate that the fish ladder passes very few male American shad and no female American shad.

Female American shad are the largest fish that would use a fish pass at the Watertown



Massachusetts Department of Fish and Game Division of Marine Fisheries cleans the fish ladder at the Watertown Dam, May 28, 2010

Continued on page 2



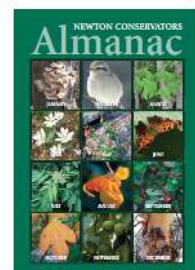
Visit our Facebook page and like us at <https://www.facebook.com/NewtonConservators>

Membership & Publications!



Did you know that you can Join the Newton Conservators online. And consider a gift membership for a conservation-minded friend. New members get a trail guide as well!

Visit <http://www.newtonconservators.org/membership.htm> for details on membership options. Did you know that you can register and pay for membership, events, buy a copy of our Almanac or newly revised Trail Guide, or make a donation to the Newton Conservators

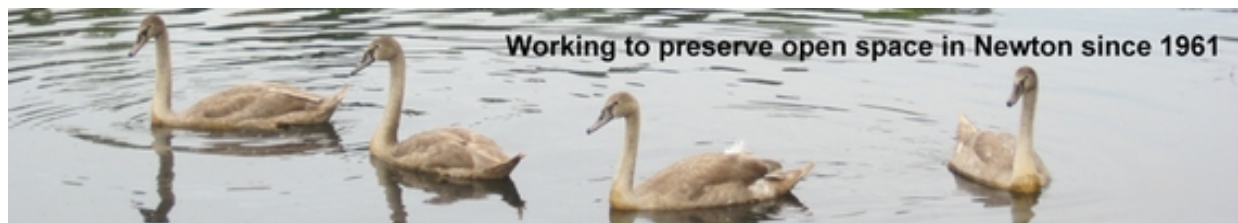


online? The Trail Guides and Almanac are also available at your local Newton Bookstores. Shop Local!

Mission: *The Newton Conservators promotes the protection and preservation of natural areas, including parks, playgrounds, forests and streams, which are open or may be converted to open space for the enjoyment and benefit of the people of Newton. It further aims to disseminate information about these and other environmental matters. A primary goal is to foster the acquisition of land, buildings and other facilities to be used for the encouragement of scientific, educational, recreational, literary and other public pursuits that will promote good citizenship and the general welfare of the people of our community.*

The Newton Conservators organization was formed as a not-for-profit in June 1961.

- E-Bulletin Editor Ted Kuklinski, Newton Conservators (dolanpond@aol.com)



[Click to view this email in a browser](#)

If you no longer wish to receive these emails, please reply to this message with "Unsubscribe" in the subject line or simply click on the following link: [Unsubscribe](#)

[Click here](#) to forward this email to a friend

Newton Conservators
PO Box 590011
Newton, Massachusetts 02459
US

[Read](#) the VerticalResponse marketing policy.

Vertical DELIVERED BY
response
Try It Free Today!