



**NEWTON
CONSERVATORS**

Newton's land trust working to preserve open space since 1961

**Newton Conservators
E-Bulletin**

Wednesday, June 17, 2020



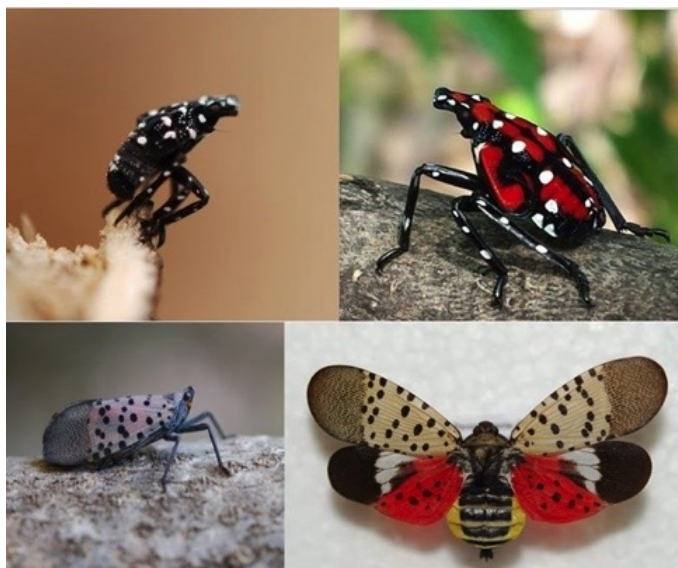
Topics

- [Spotted Lanternfly Lecture](#)
- [Farmers Market Openings](#)
- [Quinobequin Trails](#)
- [Beacon Street Bike Lanes](#)
- [Turtles and Turkeys](#)
- [Inspiration in Covid Times](#)
- [Membership](#)

TONIGHT!

Spotted Lanternfly - the Latest Invasive Insect Virtual Zoom Lecture

by Joshua Brookner - MA Department of Agricultural Resources
Wednesday, June 17, 7:00-8:30 pm



“What is that pretty looking bug?” you may be tempted to say. None other than the Spotted Lantern Fly (SLF), and when you hear more about it, you may experience more dread than delight. It has wreaked havoc in Pennsylvania after its discovery there in 2014 and is making invasive moves slowly northward towards Massachusetts. According to the [Penn State Extension](#):

“The spotted lanternfly uses its piercing-sucking mouthpart to feed on sap from over 70 different plant species. It has a strong preference for economically important plants including grapevines, maple trees, black walnut, birch, willow, and other trees. The feeding damage significantly stresses the plants which can lead to decreased health and potentially death.

As SLF feeds, the insect excretes honeydew (a sugary substance) which can attract bees, wasps, and other insects. The honeydew also builds up and promotes the growth for sooty mold (fungi), which can cover the plant, forest understories, patio furniture, cars, and anything else found below SLF feeding.”

It sounds like a terrible sequel to other insect invasions we have endured such as

Gypsy Moth, Hemlock Woolly Adelgid, Asian Long Horn Beetle, Emerald Ash Borer, and Winter Moth! It will be very important to be on the alert to detect, identify, and report this insect and control it before it spreads.

With the library closed to visitors, you can enjoy this informative lecture from the comfort of your home on Zoom. Joshua Bruckner, Forest Pest Outreach Coordinator, Crop & Pest Services with the Massachusetts Department of Agricultural Resources. His illustrated lecture on the Spotted Lanternfly will give us the latest information on this new invader. He coordinated and delivered outreach programs about Asian Longhorn Beetle awareness in Massachusetts, during its decimation of trees in Worcester County.



This event is cosponsored by [Newton Conservators](#), [Green Newton](#), [Newton Tree Conservancy](#) and the [Newton Free Library](#). Registration at <https://newtonfreelibrary.libcal.com/event/6732024> is required via the Newton Free Library which is hosting the event. After registering, you'll receive a confirmation email. An additional email with the actual Zoom login link will also be sent.

Saturday, June 20, 9 am to 1 pm
Tuesday, June 30, 2 pm to 6 pm
Farmer's Market Opening Days
Newton South High School, 140 Brandeis Rd, Newton MA 02459

Due to Covid-19, Newton Farmer's Markets on Elm Street (Sat) and Cold Spring Park (Tue) have moved to Newton South High School. The Saturday market opens this weekend and the Tuesday market later in the month on June 30, with new procedures.

Get complete information at http://www.newtonma.gov/gov/parks/programs/farmers_market/default.asp.



Many of Newton's farmers' market vendors will offer the option to place and pay for orders prior to market day and then pick up pre-purchased items curbside. Pre-orders will be handled by each individual vendor. It should be noted that vendors have different ordering processes and different cut-off dates for pre-ordering. Curbside pickup will be directly across from the Farmer's Market vendor area and will be clearly marked. Customers should have a sign on their passenger side window with the name under which the order was placed. Customers remain in their car and a team of volunteers will gather your orders and place them in your trunk or back seat.

Come support our local farmers including Newton Community Farm while practicing safe distancing. All shoppers are required to wear a mask. No dogs allowed. Recommending that children remain home for their safety

Thursday, June 25, 2020, 6:30 p.m. - 8 p.m
Quinobequin Road and Trail Improvements
Concept Design Listening Session

Safety and accessibility improvements along Quinobequin Road have been studied and discussed for many years. Massachusetts DCR is committed to addressing the existing safety issues along Quinobequin while also making sustainable and long-

lasting improvements to stormwater management and riverine ecology.

On Thursday, June 25, 2020, DCR's Quinobequin Road and Trail Improvements Project Team is hosting a virtual meeting for community advocates to introduce the project, share the schedule and plans for public involvement and to hear your thoughts on project goals and key elements.

This meeting will be followed by a robust public process to provide all members of the public with meaningful opportunities to share their input throughout the project.

Register in advance for this webinar here:

https://vhb.zoom.us/webinar/register/WN_8STGP-0FTJiEtW4Ht_yJUPQ

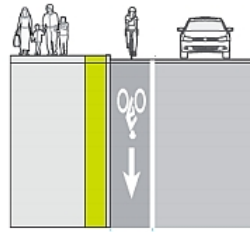
After registering, you will receive a confirmation email containing information about joining the webinar. Register for the event by close of business on Wednesday, June 24. Should you have any trouble registering for the event, please feel free to contact Peter Sorensen, psorensen@vhb.com.

Wednesday, June 24, 5-7 pm Beacon Street Bike Lanes

The City of Newton is planning to update the pavement markings on Beacon Street between Centre Street and Washington Street. The City is looking to incorporate a painted bike lanes on both sides of the street which would eliminate on-street parking in certain locations. The public meeting for the proposed Beacon street bike lanes that had been scheduled for March 12th has been rescheduled for **Wednesday, June 24th from 5:30pm-7pm**. Details and the Zoom link can be found

at https://mcusercontent.com/187dc781724e10a997563bdb5/files/3963a8ea-a203-4f71-957f-9d598dccc4c4/Meeting_Notice_Beacon_St_Bike_Lane_v3.pdf

Virtually attend the meeting to learn more about the plans.



Turtles and Turkeys

Turtles are now on the move to reach their nesting sites. Watch for turtles crossing the road at this time of year. If you can safely stop to help a turtle, move it off the road in the direction it was heading. Do not take it home or to another location.

MassWildlife conducts a Brood Survey from June 1 through August 31 each year to estimate the number of **turkeys** in the state. The brood survey helps biologists determine productivity and compare long-term reproductive success while providing an estimate of fall harvest potential. Turkey nesting success



can vary annually in response to weather conditions, predator populations, and habitat characteristics. Citizen involvement in this survey is a cost-effective means of gathering useful data, and can be a fun way for people to connect with nature. Record sightings of hens, poults (newly-hatched turkeys), and males (both juvenile and adult). For help identifying male and female turkeys and determining if a male is a juvenile (jake) or an adult (tom), please click [here](#). Be sure to look carefully when counting turkey broods, the very small poults may be difficult to see in tall grass or brush. MassWildlife is interested in turkey brood observations from all regions of the state, including rural and developed areas. See details at <https://www.mass.gov/news/report-wild-turkey-sightings>

Inspiration in Covid Times



PLEASE JOIN OR RENEW YOUR MEMBERSHIP



**NEWTON
CONSERVATORS**

We would be very grateful for your continued support by joining Newton Conservators or renewing your membership. Perhaps, consider renewing at a higher level, adding an extra donation, or purchasing a gift membership for someone else who is passionate about open space.

You can renew or join the Newton Conservators online at <https://newtonconservators.org/renewal-2020/>. A link to our annual members' renewal letter outlining last year's activities can also be found at the above link.

Donations may be made at our secure link <https://newtonconservators.123signup.com/donation/21167>. As a 501(c)(3) non-profit, we also accept donations for a number of affiliated local open space groups including Friends of Webster Woods, Friends of Cold Spring Park, Friends of Houghton Garden, the Riverside Trails Working Group, a Trails Fund, and others. As part of the donation process, you can specify a group in the "Comments" section of the form. Thanks so much!

Mission: The Newton Conservators promotes the protection and preservation of natural areas, including parks, playgrounds, forests and streams, which are open or may be converted to open space for the enjoyment and benefit of the people of Newton. It further aims to disseminate information about these and other environmental matters. A primary goal is to foster the acquisition of land, buildings and other facilities to be used for the encouragement of scientific, educational, recreational, literary and other public pursuits that will promote good citizenship and the general welfare of the people of our community.

- E-Bulletin Editor & President Ted Kuklinski, Newton Conservators (ebulletin@newtonconservators.org)

[Click to view this email in a browser](#)

If you no longer wish to receive these emails, please reply to this message with "Unsubscribe" in the subject line or simply click on the following link: [Unsubscribe](#)

[Click here](#) to forward this email to a friend

Newton Conservators
PO Box 590011
Newton, Massachusetts 02459
US

[Read](#) the VerticalResponse marketing policy.

vertical
response
DELIVERED BY
Try it Free Today!