



# Newton Conservators E-Bulletin

Wednesday, May 25, 2022

... Newton's land trust working to preserve open space since 1961



## Late May and June Schedule!

Whew - what a spring! Newton Conservators has had SO many events already and we have lots more coming up!

You don't want to miss the opportunity to hear one of the absolute most important advocates for native species, [Doug Tallamy, in a Thursday evening webinar on Sustainable Landscape Design](#) cosponsored by the Conservators, Newton Free Library, Green Newton and Newton Tree Conservancy. See our events listing below for full details and free registration.



Our Spring Webinar Series has one event left with a presentation by City Forester. Marc Welch on [Newton's Street Trees: Past, Present, and Future](#).

Our [Spring 2022 Walk Series](#) continues with two of our highly popular kid's events left as well as our informative annual fern walk with expert Don Lubin.

- [Kids - Nature Ecology Games - Barbara Bates - 5/28/22](#)
- [Kids - Webster Woods Adventure - Barbara Bates & Sam Corbin - 6/11/22](#)
- [Fern Walk at Saw Mill Brook - Don Lubin - 6/11/22](#)

Our Invasives Removal group continues its aggressive schedule of invasive pulls with many many events currently scheduled through July and listed below in our Events schedule.

Our [Spring 2022 Newton Conservators Newsletter](#) is online and our Summer 2022 edition will be out shortly.

Check out some new available videos described later in this email including a recent webinar on invasive Jumping Worms. Also be sure to see the alert on the

dreaded Spotted Lanternfly which has now been found in quite a few places in Massachusetts.

And a special welcome to our many new subscribers who learned of us at recent events! Hoping to see you out and about in Newton!

You can subscribe to this eBulletin by sending an email to [ebulletin@newtonconservators.org](mailto:ebulletin@newtonconservators.org) or unsubscribe by clicking the unsubscribe link at the end of this email.

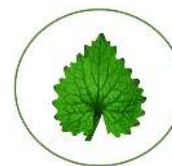
## Upcoming Events

*Enjoy Nature . . . with the Newton Conservators  
Walks, Webinars, Invasive Removal & More!*

**Thursday, May 26, 2022, 10-12 pm**

**Pony Truss Trail and Riverside Park Invasives Pull**

<https://newtonconservators.org/events/pony-truss-trail-and-riverside-park-invasives-pull-2/>



Help tackle the garlic mustard, buckthorn, bittersweet, and japanese knotweed in our beautiful new park . Help keep these invaders out! Wear long pants tucked into socks, closed shoes, and garden gloves. Trash bags will be provided; the City will dispose properly as trash, not as yard waste. Leaders are Ted Chapman and Katherine Howard, 617-721-2571.



Directions: For the location of Riverside Park use this link:

<https://goo.gl/maps/nWmmRm3YxAoaSVi86>. Access the park from Recreation Road on the North side of Leo J Martin Golf Course; or from Grove St take the access road (I-95 North, stay to the right after passing under the RR Bridge. Park in the lot for Riverside Park or along the access road from Grove St.

**Thursday, May 26, 2-6 pm (unless sold out earlier)**

**Tomato Plant Sale (and more)**

**Newton Community Farm**



Newton Community Farm is planting tomatoes in the field and they have extra to share! Stop by this Thursday afternoon starting at 2 pm. They'll have approximately 400 plants of varieties that they grow at the Farm, including heirlooms, slicers, and cherry tomatoes. They're selling these un-potted, by the plant, for \$2 each. They also have a limited amount of several other types of vegetables (also un-potted, \$2 per

plant) and perennial herbs (potted, \$4 per plant). And they'll have Vermont Compost Company's manure compost available at \$15 per 20-quart bag to give your soil a boost. Cash, checks (made payable to Newton Community Farm), credit cards, and SNAP accepted. They'll be there until 6 pm unless they sell out sooner and close up early, in which case they'll post that info. on their website - [newtoncommunityfarm.org](http://newtoncommunityfarm.org). Thanks for supporting our local community farm.

**Thursday, May 26, 2022 7 - 8:30 pm**

**Sustainable Landscape Designs: Nature's Best Hope**  
**Virtual Lecture**



**Professor Doug Tallamy, University of Delaware**

**Co-sponsored by Newton Free Library, Newton Conservators, Green Newton, and Newton Tree Conservancy**

Join renowned expert Doug Tallamy for a talk that will reveal how ineffective our current landscape designs have been at preserving the plants and animals that sustain us. Recent headlines about global insect declines and three billion fewer birds in North America are a bleak reality check and a wakeup call for homeowners to create landscapes that enhance local ecosystems rather than degrade them. Learn how native plant communities that sustain food webs, sequester carbon, maintain diverse native bee communities and manage our watersheds, can empower everyone to play a significant role in the future of the natural world.



Doug Tallamy is the T. A. Baker Professor of Agriculture in the Department of Entomology and Wildlife Ecology at the University of Delaware, where he has authored 106 research publications and has taught insect related courses for 41 years. He is the author of several books, including his most recent, *The Nature of Oaks*. In 2021 he co-founded Homegrown National Park with Michelle Alfandari, a 20 million acre network of viable habitats that will provide vital corridors connecting the few natural areas that remain.

This program is part of the Green Newton series and is cosponsored by Green Newton, Newton Conservators, and Newton Tree Conservancy. Registration for this program will end two hours before the start time. The login information will be sent just after registration closes. Please be sure to check your spam folder in case it lands there. Register [HERE](#)

**Saturday, May 28, 2022 from 10-11:30 am**

**Kids - Nature Ecology Games**

**Leader: Barbara Bates**

## Riverside Park Newton Conservators Spring Walk Series - 2022



Learn about the life strategies of baby animals at Riverside Park by playing games focusing on camouflage, population dynamics, nurseries, and more. Open to children between five and nine years old accompanied by an adult. Registration limited to 12 children. A wait list will be available if



registration is filled. Meeting location and directions will be mailed to all registrants before the walk. Please contact the walk leader for permission before bringing children beyond this age group. Trip Leader: Barbara Bates (B.L.Bates@rcn.com)

## Saturday, June 4, 2022, 9:30 am - 12:00 pm Invasives Pull at Sawmill Brook Sawmill Brook Conservation Area, 93 Vine Street, Chestnut Hill, MA



<https://newtonconservators.org/events/invasives-pull-at-sawmill-brook-4/>

Sawmill Brook Conservation Area is a lovely, long, natural trail connecting Newton to West Roxbury. It has garlic mustard and black swallow-wort infestations at its entrances and along Lagrange St. and Wayne Road borders. We will work at each entrance and along Lagrange and Wayne, and patrol previously worked areas. Wear long pants and garden gloves. The invasive plant material will be properly disposed of as trash, not as yard waste. Leaders are Francesco DiTullio and Katherine Howard, 617-721-2571.



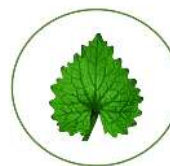
## Saturday, June 4, 2022 Noon- 6 pm (rain date June 6) Newton Porchfest Free Outdoor Music Auburndale, Lower Falls and Waban



<https://newton.porchfest.info/>

Newton PorchFest is an afternoon of free music performances on porches, front lawns and driveways around the city of Newton. There are over 100 musical acts performing from noon to 6PM in the Newton villages of Auburndale, Lower Falls and Waban. Gather family and friends, grab a blanket or chair and stroll the neighborhoods enjoying a wide variety of musical styles. There will be all sorts of musical genres! Jazz, Pop, Rock, Funk, R&B, Classical, and more! Check out the schedule (<https://newton.porchfest.info/>) to plan your route - maybe ride a bike to cover more ground!

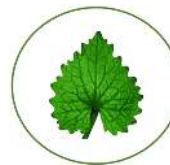
**Sunday, June 5, 2022, 1:00 pm - 3:00 pm**  
**Quinobequin/Hemlock Gorge Invasives Pull**  
**Hemlock Gorge Ellis Street lot, 2 Ellis Street, Newton, MA**  
<https://newtonconservators.org/events/quinobequin-hemlock-gorge-invasives-pull-6/>



We will control garlic mustard, knotweed, and black swallow-wort infestations inside beautiful Hemlock Gorge, and the adjoining walking trail along the Charles River at Quinobequin Rd. Help keep the invaders out of these beautiful parks! Wear long pants and garden gloves. Trash bags will be provided; the City will properly dispose as trash, not as yard waste. Leaders are Jerry Reilly and Katherine Howard, 617-721-2571.



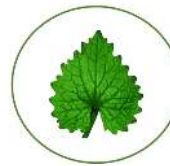
**Tuesday, June 7, 2022 1:00 pm - 3:00 pm**  
**Cold Spring Park Invasives Pull**  
**Cold Spring Park Beacon Street trailhead**  
**1200 Beacon Street, Waban, MA**  
<https://newtonconservators.org/events/cold-spring-park-invasives-pull-11/>



Cold Spring Park is being invaded by garlic mustard, knotweed, buckthorn, and other species. We will keep the Cochituate Aqueduct walk under control after previous years' pulls, and work on the meadow and Beacon Street parking lot areas. Wear long pants and garden gloves. The invasive plant material will be properly disposed of as trash, not as yard waste. Leaders are Alan Noguee, 617-564-1664 and Katherine Howard, 617-721-2571.



**Saturday, June 11, 2022 9:30 am - 12:00 pm**  
**Quinobequin/Hemlock Gorge Invasives Pull**  
**Hemlock Gorge Ellis Street lot**  
**2 Ellis Street, Newton, MA**  
<https://newtonconservators.org/events/quinobequin-hemlock-gorge-invasives-pull-7/>



We will control garlic mustard, knotweed, and black swallow-wort infestations inside beautiful Hemlock Gorge, and the adjoining walking trail along the Charles River at Quinobequin Rd. Help keep the invaders out of these beautiful parks! Wear long pants and garden gloves. Trash bags will be provided; the City will properly dispose as trash, not as yard waste. Leaders are Jerry Reilly and Katherine Howard, 617-721-2571.



**Saturday, June 11, 2022 from 10-11:30 am**

## Kids - Webster Woods Adventure

**Leader: Barbara Bates & Sam Corbin**

**Newton Conservators Spring Walk Series - 2022**



Join Barbara Bates and Sam Corbin, Newton Conservators' Board members, in navigating the more common trails in Webster Woods while admiring rock piles, lichens, and hopefully Pink Lady Slippers! Open to children between five and nine years old accompanied by an adult. Registration limited to 12 children. A wait list will be available if registration is filled. Meeting location and directions will be mailed to all registrants before the walk. Please contact the walk leader for permission before bringing children beyond this age group.  
Trip Leader: Barbara Bates (B.L.Bates@rcn.com)



Photo: Ken Mallory

**Saturday, June 11, 2022 at 12:00 pm**

**Fern Walk at Saw Mill Brook**

**Leader: Don Lubin**

**Saw Mill Brook Conservation Area**

**Newton Conservators Spring Walk Series - 2022**



This conservation area runs along Saw Mill Brook. We will see woods and swamps and Roxbury puddingstone outcrops, and nearly a dozen ferns and a club-moss. Meet at the parking area off Vine Street near Wayne Road. Wear long pants and bug spray. Bring any native fern you would like Don to identify. Trip Leader: Don Lubin (617-964-4488) (don@NEfern.info)



Photo: Ken Mallory

**Wednesday, June 15, 2022 7:00 pm - 8:15 pm**

**Newton's Street Trees: Past, Present, and Future**

**Presenter: Marc Welch, City Forester**

**Newton Conservators Spring Webinar Series - 2022**

**Sign up: <https://bit.ly/3s3DCsv>**



Trees growing along the roadways of Newton have been a part of the fabric of the community for over 100 years. How did these trees get here? What is their importance? What can we expect in the future? The City's street trees provide incredible benefits to the public but also require thoughtful care, planning and perspective. We will look at how the trees and their care have evolved over the years. We also will discuss ways to ensure these trees remain assets to the community.



PHOTO: MARC WELCH

*Street Trees in Newton*

Marc Welch is the City Forester and Deputy Commissioner of the Newton Parks, Recreation & Culture Department. He is a Massachusetts Qualified Tree Warden and Massachusetts Certified Arborist. Marc is entering his twentieth year managing the City's trees. Co-sponsored by The Newton Tree Conservancy.

**Tuesday, June 21st, 7-8 PM**  
**Charles River Flood Model Priority Project**  
**Solution**  
**Charles River Watershed Association**  
**Virtual Event**



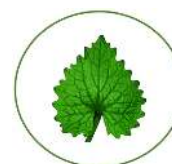
Join CRWA to discuss flooding in the Charles River watershed and provide input on a creative solution Charles River Watershed Association (CRWA) and your community are exploring to manage local and regional flooding impacts! This meeting will focus on a flood storage option at Albemarle Field in Newton. Join them to learn about a solution for climate change in Newton!



Registration link:

<https://us02web.zoom.us/meeting/register/tZMsdOCgqTljGNS9hGRx5dGihtGqBF-0zMwh> or [bit.ly/NewtonCRFM](http://bit.ly/NewtonCRFM)

**Saturday, June 18, 2022 9:30 am - 12:00 pm**  
**Knotweed Pull at Dolan Pond**  
**Dolan Pond Conservation Area**  
**near 76 Webster Park, Newton, MA**



<https://newtonconservators.org/events/knotweed-pull-at-dolan-pond-4/>

We will work to control knotweed along the path through the Conservators' conservation restriction area of this gem of a pocket park. Bring shovels and clippers and wear long pants and garden gloves. Leaders are Ted Kuklinski, 617-332-7753 and Katherine Howard 617-721-2571.



**Saturday, July 9, 2022 1:00 pm - 3:00 pm**  
**Cold Spring Park Invasives Pull**  
**Cold Spring Park Beacon Street trailhead**  
**1200 Beacon Street, Waban, MA**



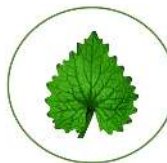
<https://newtonconservators.org/events/cold-spring-park-invasives-pull-12/>

Cold Spring Park is being invaded by garlic mustard, knotweed, buckthorn, and other species. We will keep the Cochituate Aqueduct walk under control after previous years' pulls, and work on the meadow and Beacon Street parking lot areas. Wear long pants and garden gloves. The invasive plant material will be properly disposed of as trash, not as yard waste. Leaders are Alan Noguee, 617-

564-1664 and Katherine Howard, 617-721-2571.

**Sunday, July 10, 2022 1:00 pm - 3:00 pm**  
**Crystal Lake/Centre Street Invasives Pull**  
**Centre St near 1429 Centre St, Newton MA**

<https://newtonconservators.org/events/crystal-lake-centre-street-invasives-pull-2/>

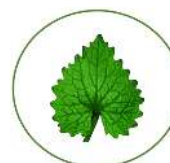


We will work at the city's small pocket park along Centre St just outside of Newton Center, next to the house at 1429 Centre St. Wear long pants and garden gloves. Some tools and gloves are available but bring your own digging tool and loppers if you can. Leader is Katherine Howard, 617 721 2571.



**Saturday, July 16, 2022 9:30 am - 12:00 pm**  
**Quinobequin/Hemlock Gorge Invasives Pull**  
**Hemlock Gorge Ellis Street lot**  
**2 Ellis Street, Newton, MA**

<https://newtonconservators.org/events/quinobequin-hemlock-gorge-invasives-pull-8/>

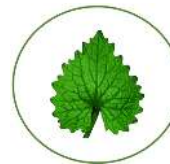


We will control garlic mustard, knotweed, and black swallow-wort infestations inside beautiful Hemlock Gorge, and the adjoining walking trail along the Charles River at Quinobequin Rd. Help keep the invaders out of these beautiful parks! Wear long pants and garden gloves. Trash bags will be provided; the City will properly dispose as trash, not as yard waste. Leaders are Jerry Reilly and Katherine Howard, 617-721-2571.



**Sunday, July 17, 2022 1:00 pm - 3:00 pm**  
**Quinobequin/Hemlock Gorge Invasives Pull**  
**Hemlock Gorge Ellis Street lot**  
**2 Ellis Street, Newton, MA**

<https://newtonconservators.org/events/quinobequin-hemlock-gorge-invasives-pull-9/>



We will control garlic mustard, knotweed, and black swallow-wort infestations inside beautiful Hemlock Gorge, and the adjoining walking trail along the Charles River at Quinobequin Rd. Help keep the invaders out of these beautiful parks! Wear long pants and garden gloves. Trash bags will be provided; the City will properly dispose as trash, not as yard waste. Leaders are Jerry Reilly and Katherine Howard, 617-721-2571.



## Videos

### Jumping Worms in Field and Forest

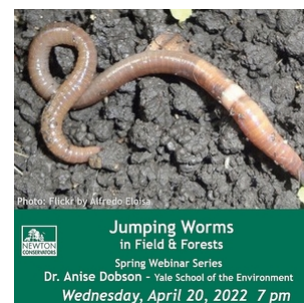
Dr. Annise Dobson, Yale School of the Environment  
Newton Conservators Spring Webinar Series - 2022

Presented on Wednesday, April 20, 2022

<https://youtu.be/m4gBYXtEUJY>



Nearly all earthworms in New England are introduced from Europe and Asia. While some species of earthworms benefit some species of plants, invasive earthworms have caused major shifts in North American plant communities. Jumping worms alter the structure and chemistry of the soil dramatically, leaving a grainy soil full of worm excrement (castings), and they can damage lawns, landscapes and forest habitat. This talk will presented the impacts and history of earthworms (and jumping worms in particular) and provided information on identification of jumping worms. It was presented by Dr. Annise Dobson, a postdoctoral researcher at the Yale School of the Environment. Currently, she is working to identify the movement of jumping worms through New York City and assessing their impacts on urban plant communities. Check out this and other of our webinars on our YouTube channel at [www.tinyurl.com/videoconservators](http://www.tinyurl.com/videoconservators)



### Landscaping & Gardening for Wildlife

Presented by Tia Pinney, Teacher Naturalist, MassAudubon

A webinar presented by Wellesly Conservation Land Trust

Available for viewing ONLY through June 10, 2022



Learn how you can support local species by utilizing wildlife-friendly gardening practices in your home, business, and community settings. Simple, easy actions like keeping fall leaves on the ground could have huge effects, and bring in more butterflies, come spring! Learn about what to do, and not do, in your yard, garden, or even container, to support nearby birds, frogs, pollinators, and more in a sustainable fashion.

<https://www.youtube.com/watch?v=f07zLlZNVl>

## News

### State Agricultural Officials Ask Public to be on Alert for Hatching of Invasive Spotted Lanternfly Eggs

*Potential for egg masses to have been accidentally brought in on nursery stock imported from other states!*

The Massachusetts Department of Agricultural Resources (MDAR) is asking the public to keep an eye out for the invasive pest known as spotted lanternfly



(*Lycorma delicatula*) during the spring planting season due to the risk of egg masses being accidentally brought in on shipments of trees imported from other states. MDAR recently received reports that nursery stock from SLF-infested areas may have been sent to Massachusetts growers. Due to this, anyone who has recently purchased trees or shrubs or had them planted on their property, particularly maple or crabapple trees, is being asked to inspect the trunk and branches to ensure there are no SLF egg masses or any hitchhiking nymphs, and to report any finds to MDAR. Landscapers and plant nurseries are also being reminded to stay on the lookout for this pest.

“Spotted lanternfly is a tricky pest to deal with, because it can be so challenging to detect before it becomes established,” said MDAR Commissioner John Lebeaux. “With the potential impact of this pest on grape and hop growers, as well as pick-your-own orchards and other parts of the agritourism industry, we are asking anyone with newly planted trees to check them for signs of SLF and to report it if they find it, so that we can limit the spread of this pest in our state.”

In addition to the agricultural impacts it causes, spotted lanternfly has the potential to negatively impact outdoor activities due to the swarming behavior of this pest when the adults appear in the late summer. SLF egg masses are about an inch and a half long, and are flat and gray in color, making them difficult to detect, especially on tree bark. Because of this, any SLF may not be noticed until the nymphs hatch at the end of May or the start of June. The public is asked to look for small black insects marked with white dots. If grapes or tree-of-heaven are in the area, they will migrate to those plants.



Spotted lanternfly is a sap-feeding insect that has caused significant impacts to vineyards, orchards, and other agricultural commodities in states where it has become established. SLF not only harms grapevines, maples, hops, blueberries, and over 100 other host plants, but has been observed to impact outdoor recreation in other states where populations are high and adult lanternflies swarm in large numbers during mating season.

Find more info or report sightings at

<https://massnrc.org/pests/pestFAQsheets/spottedlanternfly.html>

**NOTE:** You can learn more about this pest in our Newton Conservators Webinar, “Spotted Lanternfly in Massachusetts and the US” found on our Newton Conservators YouTube Channel at <https://youtu.be/CWAn0DSHNSl>

## HELP WANTED!

Newton Conservators is an all-volunteer organization and we accomplish a great deal with the assistance of individual volunteers. Volunteering with us can take many forms. You are probably familiar with our extensive schedule of Invasive Removal projects for instance under Katherine Howard's guidance (see our schedule above for those events.) However, we have many other needs throughout the year. Perhaps you are a whiz at social media or video production or might like something physical like trail maintenance? Or perhaps you would like talking to folks at some of our Community Outreach events (e.g. Village Days, etc.) , or writing or editing articles for our newsletter or other publications, or leading a walk or online webinar (or helping arrange them). We would love to hear from you. Visit <https://newtonconservators.org/volunteer/>

### Booth Personnel for Local Village Days

We have a busy upcoming schedule of various community events (e.g. various village days). We have a Newton Conservators tent, tables, and information to let folks know what we do and how they could help preserve and protect Newton's Open Space. We are looking for folks who are good at engaging with people to help staff our booth for a few hours at these events (usually on a Saturday or Sunday). If this appeals to you, please contact board member Margaret Doris (medoris@aol.com) who is coordinating our efforts and upcoming events.

### Artful Piano Pals Needed Over the Summer

In conjunction with care of the City Hall Pollinator Garden, a small group from the Newton Conservators and Pollinator Group so far has volunteered to help be Piano Pals for an "artful piano" installed outside at City Hall. Particularly if you live near City Hall, would you consider joining this group



take a week long shift on one or more weeks over the summer to watch for rain and cover the piano with a tarp. It would be a great service and you can play piano all you want! Contact Ted Kuklinski, [tkuklinski@aol.com](mailto:tkuklinski@aol.com), if you are interested in participating and we will get back to you to find out weeks you may be available. Based on response, we'll set up a schedule so as not to burden any one person. We hope to possibly schedule a musical nature event at this particular piano some time as well.

## Newton Conservators Newsletter

Our Spring 2022 Newsletter is now available at <https://newtonconservators.org/newsletters>.

## The Summer 2022 Newsletter will be coming soon!



**NEWTON  
CONSERVATORS**

SPRING ISSUE

# NEWSLETTER

*Newton's land trust working to preserve open space since 1961*

NEWTONCONSERVATORS.ORG • SPRING 2022

---

**2022 Officers and Directors**

Chris Hepburn,  
Co-President

William Hagar,  
Co-President

Alice Ingerson,  
Vice President

Michael Clarke,  
Secretary

Katherine Howard,  
Treasurer

Ted Kuklinski,  
Past President

David Backer

Peter Barrer

Barbara Bates

Dan Brady

Bonnie Carter

Samantha Carlin

Margaret Doris

Henry Finch

Maurice Gilmore

Daniel Green

Ken Mallory

George Mansfield

Nyssa Patten

Larry Smith

Beth Wilkinson

**Advisors**

AnnaMaria Abernathy

Margaret Albright

Lisle Baker

John Bliss

Lee Breckenridge

Lolur Burdick

Lucy Caldwell-Stair

Michael Callara

Ann Dorfman

Bart Hague

Alison Leary

William Leitch

Dan Lubin

Brooks Mathewson

Eric Olson

Richard Primack

Eric Reentsiema

Jon Regasin

Patricia Robinson

Jane Sender

William Shaevel

Diane Tiltonson

Willis Wang

Bruce Wenning

## Rain Gardens are Beautiful and Beneficial

*By Maria Rose, Environmental Engineer at City of Newton*

**R**ain gardens are stormwater management systems designed to receive, infiltrate, and cleanse concentrated flows of stormwater. They collect polluted runoff from impervious surfaces (e.g., roofs, driveways, parking lots, and streets), allowing it to soak into the ground, where the plants, soil, and beneficial bugs filter out pollutants that are picked up by stormwater as it flows across the land. What pollutants you may ask? Many, including phosphorus, bacteria, and oil to name just a few!

It has been shown that the degradation of our streams and rivers increases with our built environment. Many studies have shown that stream ecosystems and water quality become degraded as impervious surfaces increase. When more than 10% of the land within a watershed is covered with impervious surfaces, streams are often impaired. When impervious cover exceeds 25%, severe habitat and water quality impairment tends to result (source: *Impacts of Impervious Cover on Aquatic Systems*, Center for Watershed Protection, March 2003). Installing rain gardens helps to offset the impacts of development.

There are several rain gardens here in the City of Newton. You can find them at Zervas Elementary School, Oak Hill Middle School, and soon near Crystal Lake.



PHOTO: GENE RAYMOND, RAYMOND DESIGN ASSOCIATES

*Oak Hill Middle School roof runoff is piped to the rain garden, where the water slowly seeps into the ground. During large storm events, overflow is directed to the domed open grate.*

Rain gardens planted with shrubs, grasses, and perennial plants can be a cost-effective and beautiful way to reduce runoff, improve the water quality in lakes, ponds, and streams, replenish aquifers and minimize soil erosion. Rain gardens also provide food and shelter for butterflies, songbirds, and other wildlife.

More complex rain gardens with drainage pipes and amended soils are often referred to as "bioretention." Both rain gardens and bioretention systems are types of Green Stormwater Infrastructure or more simply, **Green Infrastructure**. Green Infrastructure is the intentional use of plants, soil, and hydrologic processes to treat runoff in a way that mimics natural

*Continued on page 2*

The [Spring 2022 issue](#) contains the following interesting articles and features:

- [Rain Gardens are Beautiful and Beneficial](#)
- [Forests Changing Slowly and Quickly in Webster Woods](#)
- [Enjoy Nature...with webinars from Newton Conservators](#)
- [Invasive Team Update](#)
- [Spring 2022 Walks](#)
- [New Membership System: Little Green Light](#)

**PLEASE JOIN OR RENEW YOUR NEWTON CONSERVATORS MEMBERSHIP**



We would be very grateful for your continued support by joining Newton Conservators or renewing your membership. Perhaps, consider renewing at a higher level, adding an extra donation, or purchasing a gift membership for someone else who is passionate about open space.

You can renew or join the Newton Conservators online at <https://newtonconservators.org/renewal-2020/>. A link to our annual members' renewal letter outlining last year's activities can also be found at the above link.

Donations may be made at our securely via our website at <https://newtonconservators.org/ways-to-give/>. As a 501(c)(3) non-profit, we also accept donations for a number of affiliated local open space groups including Friends of Webster Woods, Friends of Houghton Garden, the Riverside Trails Working Group, Trails Fund, and others. As part of the donation process, you can specify specific funds. Thanks so much!

*Mission: The Newton Conservators promotes the protection and preservation of natural areas, including parks, playgrounds, forests and streams, which are open or may be converted to open space for the enjoyment and benefit of the people of Newton. It further aims to disseminate information about these and other environmental matters. A primary goal is to foster the acquisition of land, buildings and other facilities to be used for the encouragement of scientific, educational, recreational, literary and other public pursuits that will promote good citizenship and the general welfare of the people of our community.*

- E-Bulletin Editor & President Ted Kuklinski, Newton Conservators ([ebulletin@newtonconservators.org](mailto:ebulletin@newtonconservators.org))

[Save](#)

---

[Click to view this email in a browser](#)

5/28/22, 6:35 PM

E-Bulletin May 25, 2022 - Doug Tallamy Talk on Wednesday!

If you no longer wish to receive these emails, please reply to this message with "Unsubscribe" in the subject line or simply click on the following link:  
[Unsubscribe](#)

[Click here](#) to forward this email to a friend

Newton Conservators  
PO Box 590011  
Newton, Massachusetts 02459  
US

[Read](#) the VerticalResponse marketing policy.

