

Enjoy Nature... with Webinars from Newton Conservators

Join us for our **Spring Webinar Series** online from April through June.

Each program will begin at 7 pm and last approximately one hour. You may register for the programs using the links below or by going to the event listing at newtonconservators.org. You will receive an email confirmation after you have registered.



PHOTO: CHRIS HEPBURN
Rock cliff in Newton-Webster Conservation Area

Wednesday, April 19 ... The Stories the Rocks Tell: An Introduction to the Geological History of Newton and Eastern Massachusetts

Newton's rocks are like ancient scrolls for those who can interpret them, telling fascinating stories of continental collisions, high mountains forming, explosive volcanic eruptions, and evidence of ancient glaciers. Chris Hepburn will tell us a bit about how to read the geological record of the rocks in and around Newton and their exciting history, including their journey, via plate tectonic movements, from where they originated near the South Pole almost 600 million years ago.

Chris has a Ph.D. in Geology from Harvard and is Professor Emeritus at Boston College. He has spent over 50 years studying the rocks of New England and the northern Appalachians and has authored and co-authored dozens of articles on them in scientific journals. He has led numerous geological field excursions for professionals, students, and the Conservators to the outcrops in Newton. Chris is currently co-president of the Conservators.

Sign up: <https://bit.ly/3Zc7qC9>



PHOTO: MAYA DUTTA
Danehy Park Miyawaki Forest planted by Biodiversity for a Livable Climate

Wednesday, May 10 ... Rewilding our Communities for Climate Resilience

What holds some 500 species, sequesters 500 pounds of CO₂/year, is 10°F cooler than its surroundings, soaks up lots of rainwater, and is created by children and their elders in spaces no bigger than a tennis court? A “mini-forest” planted using the Miyawaki Method, of course! After a couple of years of as-needed weeding and watering, these nascent forests form a canopy and — like any other healthy ecosystem — become self-sufficient. We'll discuss what a mini-forest is, what it can do for your neighborhood, how to plant one, and why people all over the world are organizing their communities to plant mini-forests in the small spaces around where they live and work.

Hannah Lewis is the author of *Mini-Forest Revolution: Using the Miyawaki Method to Rapidly Rewild the World*, published in June 2022 by Chelsea Green; a French translation of the book was released in January 2023 by Editions Eyrolles in France. Hannah has an MS in Sustainable Agriculture and Sociology from Iowa State University and a BA in Environmental Studies from Middlebury College. She lives in Minneapolis, where she works for the non-profit Renewing the Countryside to build sustainable local and regional food systems and plant mini-forests.

Sign up: <https://bit.ly/3KyvfAk>

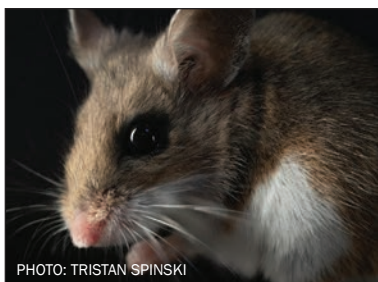


PHOTO: TRISTAN SPINSKI
Deer mouse from a study site at the University of Maine

Wednesday, June 7 ... How Small Mammal Personalities May Shape Forests Under Changing Climates

Plant species are expected to respond to warming temperatures and changes in precipitation in the face of climate change by shifting ranges to higher latitudes and elevations. Oaks are one such species, but unlike wind-dispersed species, will depend upon animals (such as squirrels, mice, and voles) to disperse their large seeds into their new habitable range. Many factors can influence this plant-animal relationship, including individual behavior. Ivy Yen will share her research, which investigates how the small mammal personalities (whether they are shy or bold) differentially select and cache seeds to influence future forest regeneration. She will explain that it takes a range of personalities to maintain forests.

Ivy Yen is a doctoral student in the Department of Wildlife, Fisheries, and Conservation Biology at the University of Maine in the lab of wildlife ecologist Alessio Mortelliti, who is based at the University of Trieste. Her research focuses on the consequences of individual behavioral variation while using small mammals as a model system.

Sign up: <https://bit.ly/3KsFEx9>



PHOTO: HEATHER MCCARGO

Fritillary on swamp milkweed

Thursday, June 15 ... Gardening for Habitat

Gardens are habitats, but the degree to which they support local wildlife depends on how we plant and manage them. Our plant choices determine who visits, stays, or passes by as creatures look for food, shelter, to nest and lay eggs. When and how we decide to clean up leaves or cut plants back affects life cycles of salamanders, bees, birds, moths, and butterflies. Emily Baisden will explain how to create habitat in the garden year-round while balancing your workload and garden aesthetics.

Prior to joining Wild Seed Project in 2022, Emily served as Entomologist and Educator at the Coastal Maine Botanical Gardens. She has an extensive background in native horticulture and environmental education, and focuses largely on using native plants to support food webs and biodiversity. She holds a BS in Environmental Science from the University of New England and an MS in Entomology from the University of Delaware. She lives in Brunswick, Maine, where she spends most of her time adventuring with her partner and their dog, and establishing wildlife habitat in her yard.

Sign up: <https://bit.ly/3Zfnao5>

Save the Date! — Newton Conservators' First-Ever Outdoor Annual Dinner Meeting Wednesday May 24, 2023

We will hold our Annual Meeting at the Mount Ida Campus of UMass Amherst. We will meet under a tent for a buffet dinner, a short business meeting with elections and awards, and a keynote speaker. Access starts at 5 PM.



Norman Smith preparing to release a snowy owl while children inspect the owl.

Our speaker this year is Norman Smith, Raptor Specialist from Mass Audubon. Mr. Smith will present his work (which started in 1981) observing, capturing, banding, and relocating Snowy Owls at Logan International Airport and how this project developed in an unusual way to include research on Saw-whet Owls. His slides, sense of humor, and depth of knowledge are remarkable.

Save the Date! — NewtonSERVES is Sunday May 7.

We will host 4 events: Nahanton Park Trail Maintenance, Cold Spring Park Invasives, Dolan Pond Invasives, and Houghton Garden Invasives. Registration starts March 15 at:

<https://newtonma.gov/government/parks-recreation-culture/newton-serves>