

# Newton Pollinator Garden Tour

**Sunday, September 17th  
1 PM to 4 PM**

**Postponed from Sunday, September 10, due to rain!**

Join gardening enthusiasts on a FREE tour of public and private pollinator gardens in Newton "the Garden City".

1 to 3 pm - North Tour: Wellington Park (Kilburn Rd, West Newton) & nearby gardens

2 to 4 pm - South Tour: City Hall Pollinator Garden (City Hall Drive, Newton Centre)

2 to 4 pm - South Tour: Cold Spring Park (Beacon Street, Newton)

**Register for map and detailed planting lists:**

<https://newtonconservators.org/events/newton-pollinator-garden-tour/>

Event  
Sponsors  
Include



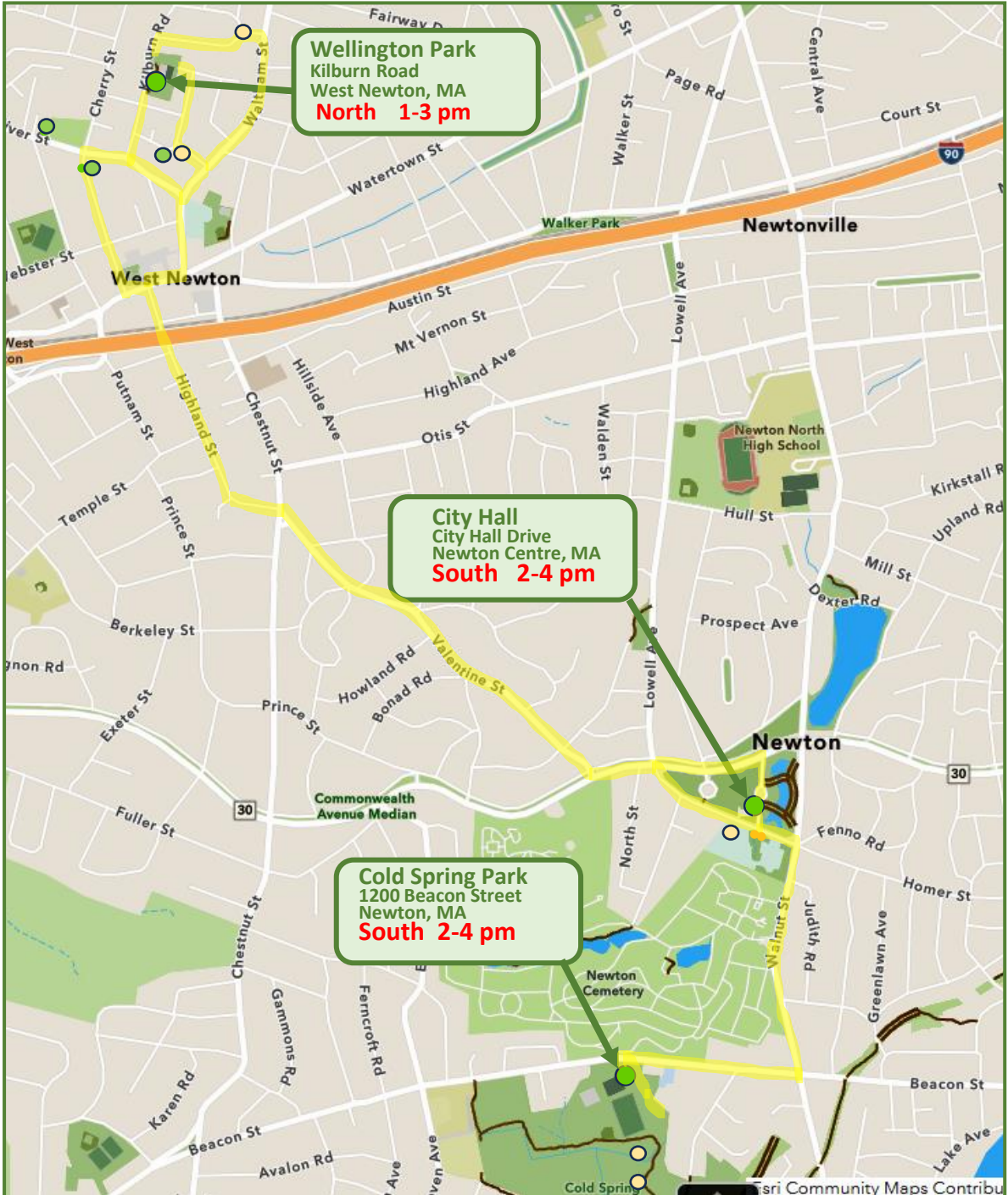
Thanks to our sponsors for supporting this inaugural 2023 Newton Pollinator Garden Tour:

- [Newton Community Pollinator Project](#)
- [Newton Conservators](#)
- [Newton Parks Recreation and Culture Department](#)
- [Green Newton](#)
- [Friends of Cold Spring Park](#)
- [Friends of Wellington Park](#)
- [Mystic Charles Pollinator Pathways Group.](#)

# Newton Pollinator Garden Tour

September 17, 2023

## Garden Area Map – Main Hosted Sites



Follow the recommended yellow routes to travel between the North and South garden sites

# Wellington Park (North Tour) Newton Pollinator Tour Gardens



HOSTED

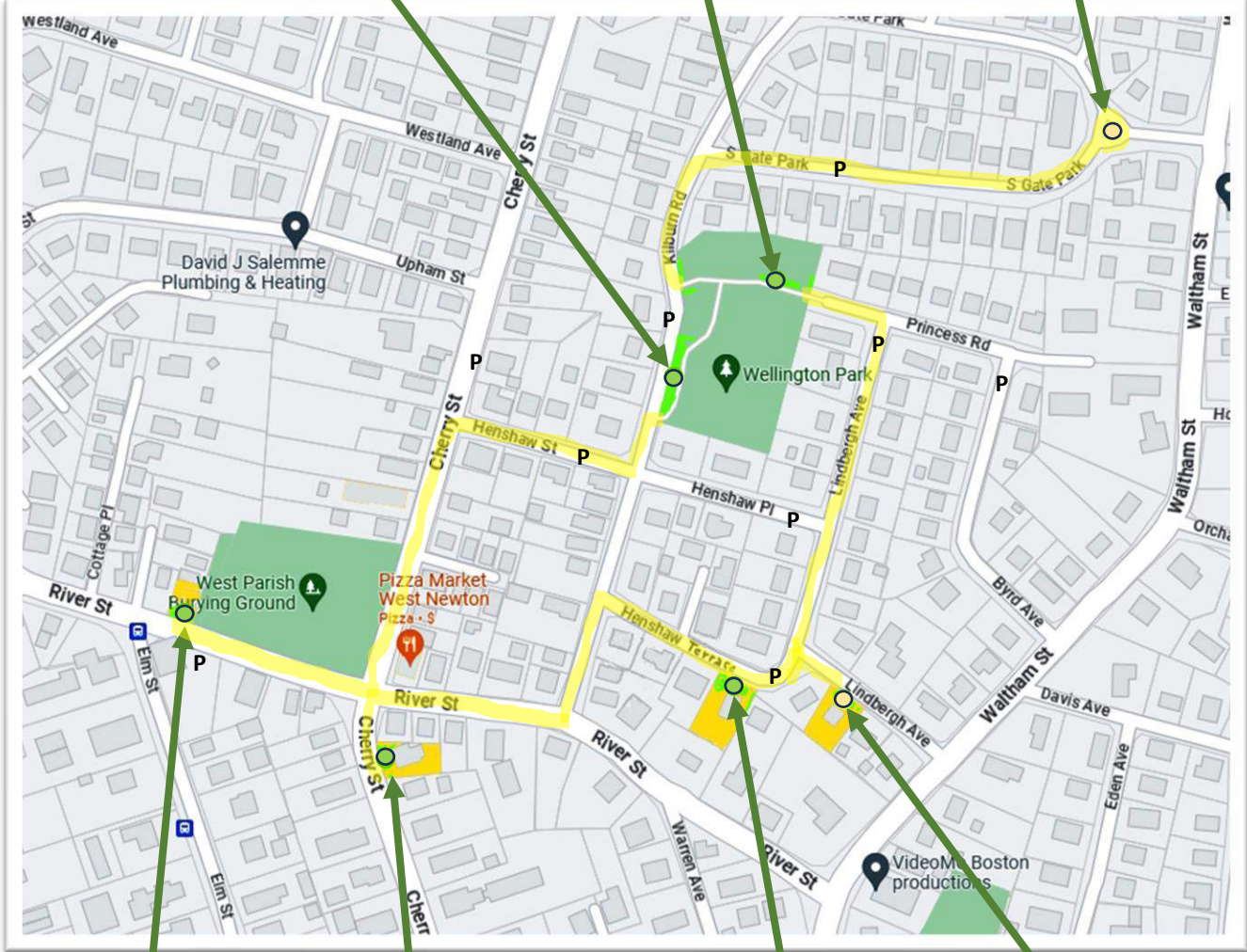
NON-HOSTED



Wellington Park  
Main Bed

Wellington Park  
Tennis Court Bed

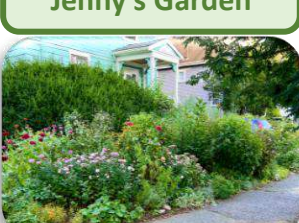
Northgate / Southgate  
Park Island



101 River Street  
Galli Family Garden



370 Cherry Street  
Jenny's Garden



24 Henshaw Terrace  
Henshaw Haven



18 Lindbergh Avenue  
Meg & Peter's Garden



# Wellington Park, West Newton, MA

## Main Bed (p1)



Wellington Park - Main Bed			
Kilburn Road, W Newton, MA			
September 2023			
Common Name	Cultivar'	Genus and Species	Native status
ALLIUM	Chinese chives	<i>Allium tuberosum</i>	non-native
AMSONIA	Blue Ice	<i>Amsonia tabernaemontana</i>	Southeast US Native
ANISE HYSSOP	Agastache	<i>Agastache foeniculum</i>	Mid-west US Native
ARTEMISIA	Silver Queen' possible	<i>Artemisia ludoviciana</i>	Western US native
ASTER		<i>New England Aster</i>	Northeast US Native*
ASTILBE		<i>Astilbe</i>	non-native
AZALEA			non-native
BAPTISIA		<i>Baptisia australis</i>	Eastern US native
BEARDED IRIS			non-native
BEEBALM	Scarlet beebalm	<i>Monarda didyma</i>	Eastern US native*
BLACK-EYED SUSAN	Goldsturm'	<i>Rudbeckia 'Goldsturm'</i>	N American Native
BLACK-EYED SUSAN	Hirta'	<i>Rudbeckia hirta</i>	N American Native*
GAYFEATHER	Blazing Star	<i>Liatris spicata</i>	Eastern US native
BLEEDING HEART		<i>Dicentra spectabilis</i>	non-native
CATMINT		<i>Nepeta</i>	non-native
COLUMBINE	Purple	<i>Aquilegia</i>	non-native
COLUMBINE	Red/yellow	<i>Aquilegia canadensis</i>	Eastern US native*
CONE FLOWER		<i>Echinacea purpurea</i>	Southeast US native
CORAL BELLS		<i>Heuchera</i>	Eastern US native
CORIOPSIS	Zagreb'	<i>Coreopsis verticillata</i>	Southeast US native
DAISY	Shasta	<i>Leucanthemum xsuperbum</i>	non-native
DAYLILY	Stella D'oro'	<i>Hemerocallis</i>	non-native
EUPHORBIA	Snow on Mountain	<i>Euphorbia marginata</i>	US prairy native - annual
EVENING PRIMROSE		<i>Oenothera lamarckiana</i>	Nativish
EVENING PRIMROSE		<i>Oenothera biennis</i>	Eastern US native*
FALSE SUNFLOWER		<i>Heliopsis helianthoides</i>	Eastern US native
GERANIUM		<i>Geranium maculatum</i>	Eastern US native*
GLOBEFLOWER		<i>Trollis</i>	non-native
GOLDENROD	Gray Goldenrod	<i>Solidago nemoralis</i>	Eastern US*
HYACINTH BEAN	Ruby Moon'	<i>Dolichos lablab</i>	non-native - Annual
HYDRANGEA	Lacecap	<i>Serata</i>	non-native
JAPANESE MAPLE		<i>Acer palmatum</i>	non-native
JOE PYE WEED		<i>Eutrochium purpureum</i>	Eastern US native*
LIRIOPE	Creeping Lilyturf'	<i>Liriope spicata</i>	non-native
MAXIMILLIAN'S SUNFLOWER		<i>Helianthus maximillian</i>	Great plains native
MILKWEED	Butterfly Milkweed	<i>Asclepias tuberosa</i>	N American Native*
MILKWEED	Common Milkweed	<i>Asclepias syriaca</i>	N American Native*
MILKWEED	Swamp Milkweed	<i>Asclepias incarnate</i>	N American Native*
OBEDIENT PLANT		<i>Physostegia virginiana</i>	Eastern US native
OREGANO		<i>Origanum vulgare</i>	non-native

# Wellington Park, West Newton, MA

## Main Bed (p2)

PENSTEMON	Huskers Red	<i>Penstemon digitalis 'Huskers'</i>	Eastern US native*
PEONY		<i>paeonia</i>	non-native
PERSICARIA		<i>Persicaria amphexicaulis</i>	non-native
PHLOX	Garden phlox	<i>Phlox paniculata</i>	Eastern US native
PRAIRY CORNFLOWER		<i>Ratibia pinnata</i>	Central US native
ROSE		<i>Rosa</i>	non-native
ROSE OF SHARON		<i>Hibiscus syriacus</i>	non-native
SALVIA		<i>Salvia nemorosa</i>	non-native
SAND CHERRY		<i>Prunus pumila x</i>	hybrid
SEDUM	Autumn Joy	<i>Sedum spectabile</i>	non-native
SEDUM	Creeping		non-native
SIBERIAN IRIS		<i>Iris sibirica</i>	non-native
SPIREA	Bridal wreath spirea	<i>Spiraea prunifolia</i>	non-native
SPIREA	Japanese spirea	<i>Spiraea japonica</i>	non-native
ST JOHN'S WORT	Shrubby St John's-wort	<i>Hypericum prolificum</i>	Eastern US native
VIOLET		<i>Viola sororia</i>	N American Native*
WEIGELIA	Wine and Roses	<i>Weigelia florida</i>	non-native
YELLOW LOOSESTRIFE		<i>Lysimachia punctata</i>	non-native
			* = Massachusetts Native

- Host Ann Dorfman will be onsite for the tour to answer any questions.
- The garden is colorful throughout the season as different flowers bloom and is immensely popular with pollinating insects!
- The main garden area in Wellington is maintained by volunteers of Friends of Wellington Park and supervised mainly by local Ann Dorfman (Master Gardener).
- The Wellington garden has emphasized more native plants over the years.
- This has been a NewtonSERVES site since it's inception.
- This area was first used as a daffodil and tulip garden around 2000 but has vastly transformed from that time.
- The pathway and bench were added later around 2007.
- Other amenities at Wellington Park are the playground, basketball and tennis courts, fields, water fountain, and Little Free Library.



# Wellington Park, West Newton, MA

## Tennis Court Bed

Wellington Park - Tennis court bed				
Kilburn Road, W Newton, MA				
September 2023				
Common Name	Cultivar'	Genus and Species	Native status	Bloomtime
Anise hyssop		Agastache foeniculum	Mid-west US Native	Summer
Aster	New England Aster	Aster novae-angliae	Northeast US Native*	Fall
Beebalm	Scarlet beebalm	Monarda didyma	Eastern US native*	Spring
Beebalm	Wild bergamot	Monarda fistulosa	Eastern US native*	Summer
Black eyed Susan		Rudbeckia hirta	N American Native*	Summer
Blue cardinal flower		Lobelia siphilitica	Eastern US native*	Summer
Butterfly bush		Buddleia davidii	non-native	Summer
Chokeberry	Red Chokeberry	Aronia melanocarpa	Eastern US native*	Spring
Columbine	Common columbine	Aquilegia vulgaris	non-native	Spring
Coneflower		Echinacea purpurea	Southeast US native	Summer
Gay feather		Liatris spicata	Eastern US native	Summer
Goldenrod		Solidago (various)	Native*	Fall
Little Bluestem		Schizachyrium scoparium	US Native*	Summer
Maximillian's sunflower		Helianthus maximillian	Great plains native	Fall
Mexican sunflower		Tithonia rotundifolia	Southern US native	Summer
Milkweed	Butterfly weed	Asclepias tuberosa	N American Native*	Summer
Milkweed	Common milkweed	Asclepias syriaca	N American Native*	Summer
Milkweed	Swamp milkweed	Asclepias incarnata	N American Native*	Summer
Mountain mint		Pycnanthemum muticum	Eastern US native*	Summer
Pokeweed	American pokeweed	Phytolacca americana	Eastern US native*	Fall
Prairie cornflower		Ratibia pinnata	Central US native	Summer
Pussytoes	Field pussytoes	Antennaria neglecta	Northern US native*	Spring
Rose campion		Lychnis coronaria	non-native	Summer
Russian sage		Perovskia	non-native	Summer
Sagebrush	White sagebrush	Artemesia ludoviciana	Western US native	Summer
Sedum	Autumn Joy	Sedum spectabilis	non-native	Fall
Vervain	Purpletop vervain	Verbena bonariensis	non-native	Summer
Violet	Common violet	Viola soraria	N American Native*	Spring
Wild senna		Senna hebecarpa	Eastern US native*	Summer
			*= Massachusetts Native	

- This section of Wellington Park was started within the last 10 years for Monarchs with five Common Milkweed plants.
- This site is an official Monarch Waystation!
- It's a good example of usage of otherwise unused green border space in a park.



# Wellington Park, West Newton, MA

## Northgate / Southgate Park Traffic Island

North/Southgate Park Traffic Island			
Common name	Cultivar	Botanical Name	Native Range
Amsonia	Blue Ice	Amsonia Tabernaemontana 'B	Central/eastern US
Amsonia	Bluestar	Amsonia Tabernaemontana	Central/eastern US
Aster			Eastern US
Black eyed susan	Goldsturm'	Rudbeckia fulgida sullivantii	Eastern US
Black eyed susan	hirta	Rudbeckia hirta	Eastern US
Bleeding heart		Lamprocapnos spectabilis, form	non-native
Carex			non-native
Catmint		Nepeta	non-native
Coneflower		Echinacea purpurea	Southeastern US
Daisy	Shasta	Leucanthemum x superbum	non-native
Day lily	Stella d'oro	Hemerocallis 'Stella d'oro'	non-native
Euphorbia			non-native
Geranium	Bigroot	Geranium macrorrhizum	non-native
Geranium	Cranesbill	Geranium sanguineum	non-native
Goatsbeard		Aruncus dioicus	US Native
Goldenrod	Fireworks	Solidago rugosa 'fireworks'	Eastern US
Knockout roses	Rainbow		non-native
Large flower Tickseed		Coriopsis grandiflora	South/central US
Marigolds			non-native
Salvia		Salvia	non-native
Sedum	Autumn Joy	Sedum spectabile 'Autumn Joy	non-native
Sedum	Creeping		non-native
Siberian Iris			non-native
Snake root	Chocolate	Eupatorium rugosum 'Chocolat	Eastern US
Speedwell		Veronica	non-native
Spirea			non-native
Swamp milkweed		Asclepias incarnata	Eastern US
Sycamore Tree			Eastern US
Wandflower		Gaura lindheimeri	South/central US

- This traffic island garden is maintained by volunteers from Friends of Wellington Park.
- Parking is available on neighboring streets.
- This site is *not hosted* during the tour but worthwhile visiting as an example of beautification of a small public space by driving or walking.



# 16 Lindbergh Avenue, West Newton, MA

## Meg's Garden

<input type="radio"/> Ajuga - bugleweed	<input type="radio"/> Joe Pye weed
<input type="radio"/> Asian lily	<input type="radio"/> Juniper - blue star
<input type="radio"/> Black eyed Susan	<input type="radio"/> Lavender
<input type="radio"/> Boxwood	<input type="radio"/> Ligularia
<input type="radio"/> Bronze fennel	<input type="radio"/> Lily of the valley
<input type="radio"/> Butterfly bush	<input type="radio"/> Lupine
<input type="radio"/> Butterfly weed - Asclepius tuberosa	<input type="radio"/> May Apple
<input type="radio"/> Clematis panniculata - sweet autumn	<input type="radio"/> Pachysandra
<input type="radio"/> Coral bells	<input type="radio"/> Peonies
<input type="radio"/> Coreopsis	<input type="radio"/> Phlox
<input type="radio"/> Day Lily - several varieties	<input type="radio"/> Pulmonaria
<input type="radio"/> Echinacea	<input type="radio"/> Rhododendron
<input type="radio"/> Geranium	<input type="radio"/> Rose
<input type="radio"/> Hakone - "aureola"	<input type="radio"/> Salvia
<input type="radio"/> Hakone - Japanese first grass	<input type="radio"/> Sedum
<input type="radio"/> Helleborus	<input type="radio"/> Sedum - autumn joy
<input type="radio"/> Hosta	<input type="radio"/> Spiderwort
<input type="radio"/> Iris	<input type="radio"/> Spirea
<input type="radio"/> Iris - Japanese	<input type="radio"/> Sweet woodruff

- This front yard and sidewalk berm garden attracts a lot of pollinators.
- This site is not hosted during the tour but worthwhile visiting as an example what can be done with a front yard instead of a grass lawn.
- Parking is available on neighboring streets







# 24 Henshaw Terrace West Newton, MA

## Henshaw Haven

- \* This site is an official Monarch Waystation and has over 200 milkweed plants.
- \* Supports a large variety of pollinating insects (see poster on-site from iNaturalist sightings).
- \* This is a hosted site. Parking is available on-street or you can walk from Wellington Park .
- \* Definitely not a formal garden and requires very little maintenance.



**American Asters**  
Genus *Symphoricarum*



**Annual Fleabane**  
*Erigeron annuus*



**Beebalsms**  
Genus *Monarda*



**Blue-flag Iris**  
*Iris versicolor*



**Blue-eyed Grasses**  
Genus *Stayninchium*



**Buttercups**  
Genus *Ranunculus*



**Butterfly Bush**  
*Buddleja davidii*



**Butterfly Milkweed**  
*Asclepias tuberosa*



**Great Blue Lobelia**  
*Lobelia siphilitica*



**Common Dandelion**  
*Taraxacum officinale*



**Common Hawkweed**  
*Hieracium lichenellii*



**Common Milkweed**  
*Asclepias syriaca*



**Common Star-of-Bethlehem**  
*Ornithogalum umbellatum*



**Common Wrinkle-leaved Goldenrod**  
*Solidago rugos*



**Coreopsis**  
Genus *Coreopsis*



**Cow Vetch**  
*Vicia cracca*



**Crepe Myrtle**  
*Lagerstroemia indica*



**Eastern Cat-Mint**  
*Nepeta racemosac*



**False Sunflower**  
*Helipopsis hellanthoides*



**Flowering Dogwood**  
*Cornus florida*



**Steeplebush**  
*Spiraea tomentosa*



**Oxeyes**  
Genus *Helipopsis*



**Peony**  
*Paeonia lactiflora*



**Phloxes**  
Genus *Phlox*



**Purple Coneflower**  
*Echinacea purpurea*



**Purple Milkweed**  
*Asclepias purpurascens*



**Rabbit Foot Clover**  
*Trifolium arvense*



**Red Clover**  
*Trifolium pratense*



**Swamp Milkweed**  
*Asclepias incarnata*



**Sweet Mock Orange**  
*Philadelphus coronarius*



**Tiger Lily**  
*Lilium lancifolium*



**Lupine**  
Genus *Lupinus*



**Hosta**  
Genus *Hosta*



**Hibiscus**  
Genus *Hibiscus*



**Daffodils**  
Genus *Narcissus*

# 270 Cherry Street, West Newton, MA

## *Jenny's Garden*

Flowers	Notes
New England Aster	
Tall White Aster	towering - ready to bloom
False Aster	volunteer and profusive
Wrinkle Leaf Goldenrod	
Blue Stem Godenrod	
Blue Mist Flower	pretty - low growing 1-2 ft with pretty blue flowers
Blue Sage	tall
Monarda - Wild Bergamont	grown from seed - past flowering but tall and light purple
Monarda - Red	
Purple Coneflower	
Butterfly Milkweed	orange
Swamp Milkweed	pink flowers, narrow leaves
Common Milkweed	
False Sunflower	
Black-eyed Susan	
Buttonwort	volunteer - low growing, tiny white flowers
Marigolds	French- brocade mix and Starfire
Zinnias	Benarys giant deep red, cut and come again, Fruity beauty

- This front yard and sidewalk berm garden attracts a lot of pollinators.
- This site is hosted by its creator who can answer your questions.
- This garden is a wonderful example of replacing grass with useful pollinator plants and even includes a water feature.
- Better to walk to this site on the tour or park in the next block north on Cherry Street or across from 101 River St.



# 101 River Street, West Newton, MA

## *The Galli Family Garden*

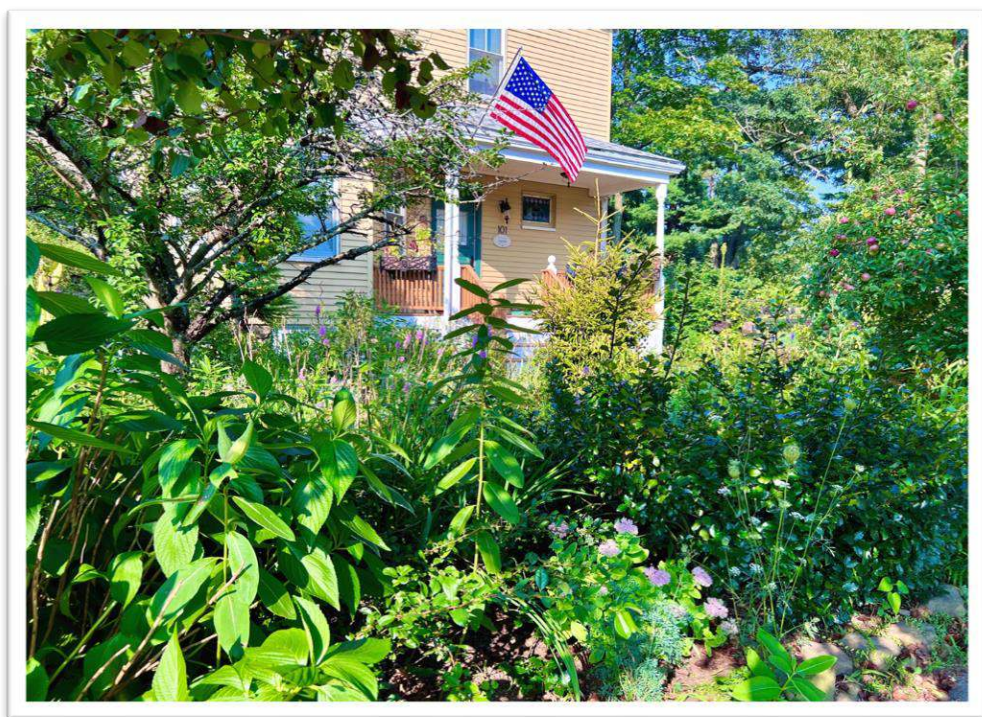
common name	botanical name	bloom color	flowering time of year
Common milkweed	<i>Asclepias syriaca</i>	mauve/white/lavender	early-to-mid-summer
Swamp milkweed	<i>Asclepias incarnata</i>	pink	early summer
Butterfly weed	<i>Asclepias tuberosa</i>	orange	early-to-mid-summer
Sedum Autumn Joy	<i>Hylotelephium 'Autumn Joy.'</i>	pink / purple	late summer to fall
False Dragonhead / Obedient Plant	<i>Physostegia virginiana</i>	lavender	late summer to fall
New England Aster	<i>Symphotrichum novae-angliae</i>	lavender/purple/yellow center	fall
Catnip	<i>Nepeta cataria</i>	lavender	mid-to-late spring
Dwarf red McIntosh tree	<i>Malus domestica 'McIntosh'</i>	white / pink	early-to-mid-spring
Garden sorrel	<i>Rumex acetosa</i>	green/yellow	spring through summer
Purple Coneflower	<i>Echinacea Purpurea</i>	purple	late spring to-mid-summer
White Sage, Wormwood, Mugwort, Ghost Plant	<i>Artemisia Valerie Finnis</i>	light green/yellow/white	mid-summer through fall
Peony	<i>Paeonia</i>	deep magenta	late spring
Bugle weed	<i>ajuga</i>	purple	mid-spring
Phlox	<i>Phlox Paniculata 'Spring Delight'</i>	lavender/pink	mid-to-late summer
Evening primrose	<i>Oenothera biennis</i>	yellow	late-spring
Lavender	<i>Lavandula</i>	purple	early-to-mid summer
Creeping phlox	<i>Phlox stolonifera</i>	purple	mid-spring
Oregano	<i>Origanum vulgare</i>	white	late spring to late summer
Gooseneck loosertrife	<i>Lysimachia clethroides</i>	white	mid-to-late summer
Shasta daisy	<i>Leucanthemum × superbum</i>	white with yellow center	early-to-mid-summer

This front yard garden attracts a lot of pollinators.

There is a parking lot directly across the street for short term parking.

The Galli Family will be on hand to show the garden.

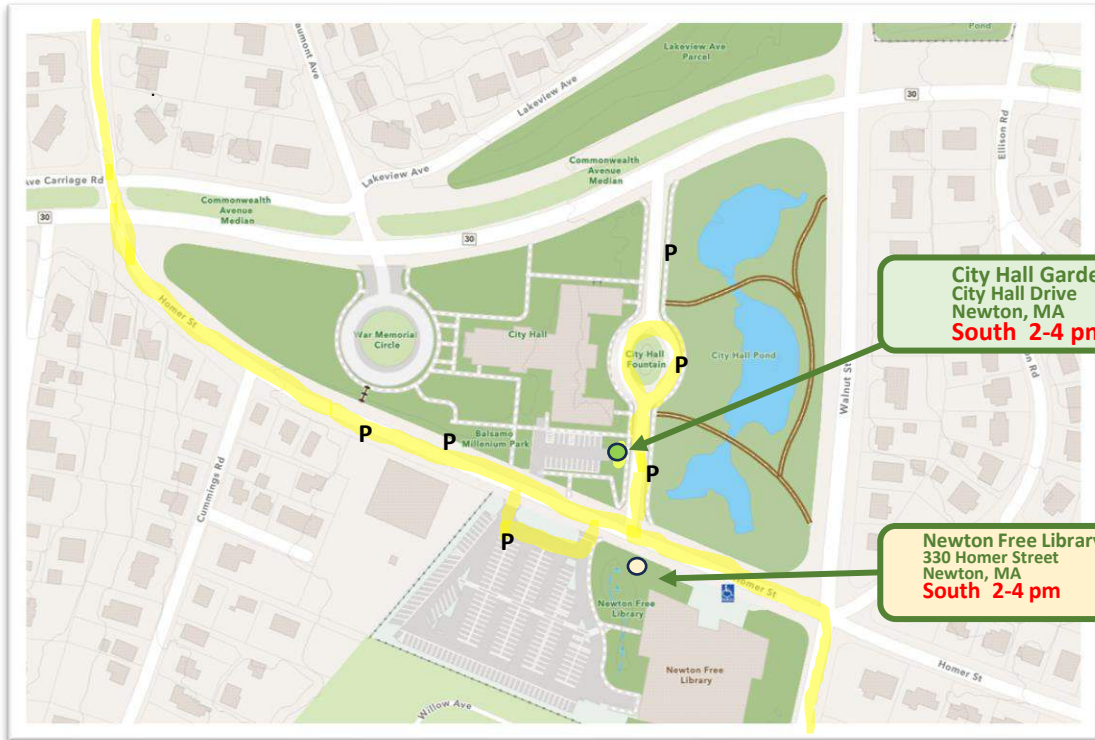
It features lots o milkweed, especially Butterfly Milkweed and even an apple tree.



# City Hall Pollinator Garden

## Newton Pollinator Garden Tour

- \* A wonderful native plant demonstration garden installed by Beth Wilkinson & Mark Feldhusen
- \* Note: there may be some unexpected construction work on adjacent ADA path to City Hall Garden
- \* Lots of parking around City Hall or at the Library
- \* Check out the extensive Pollinator Garden across Homer Street outside the Newton Free Library



## Newton City Hall Pollinator Garden



### City Hall Demonstration Pollinator Garden

The demo garden, established in 2021, provides food and habitat for pollinators throughout our growing seasons.

Learn more about the importance of native pollinators, choosing plants for your own garden, and more by scanning this code.



## Native Pollinator Plants in the City Hall Garden

### Latin Name

### Common Name

#### Shrubs (in bloom order)

<i>Salix discolor</i>	Pussy willow
<i>Swida sericea</i>	Red-twig dogwood
<i>Aronia arbutifolia</i>	Red chokeberry
<i>Clethra alnifolia</i>	Summersweet
<i>Ceanothus americanus</i>	New Jersey tea
<i>Vaccinium angustifolia</i>	Lowbush blueberry

#### Spring Flowering Plants

<i>Fragaria virginiana</i>	Wild strawberry
<i>Geranium maculatum</i>	Wild geranium
<i>Penstemon digitalis</i>	Foxglove beardtongue
<i>Viola pedata</i> or <i>sororia</i>	Common violet

#### Summer Flowering Plants

<i>Asclepias incarnata</i>	Swamp milkweed
<i>Asclepias tuberosa</i>	Butterfly milkweed
<i>Eutrochium purpureum</i>	Joe Pye weed
<i>Liatris spicata</i>	Blazing star
<i>Liatris novae-angliae</i>	New England blazing star
<i>Monarda didyma</i>	Bee balm
<i>Monarda fistulosa</i>	Wild bergamot
<i>Monarda punctata</i>	Spotted bee balm
<i>Pycnathemum muticum</i>	Mountain mint
<i>Solidago speciosa</i>	Showy goldenrod
<i>Verbena hastata</i>	Blue vervain
<i>Vernonia noveboracensis</i>	New York ironweed
<i>Veronicastrum virginicum</i>	Culver's root

#### Fall Flowering Plants

<i>Chelone glabra</i>	White turtlehead
<i>Eurybia macrophylla</i>	Large-leaved aster
<i>Rudbeckia triloba</i>	Brown-eyed Susan
<i>Solidago odora</i>	Sweet goldenrod
<i>Solidago caesia</i>	Blue-stemmed goldenrod
<i>Symphotrichum novae-angliae</i>	New England aster

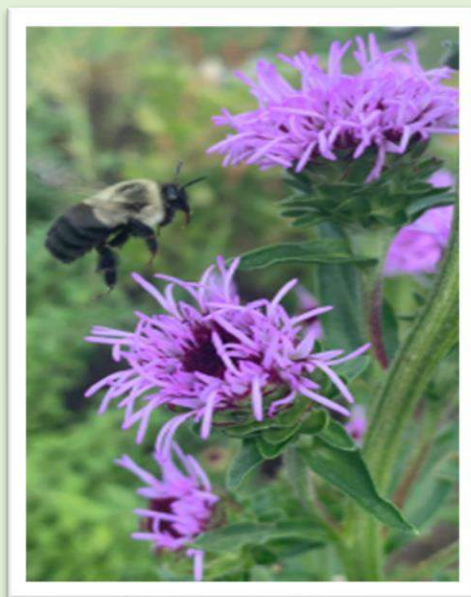
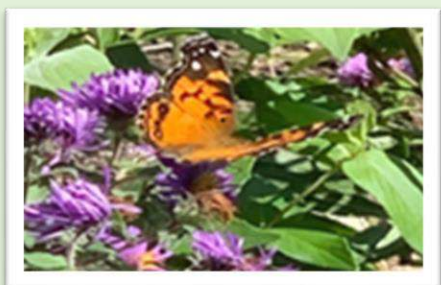
## Introduction to online Newton Pollinator Toolkit

Our environment is at risk because of precipitous declines in habitat, native plants and the insects, birds, and other animals that depend on those plants. The pollinators that are an essential part of making the whole system work are in serious decline. This pollinator toolkit contains information about the problem and some easy steps you can take to help alleviate it—while creating a fascinating and vibrant garden at the same time. The toolkit focuses exclusively on **native plants** that attract pollinators.

Native plants are important because they co-evolved with the creatures that pollinate them. Non-native species, which are most of the plants you find at most nurseries, don't provide the same high-quality resources for the pollinators—and often do not even attract them. Pollinators help plants to reproduce and, in turn, are fed by those plants and then provide food for birds and other animals. This cross-fertilization provided by pollinators results in the genetic biodiversity necessary for a healthy planet.

The popular book *Nature's Best Hope*, written by wildlife ecology professor Douglas Tallamy, is subtitled *A New Approach to Conservation That Starts in Your Yard*. Dr. Tallamy explains that we should make our yards into parts of a collective wildlife web, or network, to provide the wildlife habitat that is vanishing throughout the world. "Envision your property," he writes, "as one small piece of a giant puzzle, which, when assembled, has the potential to form a beautiful ecological picture . . . In the past, we have asked one thing of our gardens: that they be pretty. Now they have to support life, sequester carbon, feed pollinators and manage water. We can work together to be "Nature's Best Hope" by creating native plant gardens that support the pollinators we need."

Follow this link to read more:



# Newton Free Library Pollinator Garden (Non-Hosted)

## PLANTING SCHEDULE

Qty.	Latin Name	Common Name	Size	Notes
<b>Shrubs</b>				
11	ARONIA ARBUTIFOLIA 'BRILLANTISSIMA'	RED CHOKEBERRY	5 Gal.	Container
3	CORNUS RACEMOSA	GRAY DOGWOOD	10 Gal.	Container
28	CORNUS SERICEA 'ARCTIC FIRE'	RED OSIER DOGWOOD	5 Gal.	Container
24	DIERVILLA 'KODIAK ORANGE'	KODIAK ORANGE DIERVILLA	3 Gal.	Container
6	HAMAMELIS VIRGINIANA	AMERICAN WITCHHAZEL	4/5' Ht.	B&B
34	ILEX GLABRA 'COMPACTA'	COMPACT INKBERRY	5 Gal.	Container
32	MYRICA PENNSYLVANICA	NORTHERN BAYBERRY	5 Gal.	Container

## Perennials, Grasses, Groundcovers

216	AMSONIA TABERNAEMONTANA 'BLUE ICE'	BLUE STAR AMSONIA	1 Gal.	Container
32	ANDROPOGON GERARDII	BIG BLUESTEM	2 Gal.	Container
269	ASCLEPIAS TUBEROSA	BUTTERFLY MILKWEED	1 Gal.	Container
11	ASTER NOVAE-ANGLIAE 'PURPLE DOME'	NEW ENGLAND ASTER	1 Gal.	Container
601	CAREX PENNSYLVANICA	PENNSYLVANIAN SEDGE	1 quart	Container
47	COREOPSIS LANCEOLATA 'MOONBEAM'	WHORLED TICKSEED	1 Gal.	Container
307	DESCHAMPSIA FLEXUOSA	WAVY HAIR GRASS	1 Gal.	Container
30	GAULTHERIA PROCUMBENS	WINTERGREEN	4" Pot/15 In Tray	Tray
394	IRIS VERSICOLOR	BLUE FLAG IRIS	1 Gal.	Container
328	LIATRIS ASPERA	ROUGH BLAZING STAR	1 Gal.	Container
21	LOBELIA CARDINALIS	CARDINAL FLOWER	1 Gal.	Container
60	MOLINIA CAERULEA	PURPLE MOOR GRASS	2 Gal.	Container
78	MONARDA FISTULOSA	WILD BERGAMOT	1 Gal.	Container
61	OENOTHERA FRUTICOSA	EVENING PRIMROSE	1 Gal.	Container
186	PANICUM VIRGATUM	SWITCH GRASS	2 Gal.	Container
545	RUDBECKIA 'AMERICAN GOLD RUSH'	BLACK-EYED SUSAN	1 Gal.	Container
414	SCHIZACHYRIUM SCOPARIUM	LITTLE BLUESTEM	2 Gal.	Container
30	SOLIDAGO SPECIOSA	SHOWY GOLDENROD	1 Gal.	Container
765	WALDSTEINIA FRAGARIOIDES	BARREN STRAWBERRY	1 quart	Container

\* Proposed in 2021

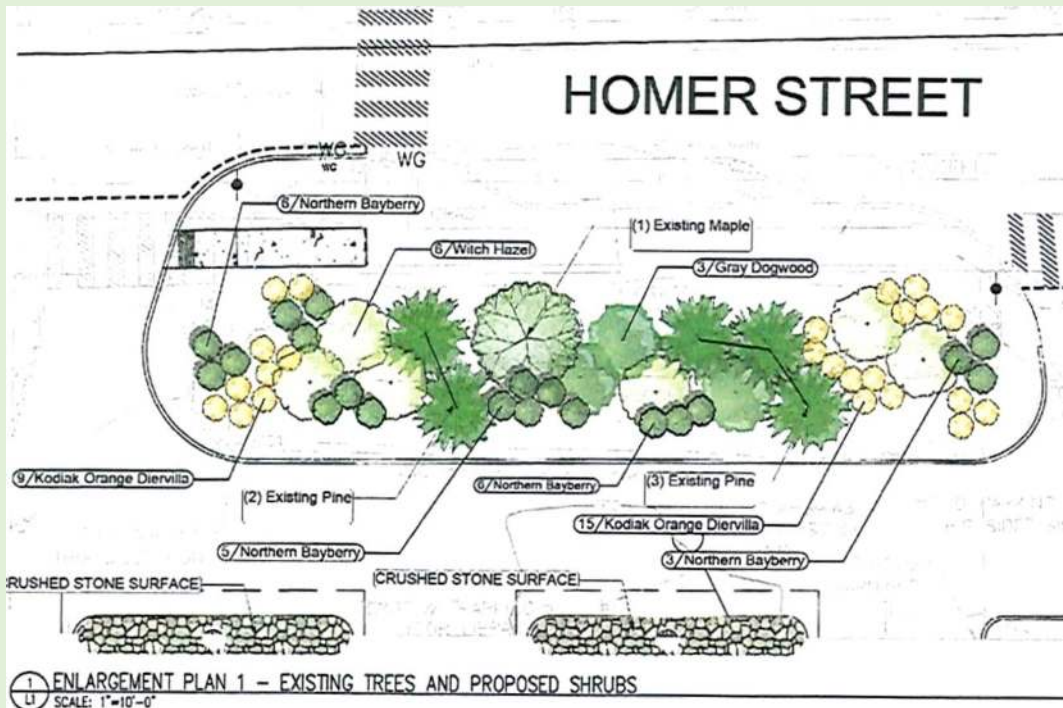
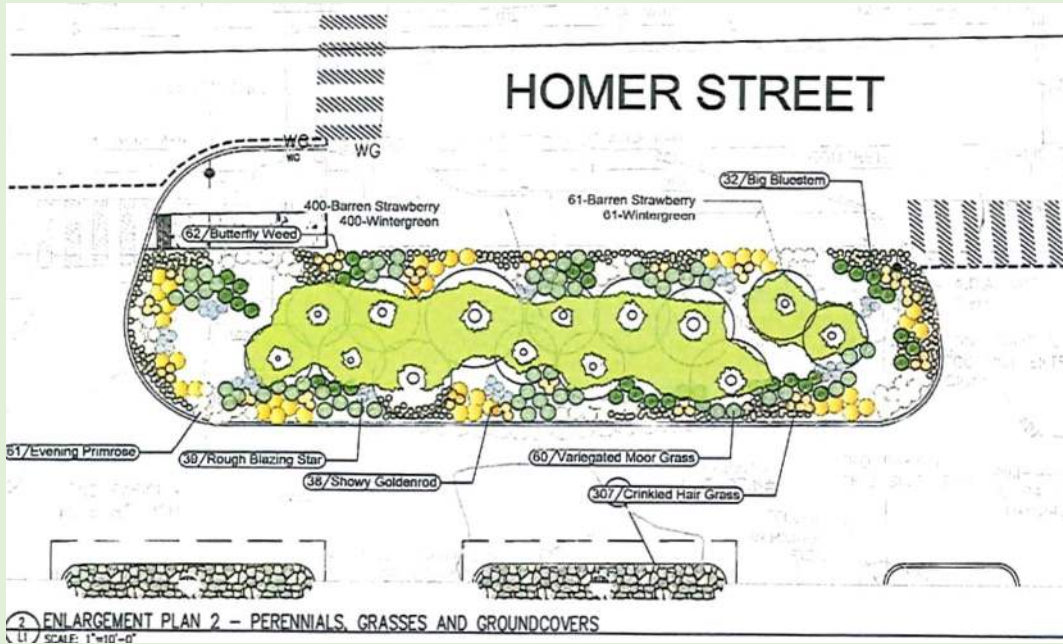
\* The plant list and renderings are from the original proposal for the Newton Free Library site.

\* The actual garden may differ from the proposal plans.

\* See the following two pages for the proposed garden site plans.

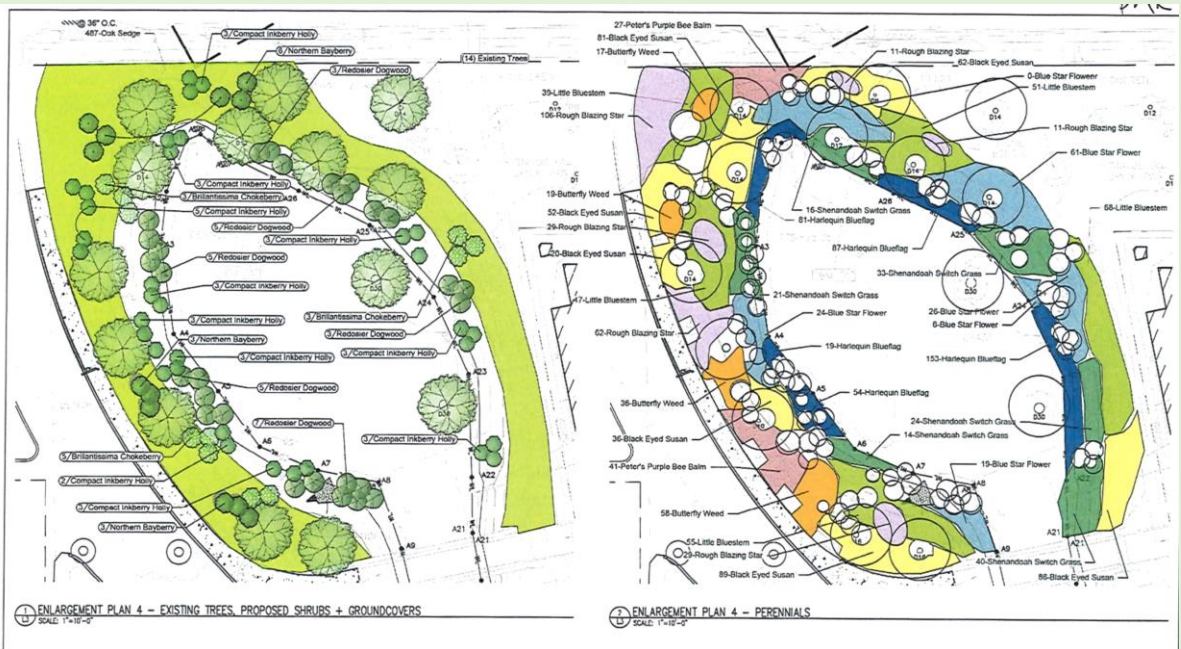
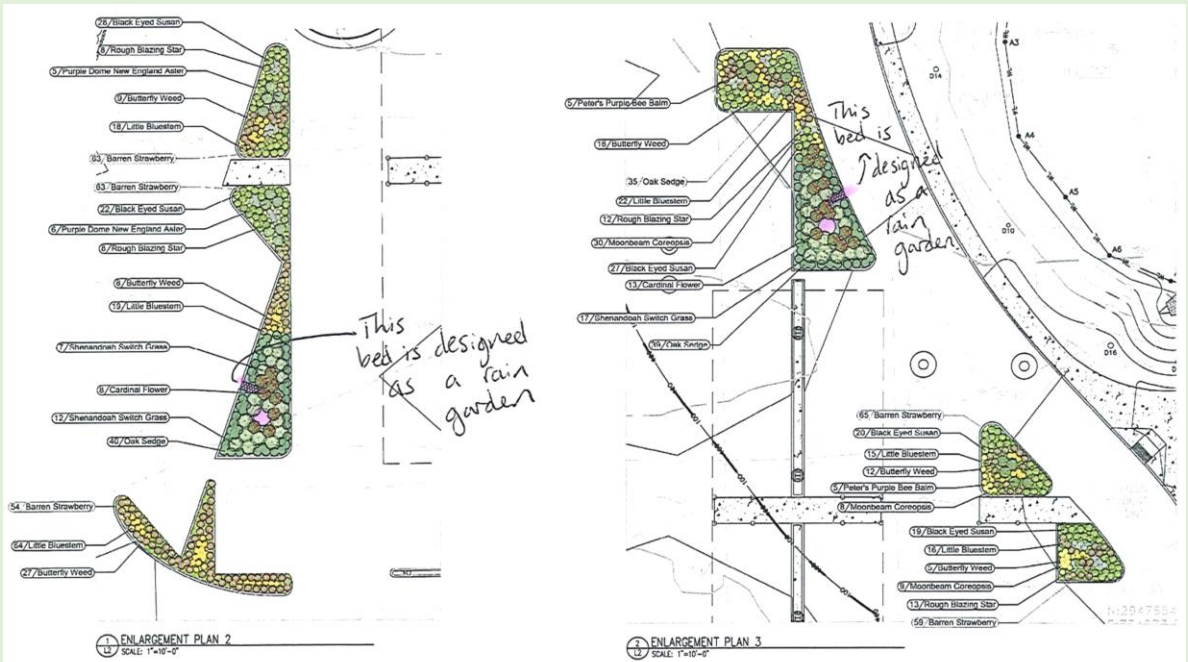
\* Lots of parking around City Hall or in the Library parking lot.

# Newton Free Library Pollinator Garden





# Newton Free Library Pollinator Garden



# Cold Spring Park Pollinator Garden

## Newton Pollinator Garden Tour

- \* A HOSTED pollinator garden (Alan Noguee, Friends of Cold Spring Park)
- \* A bee-centric garden (Dr. Gegeer recommended plants)
- \* This garden was installed as Boy Scout Eagle project
- \* Lots of parking to the left once inside the main entrance on Beacon Street
- \* There are other NON-HOSTED native plant restoration areas at other locations in Cold Spring Park (e.g. Brookside & Small Meadow)





# Cold Spring Park Pollinator Garden Plant List

1200 Beacon St., Newton, MA 02461

Species were chosen from [Dr. Robert Gegear's plant list](#) based on his research on bumblebees and butterflies at risk of local extinction, with a few native volunteers allowed to remain. The 33 species will provide nectar and pollen from early spring to late fall.

Agastache foeniculum Anise hyssop volunteer	Carex pensylvanica Pennsylvania sedge	Monarda didyma Scarlet beebalm	Rosa Carolina Carolina rose
Agastache scrophularifolia Purple giant hyssop	Cercis canadensis Redbud tree	Monarda fistulosa Wild bergamot	Rubus odoratus Purple flowering raspberry
Asclepias incarnata Rose (swamp) milkweed	Doellingeria umbellata Flat-topped white aster	Penstemon digitalis Foxglove Beardtongue	Salix humilis Prairie willow
Asclepias tuberosa Butterfly milkweed	Eragrostis spectabilis Purple lovegrass	Penstemon hirsutus Hairy beardtongue	Schizachyrium scoparium Little bluestem
Astragalus canadensis Canadian milkvetch	Geranium maculatum Wild geranium	Physotegia virginiana Obedient plant Volunteer	Solidago caesia Bluestem goldenrod
Baptisia tinctoria Yellow wild indigo	Hypericum ascyron Great St. John's Wort Volunteer	Prunella vulgaris Self-heal	Solidago speciosa Showy goldenrod
Blephilia ciliata Downy wood-mint	Hypericum prolificum Shrubby St. John's Wort	Prunus maritima Beach plum	Spiraea alba White Meadowsweet
Blephilia hirsuta Hairy wood-mint	Lupinus perennis Wild lupine	Pycnanthemum tenuifolium Narrowleaf mountain mint Volunteer	Viola sororia Common blue violet  Zizia aurea Golden alexander

Plant list with links to pictures, descriptions, and sources: <https://coldspringpark.org/pollinator-garden-plant-list-and-design/>

Dr. Gegear's complete plant list:  
<https://gegearlab.weebly.com/plant-list.html>



Planting the garden was the Eagle Project of Dobi Wollaber, Troop 209. Co-sponsors: Friends of Cold Spring Park, Newton Dept. of Parks, Recreation & Culture, Green Newton, Newton Conservators.

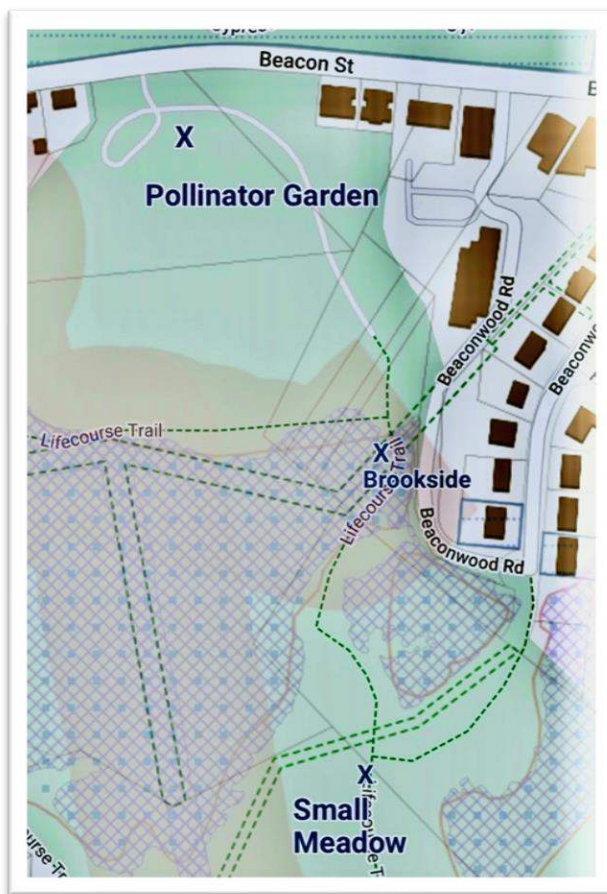


Optional – walk to restoration areas:

**Brookside:** a 4-minute walk south along the driveway and straight ahead on the stone dust trail before the bridge over the brook. The Newton Conservators and Friends of Cold Spring Park have been removing invasive knotweed and lesser dock. The Department of Public Works dredged the brook in 2022 and removed a mound of knotweed roots left from prior dredging. They planted four silky dogwood and two sweet pepperbush. The area has largely filled in with jewelweed, cattails, and cottonwood saplings.

**Along the way:** Continue south over the bridge. On a spur to the right, notice a sign marking the entrance to the Newton Conservators buckthorn demonstration area (a 5-minute walk into the swamp; not recommended), experimenting with different approaches to invasive buckthorn removal. On the next rise, look for native witch hazel shrubs, with witch hazel galls that look like little witches' hats, housing the witch hazel gall aphid.

**Small meadow:** Another two minutes south to the intersection with the trail from Beaconwood Road. The Newton Conservators and Friends of Cold Spring Park have been removing Tree of heaven. A small section to the right of the trail was seeded with a pollinator-friendly mix, with poor results. A large patch of common milkweed, along with goldenrod, pokeberry, and some snakeroot have largely filled in the main area.



# The Cold Spring Park Pollinator Garden



Two (of at least 12) at-risk species supported  
Golden northern bumblebee  
(*Bombus fervidus*)



Indian skipper  
(*Hesperia sassacus*)

Newton's first public garden with plants chosen through research on saving bees and butterflies at risk of local extinction.



Located at the park entrance, in front of the tennis courts, the Cold Spring Park Pollinator garden includes 30 plant species that bloom from spring to fall.

Based on the research of UMass Dartmouth Professor Robert Gegear, these plants are preferred by two bumblebees and ten butterflies that were once common in Eastern Mass. but are now at risk of local extinction.

You can help save these important pollinators by planting some of the same plants in your own garden.





## Why a pollinator garden?

More than 85 percent of the plants in our environment depend on animals to reproduce successfully! Without these pollinators, our ecosystem would collapse.

Bumblebees are our most important local pollinator. We've already lost two of 11 species in Massachusetts and three more are imperiled.

Insects often feed only on certain plants. The best way to save them is to use the native plants they evolved with. (Examples on other side.)

Also, we can avoid pesticides, shrink lawns, and leave leaves and stems in the fall garden (so pollinators can nest in them over the winter.)

The Cold Spring Park Pollinator garden aims to preserve the pollination system: both the plants and the pollinators that need each other.

Planting the garden was the Eagle Scout project of DoBi Wollaber and Troop 209.



Ten pollinator powerhouse plants (of 33 species in the garden) to provide at-risk bees pollen and nectar from Spring to Fall:

**Pollen**  
(shrubs)



Native willows (male)



Carolina rose



St. John's wort



Purple flowering raspberry



Meadowsweet

**Nectar**



Wood betony



Foxglove beardtongue



Wild bergamot



Self-heal



Purple giant hyssop

For the Cold Spring garden plant list, with links to pictures, descriptions, and sources, scan here:



For the complete list of Dr. Gegear's recommended plants:



For the Newton Community Pollinator Project Facebook page:



For the story of the Cold Spring garden-- what, why, and how-- scan here:



For the Newton Conservators' Pollinator Toolkit:



Join or volunteer with the Friends of Cold Spring Park:



**Visit the garden at  
Cold Spring Park,  
1094 Beacon Street,  
Newton, Mass.**

Friends of Cold Spring Park  
P.O. Box 610023  
Newton, MA 02461  
FriendsOfColdSpringPark@gmail.org  
www.coldspringpark.org