

# Newton Pollinator Garden Tour

*Sponsored by:*



**SIGN UP TODAY**  
Sunday, September 15th 1PM to 4PM  
Raindate: Sunday September 22nd

Join gardening enthusiasts on a FREE tour of public and private pollinator gardens in Newton, the "Garden City".

Learn more and get registration information:

<https://newtonconservators.org/events/second-annual-newton-pollinator-garden-tour/>



Thanks to our cosponsors for supporting this 2<sup>nd</sup> Annual 2024 Newton Pollinator Garden Tour:

- [Newton Community Pollinator Project](#)
- [Newton Conservators](#)
- [Newton Parks Recreation and Culture Department](#)
- [Green Newton](#)
- [Friends of Cold Spring Park](#)
- [Friends of Wellington Park](#)
- [Mothers Out Front – Newton](#)
- [Newton Cemetery & Arboretum](#)

# Newton Pollinator Garden Tour

*Sponsored by:*



**SIGN UP TODAY**  
 Sunday, September 15th 1PM to 4PM  
 Raindate: Sunday September 22nd

Join gardening enthusiasts on a FREE tour of public and private pollinator gardens in Newton, the "Garden City".

Learn more and get registration information:

<https://newtonconservators.org/events/second-annual-newton-pollinator-garden-tour/>



ADDRESS	VILLAGE	GARDEN	PAGE
Kilburn Road	West Newton, MA 02465	Wellington Park	6
Southgate & Northgate	West Newton, MA 02466	Northgate / Southgate Park Traffic Island	9
18 Lindbergh Avenue	West Newton, MA 02469	Meg's Garden	10
24 Henshaw Terrace	West Newton, MA 02467	Henshaw Haven	11
370 Cherry Street	West Newton, MA 02470	Jenny's Garden	13
101 River Street	West Newton, MA 02468	Galli Family Garden	14
4 Brookside Ave	Newtonville, MA 02460	NHA Horace Mann Community Center Garden	15
15 Roberts Avenue	Newtonville, MA 02460	Emily's Garden	17
City Hall Drive	Newton Center, MA 02459	City Hall Pollinator Garden	19
330 Homer Street	Newton Center, MA 02459	Newton Free Library Pollinator Garden	22
791 Walnut Street	Newton Center, MA 02459	Newton Cemetery Pollinator Garden	25
32 Garland Road	Newton Center, MA 02459	Jon's Garden	27
11 Homer Street	Newton Center, MA 02459	Trinity Parish	30
1200 Beacon Street	Newton Highlands, MA 02461	Cold Spring Park Pollinator Garden	31
54 Lincoln Street	Newton Highlands, MA 02461	Newton Highlands Congregational Church	36
48 Kingston Road	Newton Highlands, MA 02461	Alan's Garden (> 4pm)	39

# Newton Pollinator Garden Tour Map September 14, 2024, 1-4 pm NORTH SECTION

**Newton Pollinator Garden Tour**

Sponsored by:

- NEWTON CONSERVATORS
- MOTHERS OUT FRONT NEWTON, MA
- Green Newton
- FOWP
- Newton Cemetery of Arlington

**SIGN UP TODAY**  
Sunday, September 15th 1PM to 4PM  
Raindate: Sunday September 22nd

Join gardening enthusiasts on a FREE tour of public and private pollinator gardens in Newton, the "Garden City".

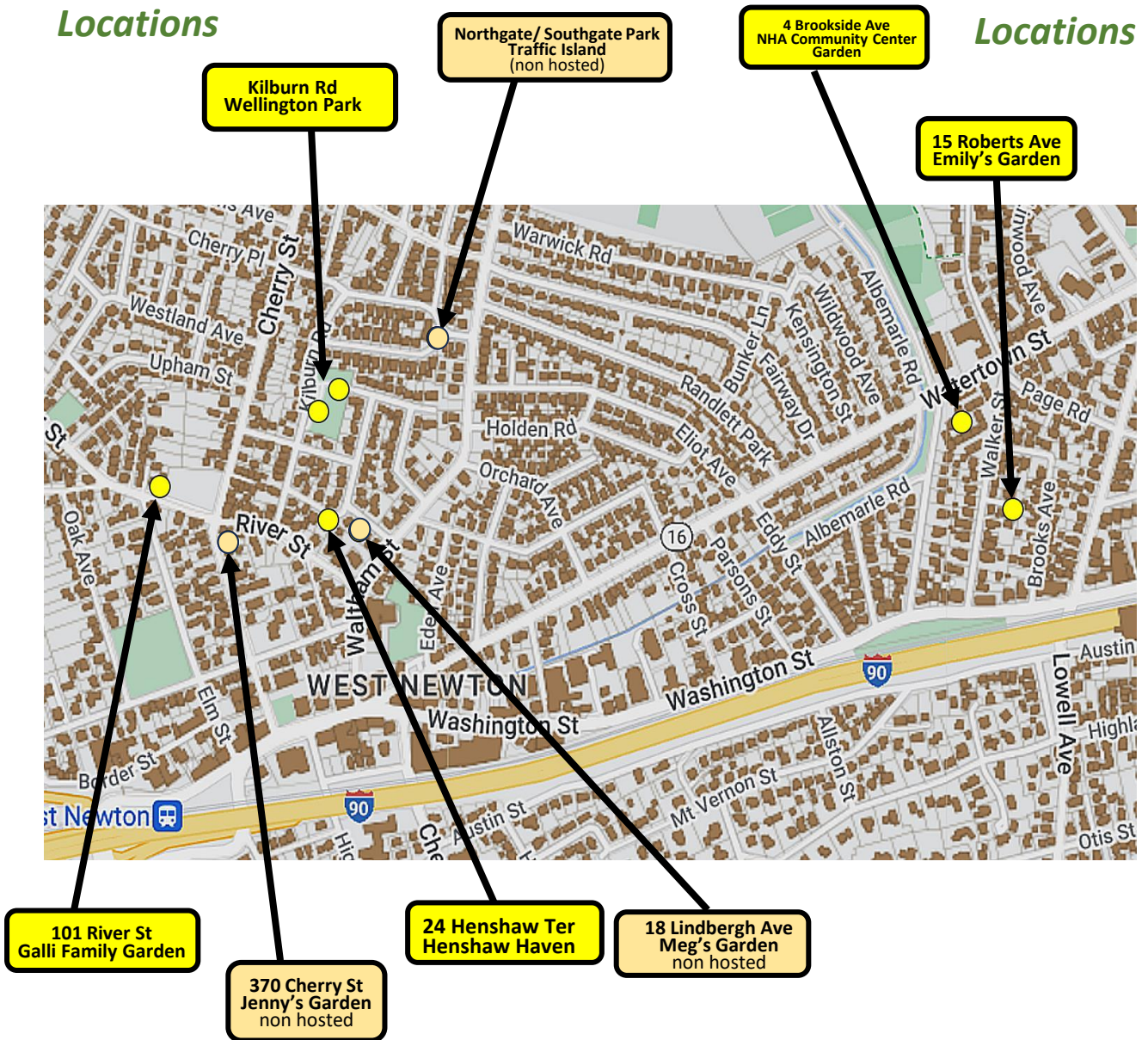
Learn more and get registration information:  
<https://newtonconservators.org/events/second-annual-newton-pollinator-garden-tour/>



Look for this sign at most locations!

## West Newton Locations

## Newtonville Locations



# Newton Pollinator Garden Tour Map

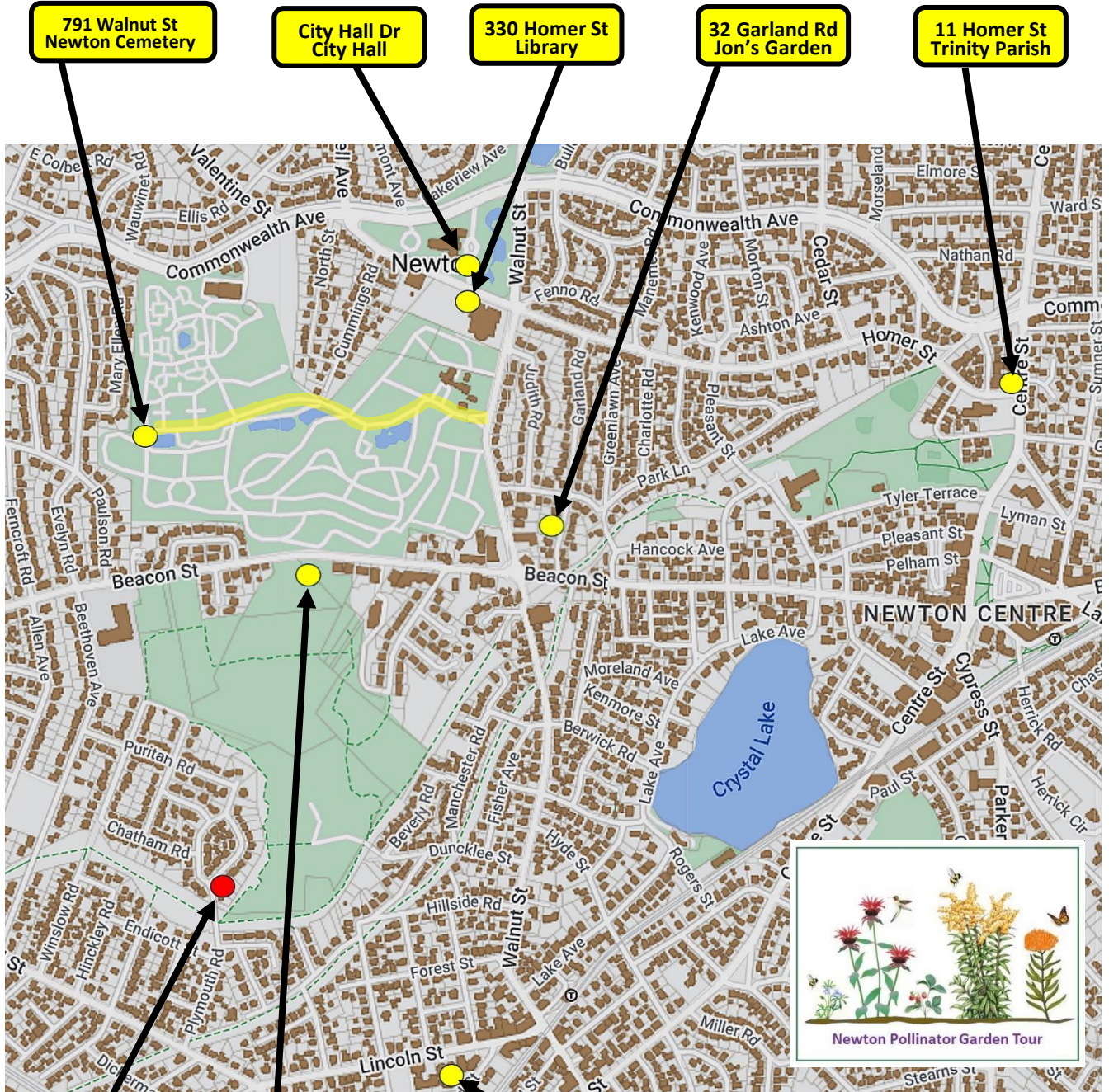
## September 14, 2024, 1-4 pm

### SOUTH SECTION



<https://newtonconservators.org/events/second-annual-newton-pollinator-garden-tour/>

### Newton Center Locations



48 Kingston Rd  
Alan Noguee  
4 - 5:30 pm only

1200 Beacon St  
Cold Spring Park

54 Lincoln Street  
Newton Highlands  
Congregational Church

### Newton Highlands Locations

# West Newton Pollinator Tour Gardens



HOSTED

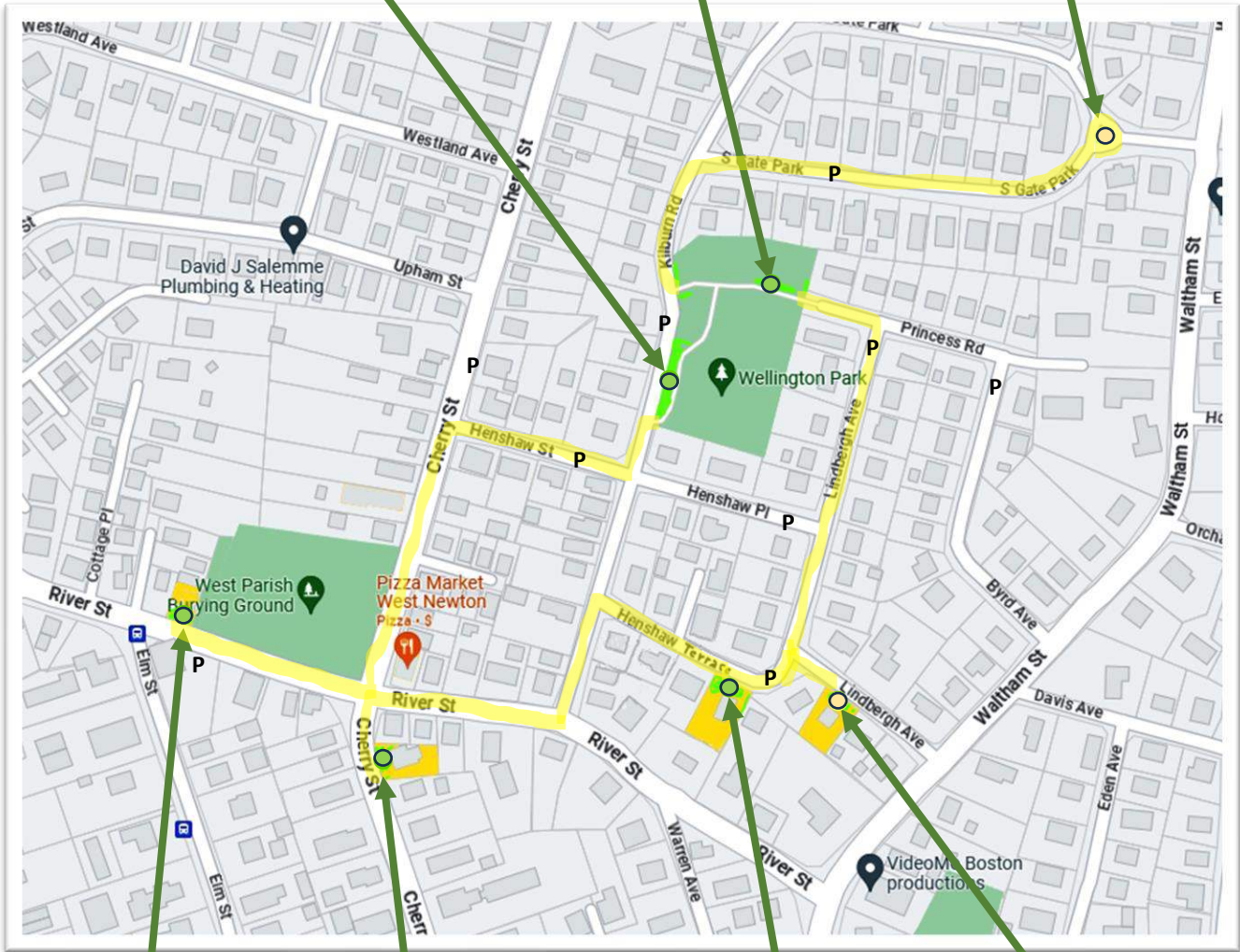
NON-HOSTED



Wellington Park Main Bed

Wellington Park Tennis Court Bed

Northgate / Southgate Park Island



101 River Street  
Galli Family Garden



370 Cherry Street  
Jenny's Garden



24 Henshaw Terrace  
Henshaw Haven



18 Lindbergh Avenue  
Meg & Peter's Garden



# Kilburn Road, West Newton Wellington Park (Main Bed)

Hosts: Ann Dorfman, Cathy Lee



Wellington Park - Main Bed			
Kilburn Road, W Newton, MA			
Common Name	Cultivar'	Genus and Species	Native status
ALLIUM	Chinese chives	<i>Allium tuberosum</i>	non-native
AMSONIA	Blue Ice	<i>Amsonia tabernaemontana</i>	Southeast US Native
ANISE HYSSOP	Agastache	<i>Agastache foeniculum</i>	Mid-west US Native
ARTEMISIA	Silver Queen' possible	<i>Artemisia ludoviciana</i>	Western US native
ASTER		<i>New England Aster</i>	Northeast US Native*
ASTILBE		<i>Astilbe</i>	non-native
AZALEA			non-native
BAPTISIA		<i>Baptisia australis</i>	Eastern US native
BEARDED IRIS			non-native
BEEBALM	Scarlet beebalm	<i>Monarda didyma</i>	Eastern US native*
BLACK-EYED SUSAN	Goldsturm'	<i>Rudbeckia 'Goldsturm'</i>	N American Native
BLACK-EYED SUSAN	Hirta'	<i>Rudbeckia hirta</i>	N American Native*
GAYFEATHER	Blazing Star	<i>Liatris spicata</i>	Eastern US native
BLEEDING HEART		<i>Dicentra spectabilis</i>	non-native
CATMINT		<i>Nepeta</i>	non-native
COLUMBINE	Purple	<i>Aquilegia</i>	non-native
COLUMBINE	Red/yellow	<i>Aquilegia canadensis</i>	Eastern US native*
CONE FLOWER		<i>Echinacea purpurea</i>	Southeast US native
CORAL BELLS		<i>Heuchera</i>	Eastern US native
CORIOPSIS	Zagreb'	<i>Coreopsis verticillata</i>	Southeast US native
DAISY	Shasta	<i>Leucanthemum xsuperbum</i>	non-native
DAYLILY	Stella D'oro'	<i>Hemerocallis</i>	non-native
EUPHORBIA	Snow on Mountain	<i>Euphorbia marginata</i>	US prairy native - annual
EVENING PRIMROSE		<i>Oenothera lamarckiana</i>	Nativish
EVENING PRIMROSE		<i>Oenothera biennis</i>	Eastern US native*
FALSE SUNFLOWER		<i>Heliopsis helianthoides</i>	Eastern US native
GERANIUM		<i>Geranium maculatum</i>	Eastern US native*
GLOBEFLOWER		<i>Trollis</i>	non-native
GOLDENROD	Gray Goldenrod	<i>Solidago nemoralis</i>	Eastern US*
HYACINTH BEAN	Ruby Moon'	<i>Dolichos lablab</i>	non-native - Annual
HYDRANGEA	Lacecap	<i>Serata</i>	non-native
JAPANESE MAPLE		<i>Acer palmatum</i>	non-native
JOE PYE WEED		<i>Eutrochium purpureum</i>	Eastern US native*
LIRIOPE	Creeping Lilyturf'	<i>Liriope spicata</i>	non-native
MAXIMILLIAN'S SUNFLOWER		<i>Helianthus maximillian</i>	Great plains native
MILKWEED	Butterfly Milkweed	<i>Asclepias tuberosa</i>	N American Native*
MILKWEED	Common Milkweed	<i>Asclepias syriaca</i>	N American Native*
MILKWEED	Swamp Milkweed	<i>Asclepias incarnate</i>	N American Native*
OBEDIENT PLANT		<i>Physostegia virginiana</i>	Eastern US native
OREGANO		<i>Origanum vulgare</i>	non-native

Continued next page

# Kilburn Road, West Newton Wellington Park (Main Bed - continued)

*Hosts: Ann Dorfman, Cathy Lee*

PENSTEMON	Huskers Red	<i>Penstemon digitalis 'Huskers'</i>	Eastern US native*
PEONY		<i>paeonia</i>	non-native
PERSICARIA		<i>Persicaria amphexicaulis</i>	non-native
PHLOX	Garden phlox	<i>Phlox paniculata</i>	Eastern US native
PRAIRY CORNFLOWER		<i>Ratibia pinnata</i>	Central US native
ROSE		<i>Rosa</i>	non-native
ROSE OF SHARON		<i>Hibiscus syriacus</i>	non-native
SALVIA		<i>Salvia nemorosa</i>	non-native
SAND CHERRY		<i>Prunus pumila x</i>	hybrid
SEDUM	Autumn Joy	<i>Sedum spectabile</i>	non-native
SEDUM	Creeping		non-native
SIBERIAN IRIS		<i>Iris sibirica</i>	non-native
SPIREA	Bridal wreath spirea	<i>Spiraea prunifolia</i>	non-native
SPIREA	Japanese spirea	<i>Spiraea japonica</i>	non-native
ST JOHN'S WORT	Shrubby St John's-wort	<i>Hypericum prolificum</i>	Eastern US native
VIOLET		<i>Viola sororia</i>	N American Native*
WEIGELIA	Wine and Roses	<i>Weigelia florida</i>	non-native
YELLOW LOOSESTRIFE		<i>Lysimachia punctata</i>	non-native
			* = Massachusetts Native

- Hosts will be onsite for the tour to answer any questions.
- The garden is colorful throughout the season as different flowers bloom and is immensely popular with pollinating insects!
- The main garden area in Wellington is maintained by volunteers and supervised mainly by local Ann Dorfman (Master Gardener).
- The Wellington Park garden has emphasized more native plants over the years.
- This has been a NewtonSERVES site since it's inception.
- This area was first used as a daffodil and tulip garden around 2000 but has vastly transformed from that time.
- The pathway and bench were added later around 2007.
- Other amenities at Wellington Park are the playground, basketball and tennis courts, fields, water fountain, and Little Free Library.



# Kilburn Road, West Newton

## Wellington Park (Tennis Court / Butterfly Garden Bed)

*Host: Mark Feldhusen*

Wellington Park - Tennis Court Bed - Pollinator Garden Plant List 9/14/24		
Common Name	Latin Name	Bloom Time
Mexican hyssop	<i>Agastache foeniculum</i>	Summer
Common columbine	<i>Aquilegia vulgaris</i>	Spring
Red chokeberry	<i>Aronia arbutifolia</i>	Spring/Fall
Red Chokeberry	<i>Aronia melanocarpa</i>	Spring
Black chokeberry	<i>Aronia melanocarpa</i>	Spring/Fall
White sagebrush	<i>Artemesia ludoviciana</i>	Summer
Swamp milkweed	<i>Asclepias incarnata</i>	Summer
Common milkweed	<i>Asclepias syriaca</i>	Summer
Butterfly weed	<i>Asclepias tuberosa</i>	Summer
New England Aster	<i>Aster novae-angliae</i>	Fall
Downy woodmint	<i>Blephilia ciliata</i>	Spring
Blue gramma grass	<i>Bouteloua gracilis</i>	Summer
Coneflower	<i>Echinacea purpurea</i>	Summer
Sawtooth sunflower	<i>Helianthus grosseserratus</i>	Fall
Gay feather	<i>Liatris spicata</i>	Summer
Blue cardinal flower	<i>Lobelia siphilitica</i>	Summer
Rose campion	<i>Lychnis coronaria</i>	Summer
Scarlet beebalm	<i>Monarda didyma</i>	Spring
Wild bergamot (bee balm)	<i>Monarda fistulosa</i>	Summer
Wood betony	<i>Pedicularis canadensis</i>	Spring
American pokeweed	<i>Phytolacca americana</i>	Fall
Mountain mint	<i>Pycnanthemum muticum</i>	Summer
Prairie coneflower	<i>Ratibia pinnata</i>	Summer
Flowering raspberry	<i>Rubus odoratus</i>	Summer
Yellow coneflower	<i>Rudbeckia fulgida</i>	Fall
Cutleaf coneflower	<i>Rudbeckia lanciniata</i>	Fall
Brown-eyed Susan	<i>Rudbeckia triloba</i>	Summer
Little Bluestem	<i>Schizachyrium scoparium</i>	Summer
Figwort	<i>Scrophularia lanceolata</i>	Spring
Autumn Joy sedum	<i>Sedum spectabilis</i>	Fall
Wild senna	<i>Senna hebecarpa</i>	Summer
Goldenrod	<i>Solidago (various)</i>	Fall
Mexican sunflower	<i>Tithonia rotundifolia</i>	Summer
Purpletop vervain	<i>Verbena bonariensis</i>	Summer
Blue Vervain	<i>Verbena hastata</i>	Summer
Common violet	<i>Viola soraria</i>	Spring

- This section of Wellington Park was started within the last 10 years for Monarchs with five Common Milkweed plants.
- Today is draw a great variety of pollinators!
- This site is an official Monarch Waystation!
- It's a good example of usage of otherwise unused green border space in a park.





# Northgate / Southgate Park Traffic Island, West Newton

## (Non Hosted)

North/Southgate Park Traffic Island			
Common name	Cultivar	Botanical Name	Native Range
Amsonia	Blue Ice	Amsonia Tabernaemontana 'B	Central/eastern US
Amsonia	Bluestar	Amsonia Tabernaemontana	Central/eastern US
Aster			Eastern US
Black eyed susan	Goldsturm'	Rudbeckia fulgida sullivantii	Eastern US
Black eyed susan	hirta	Rudbeckia hirta	Eastern US
Bleeding heart		Lamprocapnos spectabilis, forr	non-native
Carex			non-native
Catmint		Nepeta	non-native
Coneflower		Echinacea purpurea	Southeastern US
Daisy	Shasta	Leucanthemum x superbum	non-native
Day lily	Stella d'oro	Hemerocallis 'Stella d'oro'	non-native
Euphorbia			non-native
Geranium	Bigroot	Geranium macrorrhizum	non-native
Geranium	Cranesbill	Geranium sanguineum	non-native
Goatsbeard		Aruncus dioicus	US Native
Goldenrod	Fireworks	Solidago rugosa 'fireworks'	Eastern US
Knockout roses	Rainbow		non-native
Large flower Tickseed		Coriopsis grandiflora	South/central US
Marigolds			non-native
Salvia		Salvia	non-native
Sedum	Autumn Joy	Sedum spectabile 'Autumn Joy	non-native
Sedum	Creeping		non-native
Siberian Iris			non-native
Snake root	Chocolate	Eupatorium rugosum 'Chocolat	Eastern US
Speedwell		Veronica	non-native
Spirea			non-native
Swamp milkweed		Asclepias incarnata	Eastern US
Sycamore Tree			Eastern US
Wandflower		Gaura lindheimeri	South/central US

- This traffic island garden is maintained by volunteers from Wellington Park.
- Parking is available on neighboring streets.
- This site is not hosted during the tour
- An example of beautification of a small public space.



**16 Lindbergh Avenue, West Newton, MA**  
**Meg & Peter's Garden**  
**(Non-hosted)**

<input type="radio"/> Ajuga - bugleweed	<input type="radio"/> Joe Pye weed
<input type="radio"/> Asian lily	<input type="radio"/> Juniper - blue star
<input type="radio"/> Black eyed Susan	<input type="radio"/> Lavender
<input type="radio"/> Boxwood	<input type="radio"/> Ligularia
<input type="radio"/> Bronze fennel	<input type="radio"/> Lily of the valley
<input type="radio"/> Butterfly bush	<input type="radio"/> Lupine
<input type="radio"/> Butterfly weed - Asclepius tuberosa	<input type="radio"/> May Apple
<input type="radio"/> Clematis panniculata - sweet autumn	<input type="radio"/> Pachysandra
<input type="radio"/> Coral bells	<input type="radio"/> Peonies
<input type="radio"/> Coreopsis	<input type="radio"/> Phlox
<input type="radio"/> Day Lily - several varieties	<input type="radio"/> Pulmonaria
<input type="radio"/> Echinacea	<input type="radio"/> Rhododendron
<input type="radio"/> Geranium	<input type="radio"/> Rose
<input type="radio"/> Hakone - "aureola"	<input type="radio"/> Salvia
<input type="radio"/> Hakone - Japanese first grass	<input type="radio"/> Sedum
<input type="radio"/> Helleborus	<input type="radio"/> Sedum - autumn joy
<input type="radio"/> Hosta	<input type="radio"/> Spiderwort
<input type="radio"/> Iris	<input type="radio"/> Spirea
<input type="radio"/> Iris - Japanese	<input type="radio"/> Sweet woodruff

- This front yard and sidewalk berm garden attracts a lot of pollinators.
- This site is not hosted during the tour but worthwhile visiting as an example what can be done with a front yard instead of a grass lawn.
- Parking is available on neighboring streets
- Close to 24 Henshaw Terrace tour site



# 24 Henshaw Terrace, West Newton, MA

## Henshaw Haven

Hosts: Ted & Janet Kuklinski



- \* This front yard site is an official Monarch Waystation and has over 200 milkweed plants.
- \* Supports a large variety of pollinating insects (see examples next page).
- \* This is a hosted site. Parking is available on-street or you can walk from Wellington Park
- \* Definitely not a formal garden (more meadowish) and requires very little maintenance.
- \* Most plants and pollinator insects can be found as observations on iNaturalist
- \* Many insects seen here were the first reports on iNaturalist in Newton



American Asters  
Genus *Symphoricarpos*



Annual Fleabane  
Genus *Erigeron*



Beebalm  
Genus *Monarda*



Blue-flag Iris  
Genus *Iris*



Blue-eyed Grasses  
Genus *Sisyrinchium*



Buttercups  
Genus *Ranunculus*



Butterfly Bush  
Genus *Buddleia*



Butterfly Milkweed  
Genus *Asclepias*



Great Blue Lobelia  
Genus *Lobelia*



Common Dandelion  
Genus *Taraxacum*



Common Hawkweed  
Genus *Hieracium*



Common Milkweed  
Genus *Asclepias*



Common Star-of-Bethlehem  
Genus *Ornithogalum*



Common Wrinkle-leaved Goldenrod  
Genus *Solidago*



Coreopsis  
Genus *Coreopsis*



Cow Vetch  
Genus *Vicia*



Crepe Myrtle  
Genus *Lagerstroemia*



Eastern Cat-Mint  
Genus *Nepeta*



False Sunflower  
Genus *Helopsis*



Flowering Dogwood  
Genus *Cornus*



Steeplebush  
Genus *Spiraea*



Oxeyes  
Genus *Helianthus*



Peony  
Genus *Paeonia*



Phloxes  
Genus *Phlox*



Purple Coneflower  
Genus *Echinacea*



Purple Milkweed  
Genus *Asclepias*



Rabbit Foot Clover  
Genus *Trifolium*



Red Clover  
Genus *Trifolium*



Swamp Milkweed  
Genus *Asclepias*



Sweet Mock Orange  
Genus *Philadelphus*



Tiger Lily  
Genus *Lilium*



Lupine  
Genus *Lupinus*



Hosta  
Genus *Hosta*



Hibiscus  
Genus *Hibiscus*



Daffodils  
Genus *Narcissus*

# 24 Henshaw Terrace, West Newton, MA

## Henshaw Haven

Gardeners: Ted & Janet Kuklinski



What's a pollinator garden without pollinators? Here's a sampling of pictures of pollinators taken in this garden (most in Summer of 2023) and submitted as observations to iNaturalist. The pollinators especially enjoy the milkweeds, false sunflower, bee-balm, goldenrod, lobelia, and asters over the season. iNaturalist is a free application that, through photo observations of living organisms, provides identification assistance. Visit [inaturalist.org](https://www.inaturalist.org) for more info or download the free app on your phone.



Eastern Tiger Swallowtail  
*Papilio glaucus*



Monarch  
*Danaus plexippus*



American Lady  
*Vanessa virginiensis*



Red Admiral  
*Vanessa atalanta*



Peck's Skipper  
*Polites peckius*



Zabulon Skipper  
*Lon zabulon*



Silver-spotted Skipper  
*Eparavrus clarus*



Raspberry Pyrausta Moth  
*Pyrausta signatilis*



Grapeleaf Skeletonizer Moth  
*Harrisina americana*



Hummingbird Clearwing  
*Hemaris thysbe*



Snowberry Clearwing  
*Hemaris diffinis*



Squash Vine Borer  
*Eichlinia cucurbita*



Northern Broken-Dash  
*Polites egeremet*



Small White  
*Pieris rapa*



Common Eastern Bumble Bee  
*Bombus impatiens*



Two-spotted Bumble Bee  
*Bombus bimaculatus*



Brown-belted Bumble Bee  
*Bombus griseocollis*



Eastern Carpenter Bee  
*Xylocopa virginica*



Bicolored Striped Sweat Bee  
*Agapostemon virescens*



Pugnacious Leafcutter Bee  
*Megachile pugnata*



Louisiana Painted-Dark Bee  
*Stelis louisae*



Bee-mimic Robber Flies  
Genus *Laphria*



Narcissus Bulb Fly  
*Merodon equestris*



Great Golden Digger Wasp  
*Sphex ichneumoneus*



Hump-backed Beewolf  
*Philanthus gibbosus*



Bramble Mason Wasp  
*Ancistrocerus adiabatus*



European Tube Wasp  
*Ancistrocerus gazella*



Hidalgo Mason Wasp  
*Eudynerus hidalgo*



Black-footed Globetail  
*Sphaerophoria philanthus*



Margined Calligrapher  
*Toxomerus marginatus*



Eastern Calligrapher  
*Toxomerus geminatus*



Oblique Streaktail  
*Allagopta obliqua*



Transverse-banded Flower Fly  
*Eristalis transversa*



Thick-legged Hover Fly  
*Syrirta pipiens*



Complex *Condylostylus caudatus*  
Complex *Condylostylus caudatus*



*Scaphoideus incisus*  
*Scaphoideus incisus*



Red-banded Leafhopper  
*Graphocephala coccinea*



Rhododendron Leafhopper  
*Graphocephala fennae*



Red-headed Bush Cricket  
*Phyllopalpus pulchellus*



Scudder's Bush Katydid  
Genus *Scudderia*



Fourteen-spotted Lady Beetle  
*Propylea quatuordecimpunctata*



Asian Lady Beetle  
*Harmonia axyridis*



Obscure Plant Bug  
*Plagiognathus obscurus*



Small Milkweed Bug  
*Lygaeus kalmii*



Red Milkweed Beetle  
*Tetraepus tetrophthalmus*



False Milkweed Bug  
*Lygaeus turcicus*



Autumn Meadowhawk  
*Sympetrum vicinum*



Eastern Pondhawk  
*Erythemis simplicicollis*



Blue Dasher  
*Pachydiplax longipennis*

# 270 Cherry Street, West Newton, MA

## Jenny's Garden

(non Hosted)

Flowers	Notes
New England Aster	
Tall White Aster	towering - ready to bloom
False Aster	volunteer and profusive
Wrinkle Leaf Goldenrod	
Blue Stem Godenrod	
Blue Mist Flower	pretty - low growing 1-2 ft with pretty blue flowers
Blue Sage	tall
Monarda - Wild Bergamont	grown from seed - past flowering but tall and light purple
Monarda - Red	
Purple Coneflower	
Butterfly Milkweed	orange
Swamp Milkweed	pink flowers, narrow leaves
Common Milkweed	
False Sunflower	
Black-eyed Susan	
Buttonwort	volunteer - low growing, tiny white flowers
Marigolds	French- brocade mix and Starfire
Zinnias	Benarys giant deep red, cut and come again, Fruity beauty

- This front yard and sidewalk berm garden attracts a lot of pollinators.
- This site is non hosted for the tour but worth a look.
- This garden is a wonderful example of replacing grass with useful pollinator plants.
- Better to walk to this site on the tour or park in the next block north on Cherry Street or across from 101 River St. Not far from 101 River Street tour site



# 101 River Street, West Newton, MA

## *The Galli Family Garden*

*Hosts: the Galli Family*

common name	botanical name	bloom color	flowering time of year
Common milkweed	<i>Asclepias syriaca</i>	mauve/white/lavender	early-to-mid-summer
Swamp milkweed	<i>Asclepias incarnata</i>	pink	early summer
Butterfly weed	<i>Asclepias tuberosa</i>	orange	early-to-mid-summer
Sedum Autumn Joy	<i>Hylotelephium 'Autumn Joy.'</i>	pink / purple	late summer to fall
False Dragonhead / Obedient Plant	<i>Physostegia virginiana</i>	lavender	late summer to fall
New England Aster	<i>Symphotrichum novae-angliae</i>	lavender/purple/yellow center	fall
Catnip	<i>Nepeta cataria</i>	lavender	mid-to-late spring
Dwarf red McIntosh tree	<i>Malus domestica 'McIntosh'</i>	white / pink	early-to-mid-spring
Garden sorrel	<i>Rumex acetosa</i>	green/yellow	spring through summer
Purple Coneflower	<i>Echinacea Purpurea</i>	purple	late spring to-mid-summer
White Sage, Wormwood, Mugwort, Ghost Plant	<i>Artemisia Valerie Finnis</i>	light green/yellow/white	mid-summer through fall
Peony	<i>Paeonia</i>	deep magenta	late spring
Bugle weed	<i>ajuga</i>	purple	mid-spring
Phlox	<i>Phlox Paniculata 'Spring Delight'</i>	lavender/pink	mid-to-late summer
Evening primrose	<i>Oenothera biennis</i>	yellow	late-spring
Lavender	<i>Lavandula</i>	purple	early-to-mid summer
Creeping phlox	<i>Phlox stolonifera</i>	purple	mid-spring
Oregano	<i>Origanum vulgare</i>	white	late spring to late summer
Gooseneck loosertrife	<i>Lysimachia clethroides</i>	white	mid-to-late summer
Shasta daisy	<i>Leucanthemum × superbum</i>	white with yellow center	early-to-mid-summer

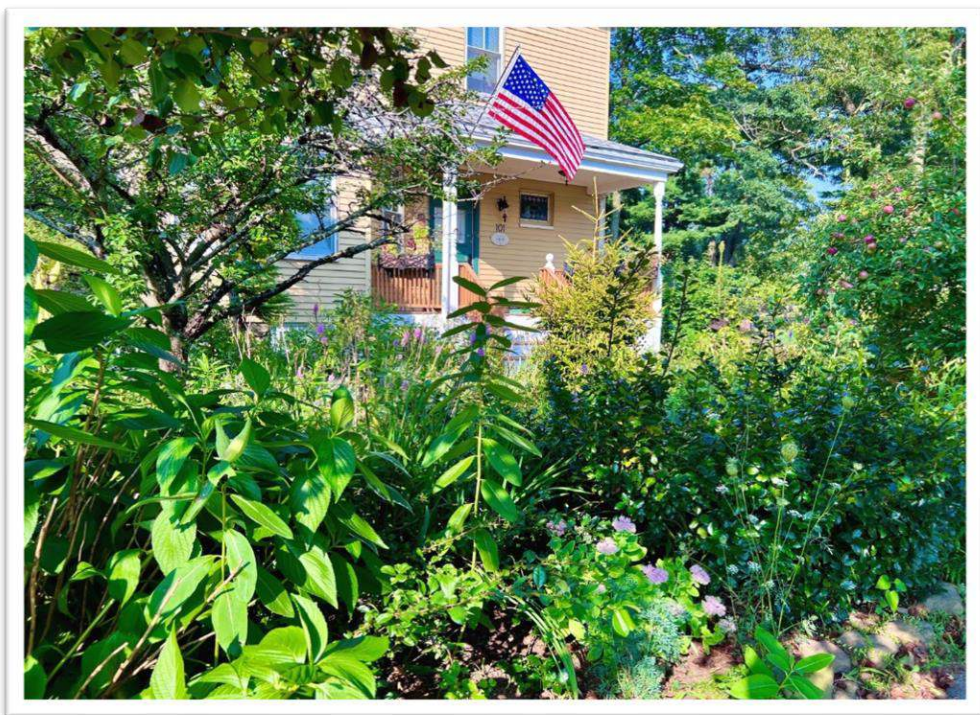
**This front yard garden attracts a lot of pollinators.**

**It features lots o milkweed, especially Butterfly Milkweed and even an apple tree.**

**The Galli Family will be on hand to show the garden. There may even be a lemonade stand!**

**This garden is next to the historic 1785 West Parish Burying Ground.**

**Parking is not easy on busy River St and there is construction across the street. Park near Wellington Pk and walk.**



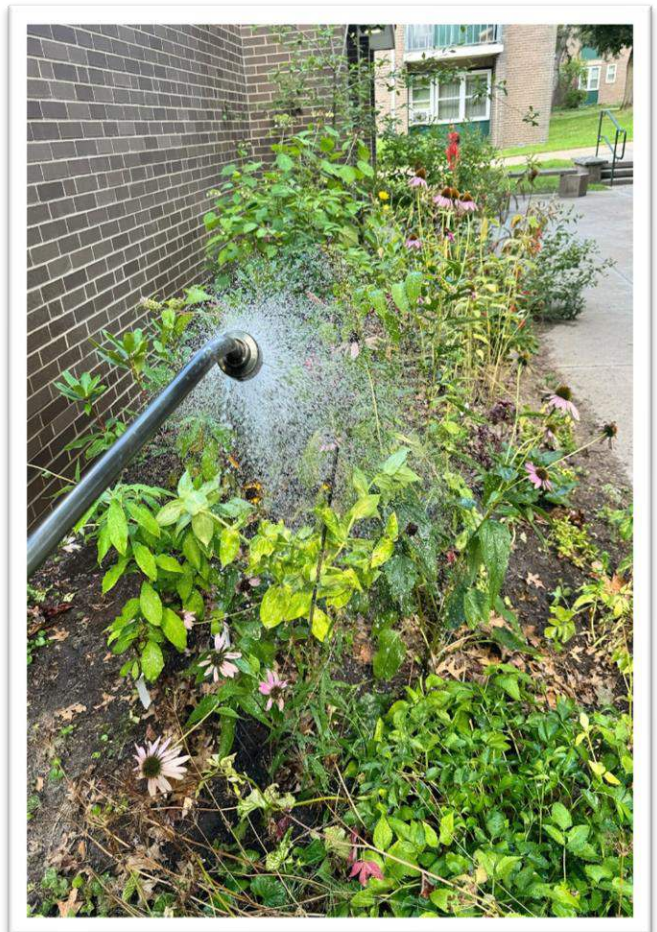
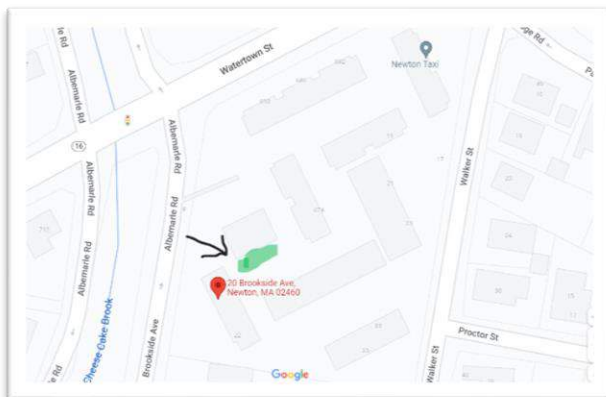
## 4 Brookside Avenue, Newtonville Newton Housing Authority (NHA) Horace Mann Community Center Garden *Host: Susan Vaughn*

The Pollinator Garden at Newton Housing Authority (NHA) Horace Mann complex in Newtonville is a community project imagined and realized through the joint efforts of Newton Neighbors Helping Neighbors, the NHA, Newton Community Pollinators Project and Newton Community Farm.

In May 2022, a group of volunteers from Newton Neighbors and Newton Community Pollinator Project got their hands dirty preparing and planting an unused grassy/weedy area behind the NHA Horace Mann community center. In the last two years, the garden has been jointly maintained by volunteers from Newton Neighbors, Newton Community Pollinator Project, and residents of the Horace Mann complex; and financially supported by the NHA.

Besides being unique for the broad community that created and continues to support this garden, it is one of the few examples of a pollinator garden that is growing in a part shade location. It is a great example of native plants that will do well in this environment.

The easiest parking is on Brookside Ave (please do not park in the NHA parking lot). Because Brookside is one way (in part) it is best to approach from Washington Street. Once there you will see the brick buildings that make up the Horace Mann Complex. The Community Center is to the right of a small parking lot and the pollinator garden is behind it. See below for a picture of the location & how this garden has grown from its humble beginnings in 2022.

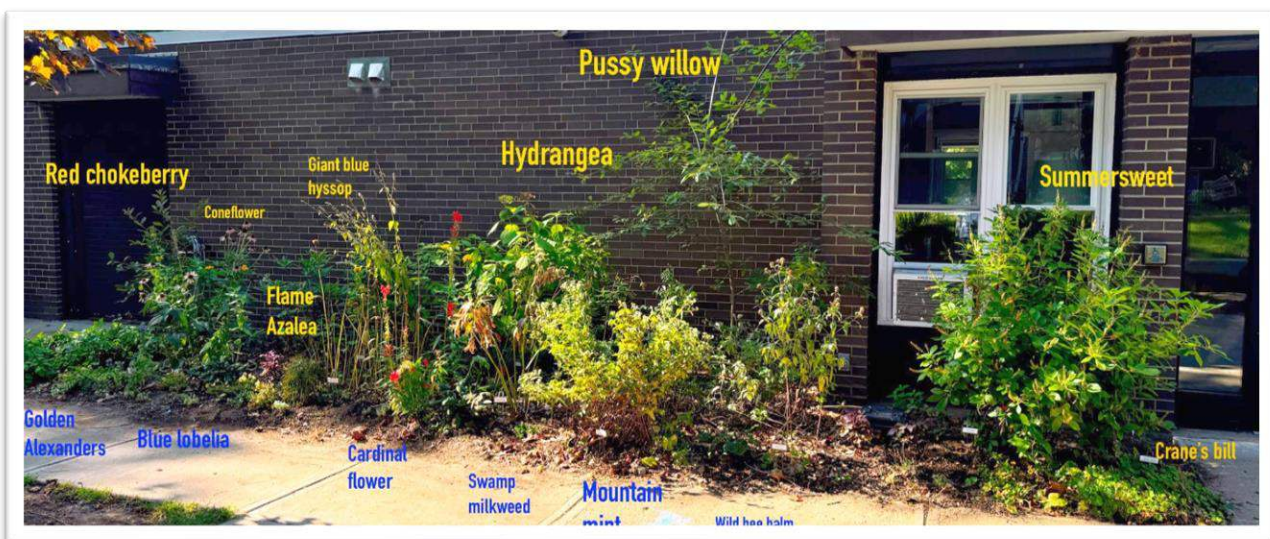


2022

2024

**4 Brookside Avenue, Newtonville**  
**Newton Housing Authority (NHA)**  
**Horace Mann Community Center Garden**  
*Host: Susan Vaughn*

Common name	Latin Name	bloom	ht	spacing	qty
Swamp Milkweed	<i>Asclepias incarnata</i>	summer	24-48"	12-24"	3
Cardinal Flower	<i>Lobelia cardinalis</i>	late summer	24-36"	8-12"	3
Wild Bee Balm	<i>Monarda fistulosa</i>	summer	36-60"	12-18"	3
Mountain Mint	<i>Pycnanthemum muticum</i>	late summer	36-48"	12-36"	3
White Wood Aster	<i>Aster divaricatus</i>	fall	12-36"	18-24"	3
Golden Alexanders	<i>Zizia aurea</i>	late spring	12-30"	10-14"	3
Spicebush	<i>Lindera benzoin</i>	spring	6-12'	6'	1
Flame Azalea	<i>Rhododendron calendulaceum</i>	summer	4-8'	8'	1
Summersweet	<i>Clethra alnifolia</i>	summer	4-8'	4-5'	1
Pussy Willow	<i>Salix discolor</i>	spring	5-15'	5'	1
Red chokeberry	<i>Aronia arbutifolia "Brilliantissima"</i>	spring	5-12'	4'	1
Running Groundsel	<i>Packera obovata</i>	spring	3-6"	1'	2
Wild Blue Phlox	<i>Phlox Divaricata</i>	late spring	1' - 2'	1'	3
Great Blue Lobelia	<i>Lobelia siphilitica</i>	late summer	1' - 4'	1'	3
Blue-stemmed Goldenrod	<i>Solidago caesia</i>	late summer/fall	2' - 3'	1'	2
Spiderwort	<i>Tradescantia</i>	spring	2-3'	1'	3
Jacob Kline Bee Balm	<i>Monarda didyma 'Jacob Kline'</i>	summer/early fall	4-5'	1-2'	3
Blue Giant Hyssop	<i>Agastache foeniculum</i>	summer/early fall	2-4'	1'	3
Purple Coneflower	<i>Echinacea Purpurea</i>	spring/fall	2-4'	1'	3
Canada Wild Ginger	<i>Asarum canadensis</i>	spring	4-8"	4-8"	
Jacob's Ladder	<i>Polemonium reptans</i>	spring	1'	1'	
American Spikenard	<i>Aralia racemosa</i>	summer	2-6'	3'	
Purple Creeping Phlox	<i>Phlox stolonifera</i>	summer	6-12"	1'	
Lance-Leafed Loosestrife	<i>Lysimachia lanceolata</i>	summer	1-2'	1-2'	
Wild Hydrangea	<i>Hydrangea arborescens</i>	spring/fall	4-5'	4-5'	
Spotted Crane's bill	<i>Geranium maculatum</i>	spring	12-18"	1'	





# 15 Roberts Avenue, Newtonville

Host: Emily Dahl



This small yard has been newly converted from lawn and concrete-paved surfaces to a native plant garden, with a focus on keystone and pollinator-friendly species. The homeowners sourced plants from Garden in the Woods, Blue Stem Natives, and Weston Nurseries—working with native plant expert Trevor Smith of Weston Nurseries on a large portion of the project. Despite its small size, the garden contains more than 40 species of perennials and nearly 30 species of shrubs and trees. This year, spicebush swallowtails, monarchs, multiple bee and other insect species, and various birds have been visiting.

## PERRENNIALS

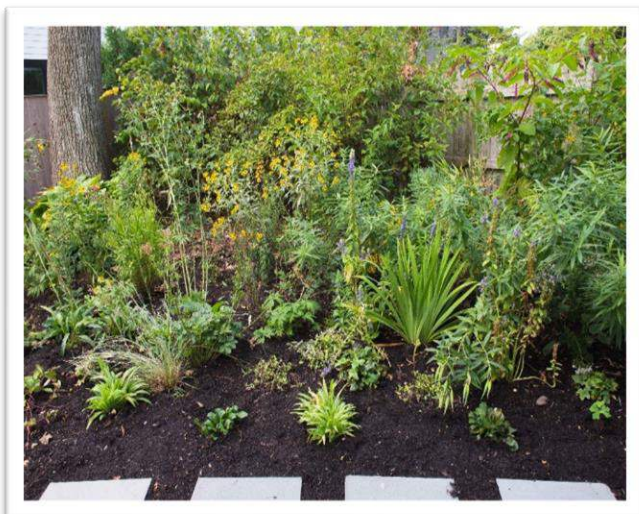
Family	Common name	Genus and species	Native
Apiaceae	Golden Alexanders	<i>Zizia aurea</i>	x
Apocynaceae	Swamp Milkweed	<i>Asclepias incarnata</i>	x
Apocynaceae	Common Milkweed	<i>Asclepias syriaca</i>	x
Apocynaceae	Butterfly Weed	<i>Asclepias tuberosa</i>	x
Asparagaceae	Northern Yucca	<i>Yucca filamentosa</i>	x
Asteraceae	Woodland Sunflower	<i>Helianthus divaricatus</i>	x
Asteraceae	Orange Coneflower 'Little Goldstar'	<i>Rudbeckia fulgida</i> var. <i>sullivantii</i> 'Little Goldstar'	x
Asteraceae	Blue-stemmed Goldenrod	<i>Solidago caesia</i>	x
Asteraceae	New York Aster	<i>Aster novi-belgii</i> (or <i>Symphyotrichum novi-belgii</i> )	x
Asteraceae	Bigleaf Aster	<i>Eurybia macrophylla</i>	x
Asteraceae	New England Aster	<i>Aster novae-angliae</i> (or <i>Symphyotrichum novae-angliae</i> )	x
Asteraceae	Northern Blazing Star	<i>Liatris scariosa</i>	x
Asteraceae	Dense Blazing Star	<i>Liatris spicata</i>	x
Asteraceae	Ironweed	<i>Vernonia</i> spp.	x
Asteraceae	White Snakeroot	<i>Ageratina altissima</i>	x
Asteraceae	Cutleaf Coneflower	<i>Rudbeckia laciniata</i>	x
Asteraceae	Heath Aster 'Snow Flurry'	<i>Aster ericoides</i> 'Snow Flurry' (or <i>Symphyotrichum ericoides</i> 'Snow')	x
Asteraceae	Joe-pye Weed	<i>Eutrochium purpureum</i>	x
Asteraceae	Plantain-leaved Pussytoes	<i>Antennaria plantaginifolia</i>	x
Geraniaceae	Wild Geranium	<i>Geranium maculatum</i>	x
Iridaceae	Dwarf Crested Iris	<i>Iris cristata</i>	x
Iridaceae	Blue Flag Iris	<i>Iris versicolor</i>	x
Lamiaceae	Scarlet Beebalm	<i>Monarda didyma</i>	x
Lamiaceae	Blue Giant Hyssop	<i>Agastache foeniculum</i>	
Lamiaceae	Hairy Mountain-mint	<i>Pycnanthemum verticillatum</i>	x
Plantaginaceae	Foxglove Beardtongue	<i>Penstemon digitalis</i>	x
Plantaginaceae	Turtlehead	<i>Chelone glabra</i>	x
Poaceae	Little Bluestem	<i>Schizachyrium scoparium</i>	x
Poaceae	Sea Oats	<i>Chasmanthium latifolium</i>	x
Polemoniaceae	Creeping Phlox	<i>Phlox stolonifera</i>	x
Polemoniaceae	Garden Phlox	<i>Phlox paniculata</i>	x
Ranunculaceae	Black Cohosh	<i>Cimicifuga racemosa</i> (or <i>Actaea racemosa</i> )	x
Ranunculaceae	Foamflower	<i>Tiarella cordifolia</i>	x
Ranunculaceae	Early Meadow Rue	<i>Thalictrum dioicum</i>	x
Ranunculaceae	Canada Anemone	<i>Anemone canadensis</i>	x
Ranunculaceae	Tall Thimbleweed	<i>Anemone virginiana</i>	x
Ranunculaceae	Hellebore	<i>Helleborus</i> spp.	
Ranunculaceae	Eastern Red Columbine	<i>Aquilegia canadensis</i>	x
Ranunculaceae	Bowman's Root	<i>Gillenia trifoliata</i> (or <i>Porteranthus trifoliatus</i> )	x
Rosaceae	Siberian Barren Strawberry	<i>Waldsteinia ternata</i>	
Verbenaceae	Blue Vervain	<i>Verbena hastata</i>	x
Violaceae	Labrador Violet	<i>Viola labradorica</i>	x

# 15 Roberts Avenue, Newtonville

Host: Emily Dahl

## TREES & SHRUBS

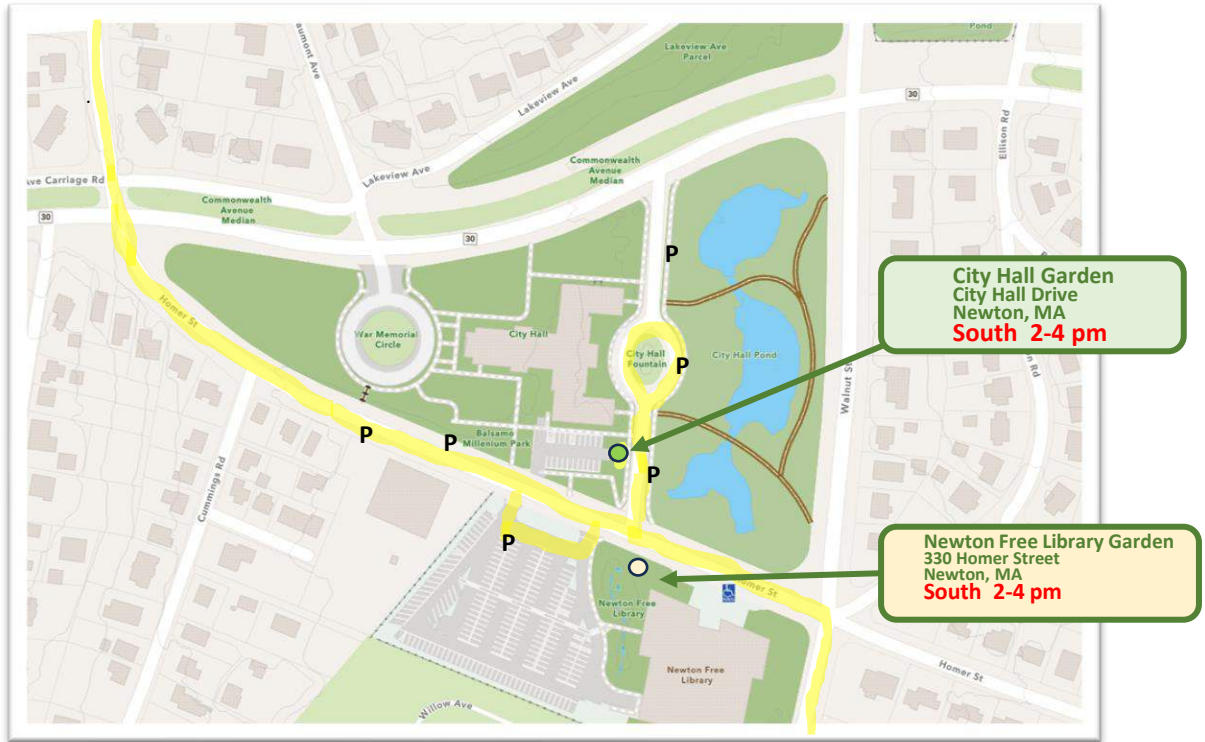
Family	Common name	Genus and species	Native
Aquifoliaceae	American holly	<i>Ilex opaca</i>	X
Aquifoliaceae	Inkberry	<i>Ilex glabra</i>	X
Araliaceae	American cranberry bush	<i>Viburnum trilobum</i>	X
Betulaceae	Eastern redbud	<i>Cercis canadensis</i>	X
Cornaceae	Red twig dogwood	<i>Cornus sericea</i>	X
<i>Ericaceae</i>	<i>Drooping leucothoe</i>	<i>Leucothoe fontanesiana</i>	
Ericaceae	Rhododendron	<i>Rhododendron</i> spp.	X
Ericaceae	Pink shell azalea	<i>Rhododendron vaseyi</i>	X
Fagaceae	White oak	<i>Quercus alba</i>	X
Hamamelidaceae	Witch hazel	<i>Hamamelis virginiana</i>	X
Hamamelidaceae	Dwarf fothergilla	<i>Fothergilla gardenii</i>	X
Lauraceae	Sassafras	<i>Sassafras albidum</i>	X
Lauraceae	Spicebush	<i>Lindera benzoin</i>	X
<i>Oleaceae</i>	<i>White fringetree</i>	<i>Chionanthus virginicus</i>	
<i>Philadelphaceae</i>	<i>Mock-orange</i>	<i>Philadelphus coronarius</i>	
Pinaceae	Eastern white pine	<i>Pinus strobus</i> "green wave"	X
Pinaceae	Eastern red cedar	<i>Juniperus virginiana</i>	X
Rosaceae	Gingergold apple	<i>Malus domestica</i> 'Gingergold'	
Rosaceae	Ninebark	<i>Physocarpus opulifolius</i>	X
Rosaceae	Serviceberry	<i>Amelanchier</i> spp.	X
<i>Rosaceae</i>	<i>Weigela</i>	<i>Weigela florida</i>	
Rosaceae	Black chokeberry	<i>Aronia melanocarpa</i>	X
Rhamnaceae	New Jersey tea	<i>Ceanothus americanus</i>	X
Rubiaceae	Buttonbush	<i>Cephalanthus occidentalis</i>	X
Sapindaceae	Silver maple	<i>Acer saccharinum</i>	X
<i>Sapindaceae</i>	<i>Bottlebrush buckeye</i>	<i>Aesculus parviflora</i>	



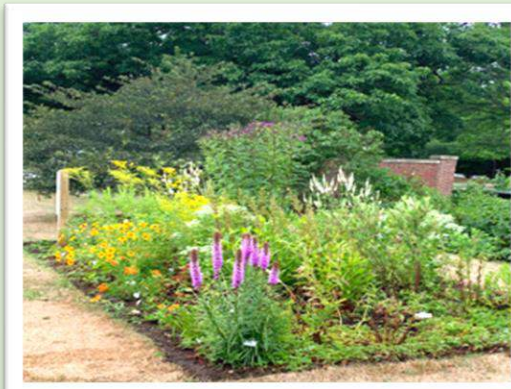
# Newton City Hall Drive, Newton Center City Hall Pollinator Garden

Host: Beth Wikinson

- \* A wonderful native plant demonstration garden installed by Beth Wilkinson & Mark Feldhusen
- \* Lots of parking around City Hall or at the Library
- \* Also check out the extensive Pollinator Garden across Homer Street outside the Newton Free Library



## Newton City Hall Pollinator Garden



### City Hall Demonstration Pollinator Garden

The demo garden, established in 2021, provides food and habitat for pollinators throughout our growing seasons.

Learn more about the importance of native pollinators, choosing plants for your own garden. and more by scanning this code.



## Native Pollinator Plants in the City Hall Garden

### Latin Name

### Common Name

#### Shrubs (in bloom order)

<i>Salix discolor</i>	Pussy willow
<i>Swida sericea</i>	Red-twig dogwood
<i>Aronia arbutifolia</i>	Red chokeberry
<i>Clethra alnifolia</i>	Summersweet
<i>Ceanothus americanus</i>	New Jersey tea
<i>Vaccinium angustifolia</i>	Lowbush blueberry

#### Spring Flowering Plants

<i>Fragaria virginiana</i>	Wild strawberry
<i>Geranium maculatum</i>	Wild geranium
<i>Penstemon digitalis</i>	Foxglove beardtongue
<i>Viola pedata</i> or <i>sororia</i>	Common violet

#### Summer Flowering Plants

<i>Asclepias incarnata</i>	Swamp milkweed
<i>Asclepias tuberosa</i>	Butterfly milkweed
<i>Eutrochium purpureum</i>	Joe Pye weed
<i>Liatris spicata</i>	Blazing star
<i>Liatris novae-angliae</i>	New England blazing star
<i>Monarda didyma</i>	Bee balm
<i>Monarda fistulosa</i>	Wild bergamot
<i>Monarda punctata</i>	Spotted bee balm
<i>Pycnathemum muticum</i>	Mountain mint
<i>Solidago speciosa</i>	Showy goldenrod
<i>Verbena hastata</i>	Blue vervain
<i>Vernonia noveboracensis</i>	New York ironweed
<i>Veronicastrum virginicum</i>	Culver's root

#### Fall Flowering Plants

<i>Chelone glabra</i>	White turtlehead
<i>Eurybia macrophylla</i>	Large-leaved aster
<i>Rudbeckia triloba</i>	Brown-eyed Susan
<i>Solidago odora</i>	Sweet goldenrod
<i>Solidago caesia</i>	Blue-stemmed goldenrod
<i>Symphotrichum novae-angliae</i>	New England aster

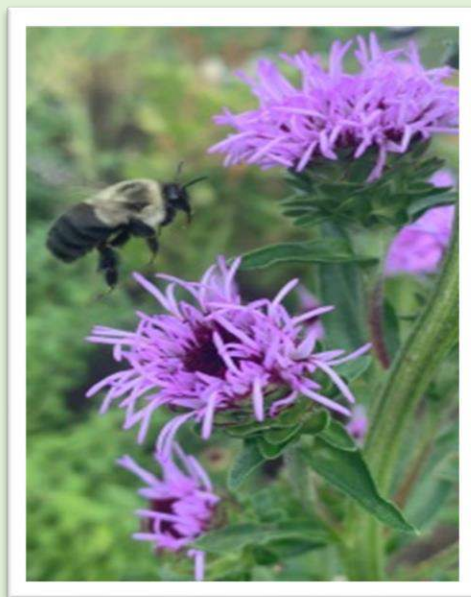
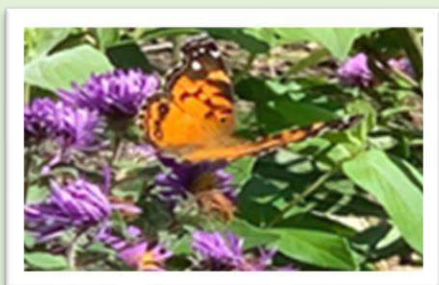
## Introduction to online Newton Pollinator Toolkit

Our environment is at risk because of precipitous declines in habitat, native plants and the insects, birds, and other animals that depend on those plants. The pollinators that are an essential part of making the whole system work are in serious decline. This pollinator toolkit contains information about the problem and some easy steps you can take to help alleviate it—while creating a fascinating and vibrant garden at the same time. The toolkit focuses exclusively on **native plants** that attract pollinators.

Native plants are important because they co-evolved with the creatures that pollinate them. Non-native species, which are most of the plants you find at most nurseries, don't provide the same high-quality resources for the pollinators—and often do not even attract them. Pollinators help plants to reproduce and, in turn, are fed by those plants and then provide food for birds and other animals. This cross-fertilization provided by pollinators results in the genetic biodiversity necessary for a healthy planet.

The popular book *Nature's Best Hope*, written by wildlife ecology professor Douglas Tallamy, is subtitled *A New Approach to Conservation That Starts in Your Yard*. Dr. Tallamy explains that we should make our yards into parts of a collective wildlife web, or network, to provide the wildlife habitat that is vanishing throughout the world. "Envision your property," he writes, "as one small piece of a giant puzzle, which, when assembled, has the potential to form a beautiful ecological picture . . . In the past, we have asked one thing of our gardens: that they be pretty. Now they have to support life, sequester carbon, feed pollinators and manage water. We can work together to be "Nature's Best Hope" by creating native plant gardens that support the pollinators we need."

Follow this link to read more:



**11 Homer Street, Newton Center  
Newton Free Library  
Native Pollinator Garden**

**Hosts: Ann Dorfman and others**

**LIBRARY PLANT LIST, as of 1/28/2022**

Qty.	Latin Name	Common Name	Column1	Column2
<b>Shrubs</b>				
11	<i>Aronia arbutifolia 'Brillantissima'</i>	RED CHOKEBERRY	Eastern N American Native	Cultivar
3	<i>Comus racemosa</i>	GRAY DOGWOOD	Eastern N American Native	
28	<i>Comus sericea 'Arctic Fire'</i>	RED OSIER DOGWOOD	North American Native	Cultivar
24	<i>Diervilla X 'Kodiak Orange'</i>	KODIAK ORANGE DIERVILLA	North American Native	Hybrid
6	<i>Hamamelis virginiana</i>	AMERICAN WITCHHAZEL	Eastern N American Native	
34	<i>Ilex glabra 'Compacta'</i>	COMPACT INKBERRY	North American Native	Cultivar
29	<i>Myrica pennsylvanica</i>	NORTHERN BAYBERRY	Northeast American Coast Native	
<b>Perennials, Grasses, Groundcovers</b>				
216	<i>Amsonia tabernaemontana 'Blue Ice'</i>	BLUE STAR AMSONIA	Non-native	Cultivar
32	<i>Andropogon gerardii</i>	BIG BLUESTEM	Eastern N American Native	
260	<i>Asclepias tuberosa</i>	BUTTERFLY MILKWEED	Eastern N American Native	
11	<i>Aster novae-angliae 'Purple Dome'</i>	NEW ENGLAND ASTER 'Purple	Eastern N American Native	Cultivar
601	<i>Carex pensylvanica</i>	PENNSYLVANIAN SEDGE	Eastern N American Native	
38	<i>Coreopsis lanceolata 'Moonbeam'</i>	WHORLED TICKSEED	Southeastern North American Native	Cultivar
235	<i>Deschampsia flexuosa</i>	WAVY HAIR GRASS	Eastern N American Native	
30	<i>Gaultheria procumbens</i>	WINTERGREEN	Eastern N American Native	
394	<i>Iris versicolor</i>	BLUE FLAG IRIS	Northeastern North American Native	
315	<i>Liatris Spicata</i>	DENSE BLAZING STAR	Southeastern North American Native	
21	<i>Lobelia cardinalis</i>	CARDINAL FLOWER	Eastern N American Native	
53	<i>Molinia caerulea</i>	PURPLE MOOR GRASS	Non-native	
78	<i>Monarda fistulosa</i>	WILD BERGAMOT/BEE BALM	Eastern N American Native	
51	<i>Oenothera fruticosa</i>	EVENING PRIMROSE	Eastern N American Native	
186	<i>Panicum virgatum</i>	SWITCH GRASS	North American Native	
532	<i>Rudbeckia fulgida var. Deamii 'American Goldr</i>	BLACK-EYED SUSAN	Eastern North American Native	Cultivar
398	<i>Schizachyrium scoparium</i>	LITTLE BLUESTEM	North American Native	
29	<i>Solidago speciosa</i>	SHOWY GOLDENROD	Eastern N American Native	
765	<i>Waldsteinia fragarioides</i>	BARREN STRAWBERRY	Eastern N American Native	
	<i>Phytolacca americana</i>	AMERICAN POKEWEED	Eastern N American Native	

\* Proposed in 2021

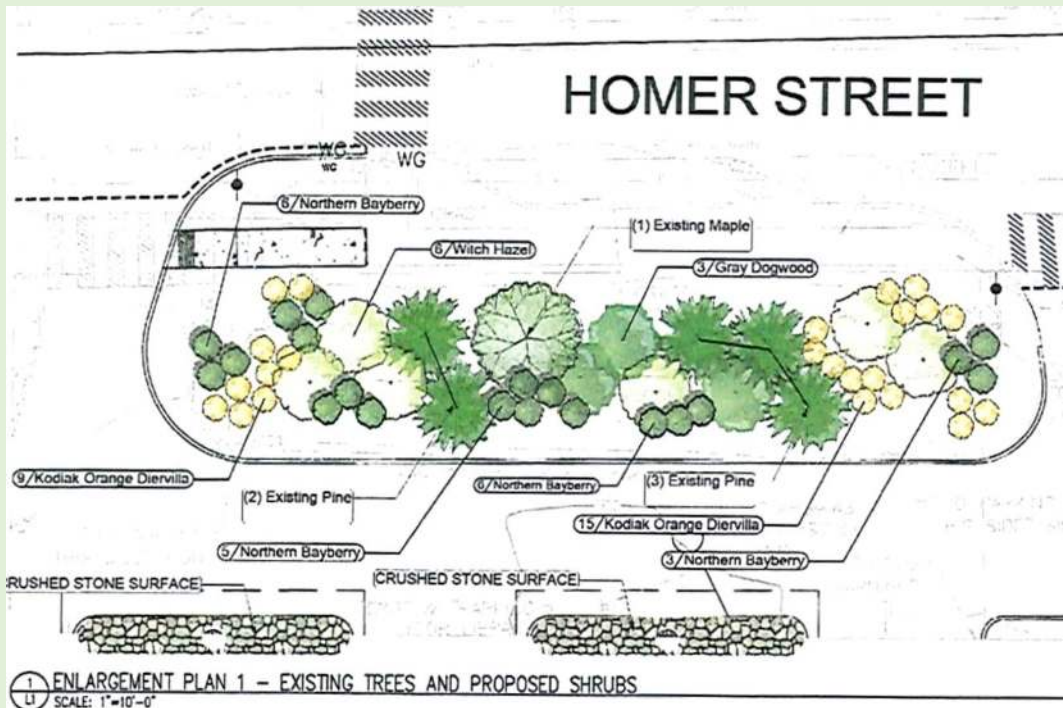
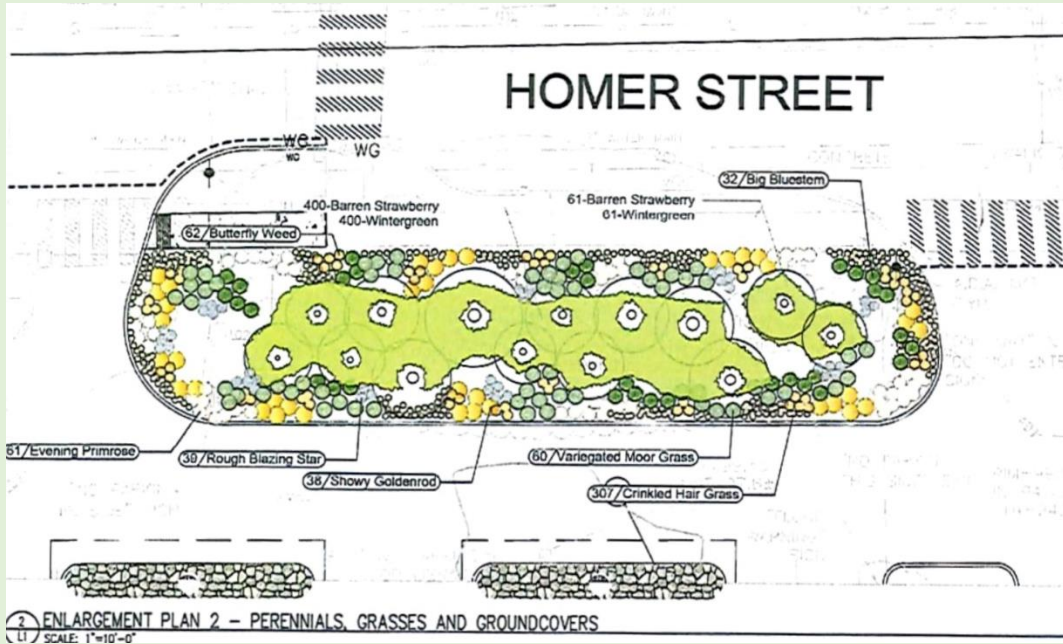
\* The plant list and renderings are from the original proposal for the Newton Free Library site.

\* The actual garden may differ from the proposal plans.

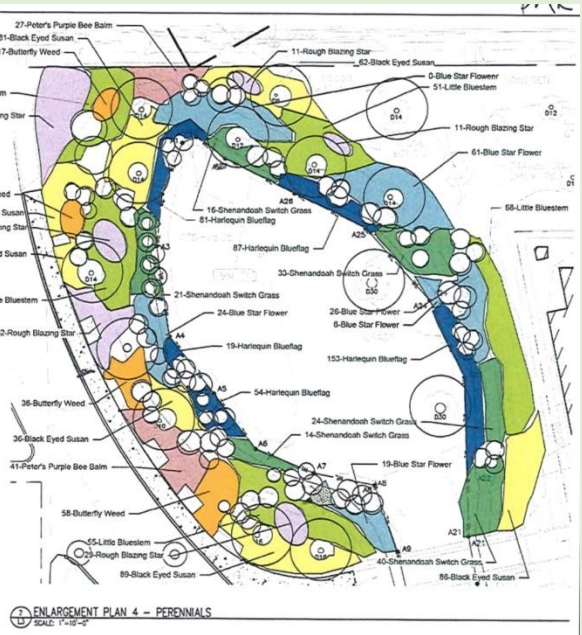
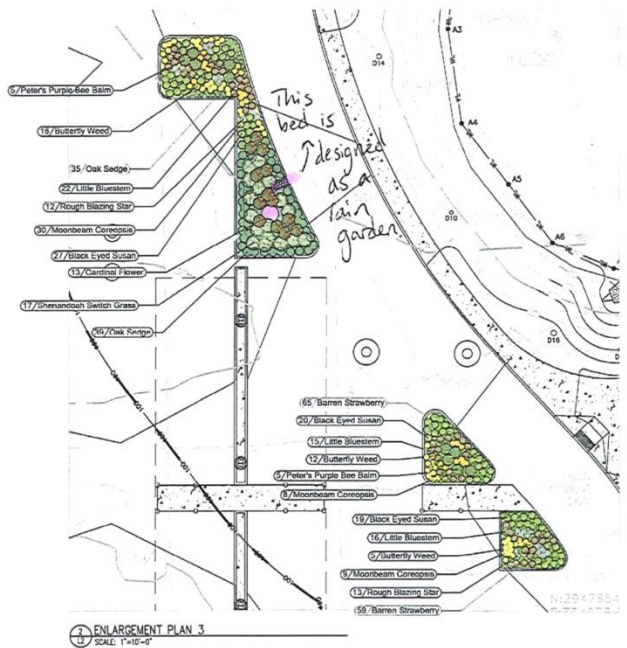
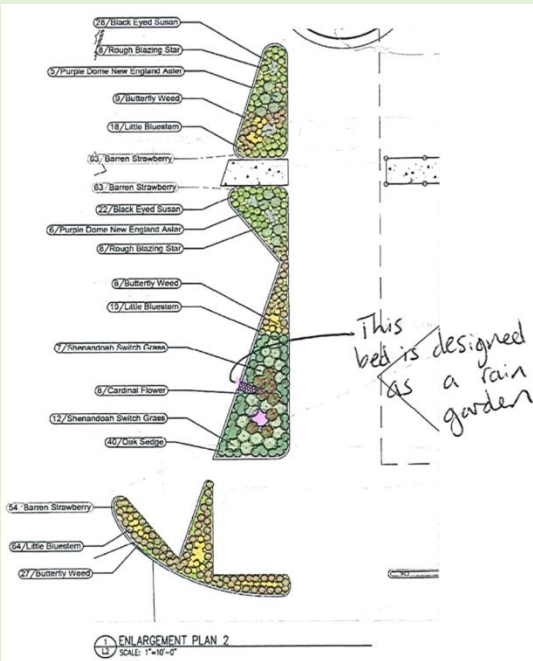
\* See the following two pages for the garden site plans.

\* Lots of parking around City Hall or in the Library parking lot.

# Newton Free Library Native Pollinator Garden



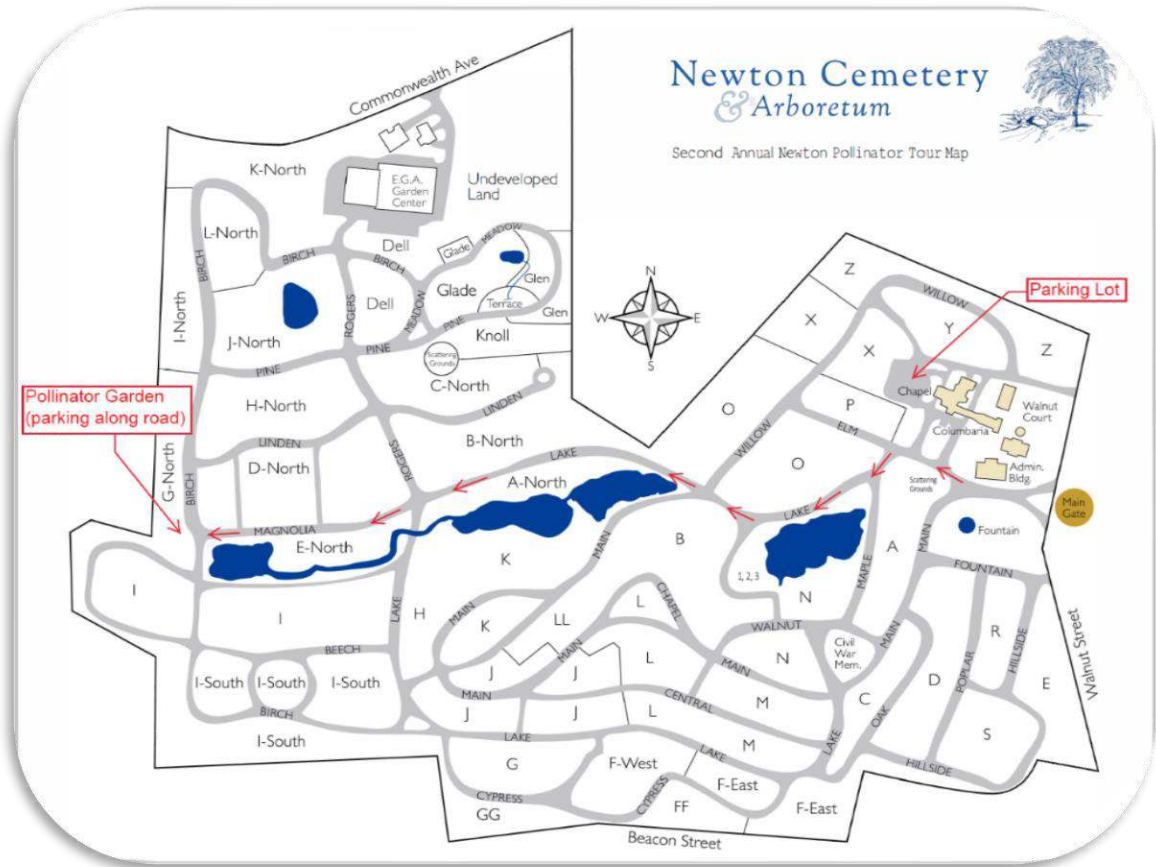
# Newton Free Library Pollinator Garden





# 791 Walnut Street, Newton Center Newton Cemetery & Arboretum

The Newton Cemetery & Arboretum Pollinator Garden located on the western border of the cemetery was completed in 2020 by The Friends of Newton Cemetery through a grant from the Bayer Feed a Bee initiative. The garden replaced open turf area and a planted shrub bed with over 30 species of US native pollinator plants. Full-sun loving plants were selected for their drought resistance for a water conscious planting of Rudbeckia, Lobelia, Monarda, Amsonia and many more. The garden is marked by a plaque made possible by a grant from The Newton Conservators. And in 2023 more plaques were installed to aid in plant identification throughout the garden. Enter at 791 Walnut St main entrance. Stop by the office for a map if necessary and follow the directional signs in the Cemetery to the Pollinator Garden.



**Watch for directional signage to the garden once inside the Cemetery Gate!**



[Map & Plant List](#)

# 791 Walnut Street, Newton Center Newton Cemetery & Arboretum



## Newton Cemetery & Arboretum

<b>Botanical</b>	<b>Name</b>	<b>Common Name</b>
Aesculus	parviflora	Bottlebrush Buckeye
Agastache	foeniculum	Anise Hyssop
Agastache	foeniculum	Giant Hyssop
Amsonia	hubrichtii	Hubricht's Bluestar
Asclepias	syriaca	Common milkweed
Asclepias	tuberosa	Butterfly milkweed
Chamaecyparis	obtusa	Hinoki Cypress
Chrysogonum	virginiana	Green and gold
Echinacea	'magnus'	Cone Flower Magnus
Echinacea	purpurea	White Swan Cone Flower
Echinacea	purpurea	Cone Flower Prairie Splendor
Epilobium	coloratum	Purple-leaved Willow-Herb
Eragrostis	spectabilis	Purple Love Grass
Eupatorium	perfoliatum	American Boneset
Eutrochium	dubium Little Joe	Little Joe Pye Weed
Eutrochium	purpureum	Joe Pye Weed
Hypericum	x hidcoteense	Hidcote' St John's Wort
Liatris	spicata	Blazing Star Liatris
Lindera	benzoin	Spicebush
Lobelia	siphilitica	Blue Lobelia
Monarda	bradburiana	Eastern Beebalm
Monarda	didyma	Raspberry Beebalm
Monarda	punctata	Dotted Beebalm
Myrica	pennsylvanica	Northern Bayberry
Nigella	damascena	Love-In-a-mist
Panicum	virgatum	Panic Grass
Penstemon	hirsutus	Hairy Beardtongue
Physostegia	virginiana	Obedient Plant
Pycnanthemum	muticum	Clustered Mountain Mint
Rudbeckia	laciniata	Rudbeckia Autumn Sun
Solidago	canadensis	Canada Goldenrod
Verbena	hastata	Blue Vervain

# 32 Garland Road, Newton Center

*Host: Jon Regosin*

Our garden tends toward the wild side and includes planted species such as Wild Lupine and plants that have arrived on their own such as White Wood Aster. Woody debris, bare soil, brown stems, compost, and other decaying organic matter provide important habitat for insects and other wildlife. A vegetable garden provides additional habitat. During this time of year, many goldenrod and aster are in bloom.

Over 330 species of plants and animals have been documented to use the land, excluding planted species. This includes 39 bee species, including the recently documented Cloudy-winged Mining Bee and Hairy-banded Mining Bee, two goldenrod specialists.

Plant List including cultivated and wild plants

Wild Plants and Animals (excludes known plantings)



# 32 Garland Road, Newton Center

Host: Jon Regosin

Common Name	Scientific Name	<a href="https://www.inaturalist.org/observations/">https://www.inaturalist.org/observations/</a>
annual fleabane	<i>Erigeron annuus</i>	124726163
white vervain	<i>Verbena urticifolia</i>	124737707
Creeping Bellflower	<i>Campanula rapunculoides</i>	125094688
white clover	<i>Trifolium repens</i>	125094848
Black Medick	<i>Medicago lupulina</i>	125096198
common toadflax	<i>Linaria vulgaris</i>	127521977
green carpetweed	<i>Mollugo verticillata</i>	127522580
upright yellow woodsorrel	<i>Oxalis stricta</i>	127522922
eastern black nightshade	<i>Solanum emulans</i>	127536948
bedstraws	<i>Galium</i>	127537057
giant goldenrod	<i>Solidago gigantea</i>	127539432
Spotted spurge	<i>Euphorbia maculata</i>	128027837
Beggarticks	<i>Bidens</i>	133509800
tall goldenrod	<i>Solidago altissima</i>	133513425
mouse-ear cress	<i>Arabidopsis thaliana</i>	154550445
mouse-ear cress	<i>Arabidopsis thaliana</i>	156456127
common blue violet	<i>Viola sororia</i>	157849902
Common mouse-ear chickweed	<i>Cerastium fontanum</i>	162033860
Hedge Bedstraw	<i>Galium mollugo</i>	166411476
clasping Venus's looking glass	<i>Triodanis perfoliata</i>	167036489
Hedge mustard	<i>Sisymbrium officinale</i>	167036638
straw-colored flatsedge	<i>Cyperus strigosus</i>	179215382
White Wood Aster	<i>Eurybia divaricata</i>	188268474
Common Blue Wood Aster	<i>Symphotrichum cordifolium</i>	188268570
carpet bugle	<i>Ajuga reptans</i>	214591426
ground-ivy	<i>Glechoma hederacea</i>	214591499
thyme-leaved speedwell	<i>Veronica serpyllifolia</i>	214591810
cinnamon fern	<i>Osmundastrum cinnamomeum</i>	214639862
Philadelphia fleabane	<i>Erigeron philadelphicus</i>	225546598
Creeping Bellflower	<i>Campanula rapunculoides</i>	226917891
sweet fern	<i>Comptonia peregrina</i>	237143806
tall blue wild indigo	<i>Baptisia australis</i>	237143851
white snakeroot	<i>Ageratina altissima</i>	237143915
purple coneflower	<i>Echinacea purpurea</i>	237143966
cup plant	<i>Silphium perfoliatum</i>	237144063
butterfly milkweed	<i>Asclepias tuberosa</i>	237144242
common evening-primrose	<i>Oenothera biennis</i>	237144297
Oregano	<i>Origanum vulgare</i>	237144602
tall goldenrod	<i>Solidago altissima</i>	237145407
garden sage	<i>Salvia officinalis</i>	237145731
New England blazing star	<i>Liatris novae-angliae</i>	237145886
showy goldenrod	<i>Solidago speciosa</i>	237146154
Indian blanket	<i>Gaillardia pulchella</i>	237146242
little bluestem	<i>Schizachyrium scoparium</i>	237146339
brambles	<i>Rubus</i>	237146884
southern arrowwood	<i>Viburnum dentatum</i>	237146940
apple	<i>Malus domestica</i>	237147055

Continued next page



# 32 Garland Road, Newton Center



Host: Jon Regosin

Plant List

Full Species List

Common Name	Scientific Name	<a href="https://www.inaturalist.org/observations/">https://www.inaturalist.org/observations/</a>
spearmint	<i>Mentha spicata</i>	237147217
red chokeberry	<i>Aronia arbutifolia</i>	237147780
Northern highbush blueberry	<i>Vaccinium corymbosum</i>	237147858
smooth Solomon's seal	<i>Polygonatum biflorum</i>	237148036
northern red oak	<i>Quercus rubra</i>	237148332
grapevines	<i>Vitis</i>	237148454
cut-leaf goldenrod	<i>Solidago arguta</i>	237149481
white oak	<i>Quercus alba</i>	237149796
Virginia creeper	<i>Parthenocissus quinquefolia</i>	237150001
black-eyed Susan	<i>Rudbeckia hirta</i>	237150490
sunflowers	<i>Helianthus</i>	237152022
white meadowsweet	<i>Spiraea alba</i>	238312250
sweet-fern	<i>Comptonia peregrina</i>	238312357
white oak	<i>Quercus alba</i>	238312457
Devil's Beggarticks	<i>Bidens frondosa</i>	238312587
boxelder	<i>Acer negundo</i>	238312655
Celandine Poppy	<i>Stylophorum diphyllum</i>	238329131
Sundial Lupine	<i>Lupinus perennis</i>	238329225
red columbine	<i>Aquilegia canadensis</i>	238329373
currants and gooseberries	<i>Ribes</i>	238329480
serviceberries	<i>Amelanchier</i>	238329659
winterberry holly	<i>Ilex verticillata</i>	238329737
Canada goldenrod	<i>Solidago canadensis</i>	238329846
northern spicebush	<i>Lindera benzoin</i>	238329903
cinnamon fern	<i>Osmunda strum cinnamomeum</i>	238329960
sensitive fern	<i>Onoclea sensibilis</i>	238330011
pin oak	<i>Quercus palustris</i>	238330170
silky dogwood	<i>Comus amomum</i>	238330562
American hophornbeam	<i>Ostrya virginiana</i>	238330626
red maple	<i>Acer rubrum</i>	238332023
oakleaf hydrangea	<i>Hydrangea quercifolia</i>	238332159
Canadian wild ginger	<i>Asarum canadense</i>	238333476
eastern bluestar	<i>Amsonia tabernaemontana</i>	238333591
plums, cherries, and allies	<i>Prunus</i>	238333724
great rhododendron	<i>Rhododendron maximum</i>	238333960
American spikenard	<i>Aralia racemosa</i>	238390001
Sweet Mock Orange	<i>Philadelphus coronarius</i>	238390172
Creeping Bellflower	<i>Campanula rapunculoides</i>	238390254
common evening-primrose	<i>Oenothera biennis</i>	238390415
meadow anemone	<i>Anemonastrum canadense</i>	238390479
sweet everlasting	<i>Pseudognaphalium obtusifolium</i>	238390585
black cohosh	<i>Actaea racemosa</i>	238390634
staghorn sumac	<i>Rhus typhina</i>	238390679
hairy white oldfield aster	<i>Symphotrichum pilosum</i>	239069344
New England aster	<i>Symphotrichum novae-angliae</i>	239069473
beardtongues	<i>Penstemon</i>	239708911
wild bergamot	<i>Monarda fistulosa</i>	239709316

# 11 Homer Street, Newton Center

## Trinity Parish Garden

*Host: Jane Galli and others*

This is the first year for Trinity Parish having a pollinator garden. We are just getting started with planting "pollinator-friendly" plants around a south-facing established row of hydrangeas and we are hoping to add more plants in other areas of the church grounds each coming season. So far, this is a list of our plantings:

- Native white turtlehead (*chelone glabra*, grows to 30" high)
- White turtlehead "pink select" (*chelone glabra* "pink select", grows to 30"-36" high)
- English lavender (*Lavandula angustifolia*, grows to 20" high)
- Bee Balm Balmy Pink (*Monarda didyma* "Balbalmink", grows to 12" high)
- Yarrow Milly Rock Rose (*Achillea millefolium* "Florachro1", grows to 12" high)
- Yarrow Pink Grapefruit (*Achillea* "Pink Grapefruit", grows to 29" high)
- Orange Butterfly weed (*Asclepia tuberosa*).
- Swamp milkweed-Ice Ballet (*Asclepias incarnata*, grows to 36-0" high) - This plant really took off, here in its first year! See the images of its white blooms, attracting bees in this photo taken in July.



# 1200 Beacon Street, Newton Highlands

## Cold Spring Park Native Pollinator Garden

*Host: Alan Noguee (Friends of Cold Spring Park)*

- \* A HOSTED pollinator garden (Alan Noguee, Friends of Cold Spring Park)
- \* A bee-centric garden (Dr. Gegeer recommended plants)
- \* This garden was installed as Boy Scout Eagle project of Dobi Wollaber
- \* Lots of parking to the left once inside the main entrance on Beacon Street





# Cold Spring Park Pollinator Garden Plant List

1200 Beacon St., Newton, MA 02461

Species were chosen from [Dr. Robert Gegear's plant list](#) based on his research on bumblebees and butterflies at risk of local extinction, with a few native volunteers allowed to remain. The 33 species will provide nectar and pollen from early spring to late fall.

Agastache foeniculum Anise hyssop volunteer	Carex pensylvanica Pennsylvania sedge	Monarda didyma Scarlet beebalm	Rosa Carolina Carolina rose
Agastache scrophularifolia Purple giant hyssop	Cercis canadensis Redbud tree	Monarda fistulosa Wild bergamot	Rubus odoratus Purple flowering raspberry
Asclepias incarnata Rose (swamp) milkweed	Doellingeria umbellata Flat-topped white aster	Penstemon digitalis Foxglove Beardtongue	Salix humilis Prairie willow
Asclepias tuberosa Butterfly milkweed	Eragrostis spectabilis Purple lovegrass	Penstemon hirsutus Hairy beardtongue	Schizachyrium scoparium Little bluestem
Astragalus canadensis Canadian milkvetch	Geranium maculatum Wild geranium	Physotegia virginiana Obedient plant Volunteer	Solidago caesia Bluestem goldenrod
Baptisia tinctoria Yellow wild indigo	Hypericum ascyron Great St. John's Wort Volunteer	Prunella vulgaris Self-heal	Solidago speciosa Showy goldenrod
Blephilia ciliata Downy wood-mint	Hypericum prolificum Shrubby St. John's Wort	Prunus maritima Beach plum	Spiraea alba White Meadowsweet
Blephilia hirsuta Hairy wood-mint	Lupinus perennis Wild lupine	Pycnanthemum tenuifolium Narrowleaf mountain mint Volunteer	Viola sororia Common blue violet  Zizia aurea Golden alexander

Plant list with links to pictures, descriptions, and sources: <https://coldspringpark.org/pollinator-garden-plant-list-and-design/>

Dr. Gegear's complete plant list:  
<https://gegearlab.weebly.com/plant-list.html>



Planting the garden was the Eagle Project of Dobi Wollaber, Troop 209. Co-sponsors: Friends of Cold Spring Park, Newton Dept. of Parks, Recreation & Culture, Green Newton, Newton Conservators.

Friends of Cold Spring Park, P.O. Box 610023, Newton Highlands, MA 02461  
<https://coldspringpark.org>



# The Cold Spring Park Pollinator Garden



Two (of at least 12) at-risk species supported  
Golden northern bumblebee  
(*Bombus fervidus*)



Indian skipper  
(*Hesperia sassacus*)

Newton's first public garden with plants chosen through research on saving bees and butterflies at risk of local extinction.



Located at the park entrance, in front of the tennis courts, the Cold Spring Park Pollinator garden includes 30 plant species that bloom from spring to fall.

Based on the research of UMass Dartmouth Professor Robert Gegear, these plants are preferred by two bumblebees and ten butterflies that were once common in Eastern Mass. but are now at risk of local extinction.

You can help save these important pollinators by planting some of the same plants in your own garden.





## Why a pollinator garden?

More than 85 percent of the plants in our environment depend on animals to reproduce successfully! Without these pollinators, our ecosystem would collapse.

Bumblebees are our most important local pollinator. We've already lost two of 11 species in Massachusetts and three more are imperiled.

Insects often feed only on certain plants. The best way to save them is to use the native plants they evolved with. (Examples on other side.)

Also, we can avoid pesticides, shrink lawns, and leave leaves and stems in the fall garden (so pollinators can nest in them over the winter.)

The Cold Spring Park Pollinator garden aims to preserve the pollination system: both the plants and the pollinators that need each other.

Planting the garden was the Eagle Scout project of DoBi Wollaber and Troop 209.



**Sponsored by:**

**Friends of Cold Spring Park  
Newton Dept. of Parks, Recreation & Culture  
Green Newton  
Newton Conservators  
DoBi Wollaber fundraiser**

Ten pollinator powerhouse plants (of 33 species in the garden) to provide at-risk bees pollen and nectar from Spring to Fall:

**Pollen**  
(shrubs)



Native willows (male)



Carolina rose



St. John's wort



Purple flowering raspberry



Meadowsweet

**Nectar**



Wood betony



Foxglove beardtongue



Wild bergamot



Self-heal



Purple giant hyssop

For the Cold Spring garden plant list, with links to pictures, descriptions, and sources, scan here:



For the complete list of Dr. Gegear's recommended plants:



For the Newton Community Pollinator Project Facebook page:



For the story of the Cold Spring garden-- what, why, and how-- scan here:



For the Newton Conservators' Pollinator Toolkit:



Join or volunteer with the Friends of Cold Spring Park:



**Visit the garden at  
Cold Spring Park,  
1094 Beacon Street,  
Newton, Mass.**

Friends of Cold Spring Park  
P.O. Box 610023  
Newton, MA 02461  
FriendsOfColdSpringPark@gmail.org  
www.coldspringpark.org

# 54 Lincoln Street, Newton Highlands

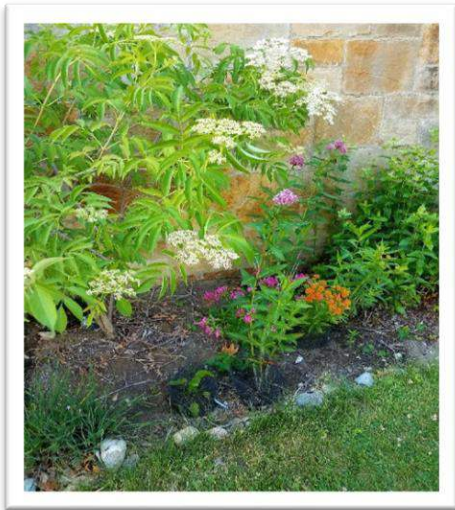
## Newton Highlands Congregational Church

*Host: Carol Hausner*

These gardens were added to the Tour to show the emerging accomplishment of a non-artistic, landless, non-gardener. Committed to growing native plants to achieve insects to support our native birds, I gained my Church's approval to turn turf into native plant gardens. Things improved as I learned more about plants (and people). At this location I have five beds started from scratch and two I've cleaned out and begun to shift; I'm now also growing plants at another location. I intend to show and discuss key plants and learnings rather than focus on any individual garden.

Common Name	Scientific Name	Comments
<b>The Rock Stars</b>		
Short-toothed mountain mint	<i>Pycnanthemum muticum</i>	Pollinator magnet, hardy
Hairy mountain mint	<i>Pycnanthemum verticillatum var. pilosum</i>	Pollinator magnet, hardy
Showy goldenrod	<i>Solidago speciosa</i>	Bumblebees love it, stunning (best Chelsea chopped)
Zig Zag goldenrod	<i>Solidago flexicaulis</i>	Bees love it, stunning, grows in shade
Bluestem goldenrod	<i>Solidago caesia</i>	Bees love it, stunning
Swamp/rose milkweed	<i>Asclepias incarnate</i>	Pretty, easy to grow, Monarch caterpillar host
Butterfly weed	<i>Asclepias tuberosa</i>	Hardy, visual appeal
Grass-leaved Goldentop	<i>Euthamia graminifolia</i>	Bees love it, stunning
New England aster	<i>Symphotrichum novae-angliae i</i>	Bees love it, stunning (best Chelsea chopped)
Coneflower	<i>Echinacea sp.</i>	Food for American Goldfinch babies
Anise hyssop	<i>Agastache foeniculum</i>	Bees love it, low maintenance, visual interest
"Autumn Joy" Stonecrop	(non-native)	Bees love it, low maintenance, visual interest
Pussy toes	<i>Antennaria plantaginifolia</i>	Drought tolerant, American Beauty caterpillar host
Little Blue Stem	<i>Schizachyrium scoparium</i>	Drought tolerant, host for multiple caterpillar species
Jerusalem artichoke	<i>Helianthus tuberosus</i>	Bees love it, low maintenance, visual interest
Zinnia - not native	(non-native)	Bumblebees love it, visual interest
<b>Other</b>		
Coreopsis	<i>Coreopsis sp.</i>	Attractive, easy
Common Hackberry	<i>Celtis occidentalis</i>	Berries for birds
Blazing Star	<i>Liatis spicata</i>	Bees like it
Honewort	<i>Cryptotaenia canadensis</i>	Shade loving, native bee supporting
False aster	<i>Boltonia asteroides</i>	Pollinator supporting
Violets	<i>Viola sororia</i>	Pollinator supporting
Black Elderberry	<i>Sambucus canadensis</i>	Berries for migrating birds
Bee balm	<i>Monarda fistulosa</i>	Bees like it
Jacob's Ladder	<i>Polemonium reptans</i>	Not doing much
Purple-stemmed aster	<i>Symphotrichum puniceum</i>	Expect to be pollinator supporting
Low sumac	<i>Rhus aromatica</i>	Goal was berries for birds; have two males
Showy Tick Trefoil	<i>Desmodium canadense</i>	Bloomed for first time this year
Prairie dropseed	<i>Sporobolus heterolepis</i>	Easy to grow; doing little
King Solomon's seal	<i>Polygonatum biflorum</i>	Supposed to support pollinators
Flat-topped asters	<i>Aster Umbrellatus</i>	Pollinator supporting; host plant for certain butterfly caterpillars

54 Lincoln Street, Newton Highlands  
Newton Highlands Congregational Church  
Host: Carol Hausner



# 54 Lincoln Street, Newton Highlands

## Newton Highlands Congregational Church

*Host: Carol Hausner*

### Gardens at Newton Highlands Congregational Church, 54 Lincoln St., Newton

#### Background

- As this isn't my property, I try to maintain the general look of the place.
- The front oval garden and the one along the Lincoln St. wall were here. I added others.
- I'm an environmentalist, not a gardener. I grow native plants and I remove invasive species
- I also grow native plants at another location now, so some examples are there not here

#### Learnings

*What are you trying to achieve?*

- Plants to support European honeybees? Our native bees? Our native butterflies? Our native birds?
- Can be a blend, can change, but helps to know
- I started growing native plants to support our native birds
  - Food for the insects our birds need to eat and feed their young (an eaten leaf is a good leaf)
  - Elderberry, other berry producers for food in migration, winter
  - Coneflowers, native thistles for Am Goldfinch young
- Sourcing plants expanded me to ones supporting native bees and butterflies
  - My native bee powerhouses: Showy Goldenrod, Field Thistle, New England aster, White Snakeroot, Anise Hyssop. Also Mountain Mint, but attracts many honeybees
  - Other goldenrod (ZigZag, BlueStem), Milkweed (Swamp, Butterfly Weed), asters, Blazing Star, Mondara A good resource: [gegearlab.weebly.com](http://gegearlab.weebly.com)
  - My caterpillar feeding plants include Swamp Milkweed (Monarch), Pussytoes (American Painted Lady), Little Bluestem (Hesperiidae species), Honewort (Black Swallowtail)
- There are bad plants as well as good plants
  - Black swallowwort – killer of Monarch caterpillars; Butterfly Bush – killer of butterflies

*Bigger picture*

- Something blooming from spring to fall
  - I concentrate on late summer/fall: goldenrod, asters, white snakeroot
  - Need to build out spring – pussy willow, native columbine
- Leave bare dirt; keep away leaf blowers

*Sourcing*

- Purchasing natives can get \$\$\$. Huge help: Winter Seed Sowing course
- Native Plant Trust plant exchange. Members only. Biennial at Garden in Woods
- Garden in Woods, Grow Native Massachusetts, Trustees of Reservations, Russells...

*Experiment*

- Plant in several locations; see where do best. Local soil isn't native soil.

*Chop*

- Some natives get \*unattractively\* tall: Showy Goldenrod, Flat-Topped Aster, native Thistle
- Many species can be cut back to lower height, increase #blooms, even extend bloom time
  - "Chelsea chop", cut at angle right above a lower leaf juncture
  - Cutting back Swamp Milkweed → tender regrowth → more appealing to Monarch butterflies

*Protect Judiciously*

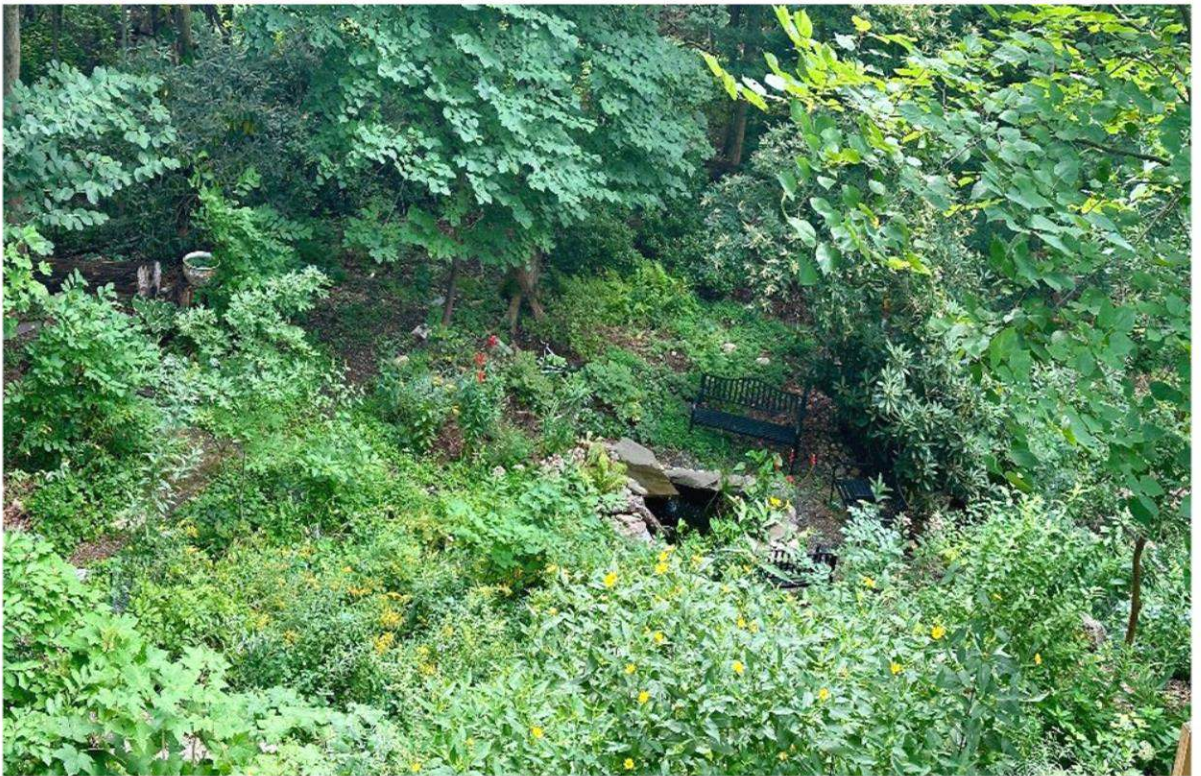
- Bunnies prefer young tender plants, too.
- Protectors include chicken wire and gutter guards; also mint plants
- Remove as appropriate, particularly around bushes. Bunnies have a right to be here, too.

## 48 Kingston Road, Newton Upper Falls

*Host: Alan Noguee*

**Note: 4 to 5:30 pm only!**

Abutting Cold Spring Park, this woodland and glade garden aims to support biodiversity with around 80 percent native plants among its 190+ species, emphasizing Dr. Doug Tallamy's keystone plants, Dr. Robert Gegear's plants for at-risk bees and butterflies, and shrubs to support Cold Spring Park's 173 bird species.



# 48 Kingston Road, Newton Upper Falls

Host: Alan Noguee

Note: 4 to 5:30 pm only!

## Anker-Noguee Garden Plant List

48 Kingston Rd., Newton

[alannoguee@yahoo.com](mailto:alannoguee@yahoo.com)

**Goals:** Maximize biodiversity with native plants, especially from Dr. Geegar's plant list for bees & butterflies at risk of local extinction; bird-friendly plantings to support Cold Spring Park as a birding hotspot; minimize external water use; leave the leaves and some native and non-invasive "weeds;" avoid chemicals (except for bamboo); use found and re-used materials; National Wildlife Federation habitat certification; Mystic-Charles Pollinator Pathway Group and Homegrown National Park identification.

\* Geegar list

x Non-native

xx Invasive

### Trees

Redbud\*  
Red oak\*  
Burr oak\*  
Black cherry  
Flowering dogwood  
Pagoda dogwood  
Red maple  
Tupelo  
River birch  
Silver maple  
Serviceberry  
American hophornbeam  
Pawpaw  
Chestnut oak\*  
Tulip tree  
Ash  
Weeping cherry x  
Norway maple xx

### Shrubs

Buttonbush\*  
Beach plum\*  
American holly\*  
Pussy willow\*  
Meadow willow\*  
Shrubby St. John's Wort\*  
Carolina rose\*  
Virginia rose\*  
Meadowsweet\*  
Steeplebush\*  
Low bush blueberry\*  
Highbush blueberry\*  
Northern spicebush  
Shadblow

Black chokeberry  
Red chokeberry  
Winterberry  
Fragrant sumac (low grow cultivar)  
Black elderberry  
Northern bayberry  
Arrowwood viburnum  
Wild Raisin viburnum  
Witherod viburnum  
American cranberry bush  
Maple leaf viburnum  
Leucothoe  
Rosebay rhododendron  
Bottlebrush buckeye  
Virginia sweetspire  
P J M rhododendron (hybrid)  
American hazelnut  
Oakleaf hydrangea  
Sweet pepper bush  
Witch hazel (native)  
Arborvitae  
Giant clethra x?  
Forsythia x  
Lilacs x  
Azalea hybrids x  
Asian holly x  
Rhododendron cultivars x  
Climbing hydrangea x  
Lacecap hydrangea x  
Rose of Sharon xx  
Asian panicle hydrangea x  
Asian witch hazel x  
Bamboo xx

### Herbaceous perennials

Common blue violet (wild)\*  
Wild Geranium\*  
Golden Alexander\*  
Heartleaf Alexander\*  
Hairy beardtongue\*  
Foxglove beardtongue\*

Wild lupine\*  
Hairy woodmint\*  
Downy woodmint\*  
Self-heal\*  
Yellow wild indigo\*  
Blue indigo  
Rose (swamp) milkweed\*  
Purple milkweed\*  
Butterfly milkweed\*  
Purple flowering raspberry\*  
Scarlet beebalm (cultivar)\*  
Wild bergamot\*  
Great St John's Wort\*  
Spotted St. John's Wort\*  
Narrowleaf mountain mint\*  
Hollow Joe Pye weed\*  
Coastal Joe Pye weed\*  
Giant purple hyssop\*  
Canada goldenrod\*  
Wrinkled-leaf goldenrod\*  
Obedient plant\*  
Showy goldenrod\*  
Gayfeather\*  
Blue lobelia\*  
Turtlehead\*  
Tall white flattop aster\*  
Calico aster\*  
New England aster  
New York aster  
Rough-stemmed goldenrod\*  
Bluestem golden rod  
Virginia bluebells  
Wild sarsaparilla  
Wood poppy  
Goatsbeard  
Black cohosh  
Black cohosh 'Black Beauty'  
(cultivar)  
Eastern Bluestar  
Ginger (native and Asian)  
False Solomon seal (wild) &  
variegated hybrid



# 48 Kingston Road, Newton Upper Falls

*Host: Alan Nogee*

**Note: 4 to 5:30 pm only!**

## Anker-Nogee Garden Plant List

48 Kingston Rd., Newton

[alannogee@yahoo.com](mailto:alannogee@yahoo.com)

King Solomon seal  
Foam flower  
Trout lily  
Ohio spiderwort (species and gold  
cultivar)  
Big leaf aster  
Zigzag goldenrod  
American spikenard  
Trillium grandiflorum  
White wood aster (wild)  
Blue wood aster (wild)  
Twinleaf  
Mayapple  
Barren strawberry  
Woodland sunflower  
Nodding onion  
New York Ironweed  
Blue vervain  
Spotted horsemint  
Cardinal flower  
Culver's root  
Garden phlox (cultivar)  
Upright yellow woodsorrel (wild)  
Pokeberry (wild)  
Beggartick (wild)  
Black-eyed Susan  
Rhomboid mercury (wild)  
Canada anemone (wild)  
Jewelweed\* (wild)  
Mad dog skullcap\*  
Yellow avens  
Low Smartweed (wild) x  
Daffodil x  
Siberian bugloss 'Jack Frost' x  
Lungwort x  
Lavender x  
Day Lilies x  
Hostas – 3 species x  
Asiatic day flower (wild) xx  
Astilbe x  
Garlic chives x  
Peonies x  
Bugleweed xx  
Dead nettle xx  
Periwinkle xx  
Siberian iris x  
Sweet woodruff x  
White clover x  
Clematis hybrid x

### Annuals

Catmint x  
Coleus x  
Begonia x

### Grasses and sedges

Pennsylvania sedge\*  
Seersucker sedge (wild)  
Yellow nut sedge (wild)  
Appalachian sedge  
Little bluestem\*  
Poverty oat grass  
River oat grass  
Black mondo grass x

### Vines

Virginia creeper  
Virgin's bower  
Trumpet vine  
Native honeysuckle  
Wintercreeper xx  
Climbing hydrangea x

### Ferns

Ostrich fern  
Cinnamon fern  
Hay-scented fern  
Sensitive Fern (wild)  
Marginal wood fern (wild)

### Pond plants

Pickerel weed\*  
Blue flag iris\*  
Marsh marigold  
Soft rush

>190 species, ~80% native  
>50 Gegee species

### Slope trail design & construction oversight, overall backyard landscape design

(not to be credited/blamed for subsequent denser plantings): Ted Chapman, Homeopathic Practitioner & Landscape Designer, <https://landscapehomeopath.com>

**Water Storage, Drainage, Pond,** additional tree & shrub placement: Brad Baker, White Oak Consulting, [www.white-oak-consulting.com](http://www.white-oak-consulting.com)

### Dr. Gegee plant list:

<https://gegearlab.weebly.com/planet-list.html>

# 48 Kingston Road, Newton Upper Falls

*Host: Alan Nogee*

**Note: 4 to 5:30 pm only!**

## Anker-Nogee Garden Plant List

48 Kingston Rd., Newton

[alannogee@yahoo.com](mailto:alannogee@yahoo.com)

King Solomon seal  
Foam flower  
Trout lily  
Ohio spiderwort (species and gold cultivar)  
Big leaf aster  
Zigzag goldenrod  
American spikenard  
Trillium grandiflorum  
White wood aster (wild)  
Blue wood aster (wild)  
Twinleaf  
Mayapple  
Barren strawberry  
Woodland sunflower  
Nodding onion  
New York Ironweed  
Blue vervain  
Spotted horsemint  
Cardinal flower  
Culver's root  
Garden phlox (cultivar)  
Upright yellow woodsorrel (wild)  
Pokeberry (wild)  
Beggartick (wild)  
Black-eyed Susan  
Rhomboid mercury (wild)  
Canada anemone (wild)  
Jewelweed\* (wild)  
Mad dog skullcap\*  
Yellow avens  
Low Smartweed (wild) x  
Daffodil x  
Siberian bugloss 'Jack Frost' x  
Lungwort x  
Lavender x  
Day Lilies x  
Hostas – 3 species x  
Asiatic day flower (wild) xx  
Astilbe x  
Garlic chives x  
Peonies x  
Bugleweed xx  
Dead nettle xx  
Periwinkle xx  
Siberian iris x  
Sweet woodruff x  
White clover x  
Clematis hybrid x

### Annuals

Catmint x  
Coleus x  
Begonia x

### Grasses and sedges

Pennsylvania sedge\*  
Seersucker sedge (wild)  
Yellow nut sedge (wild)  
Appalachian sedge  
Little bluestem\*  
Poverty oat grass  
River oat grass  
Black mondo grass x

### Vines

Virginia creeper  
Virgin's bower  
Trumpet vine  
Native honeysuckle  
Wintercreeper xx  
Climbing hydrangea x

### Ferns

Ostrich fern  
Cinnamon fern  
Hay-scented fern  
Sensitive Fern (wild)  
Marginal wood fern (wild)

### Pond plants

Pickerel weed\*  
Blue flag iris\*  
Marsh marigold  
Soft rush

>190 species, ~80% native  
>50 Gegeer species

### Slope trail design & construction oversight, overall backyard landscape design

(not to be credited/blamed for subsequent denser plantings): Ted Chapman, Homeopathic Practitioner & Landscape Designer, <https://landscapehomeopath.com>

**Water Storage, Drainage, Pond,** additional tree & shrub placement: Brad Baker, White Oak Consulting, [www.white-oak-consulting.com](http://www.white-oak-consulting.com)

### Dr. Gegeer plant list:

<https://gegearlab.weebly.com/planet-list.html>



## Pop-Up Native Plant Sale Cold Spring Park Farmers Market

*Tuesday, Sept 17, 2024 1:30-6:00 pm*

If you have been inspired by our Newton Pollinator Garden Tour to incorporate more native plants in your own garden, don't miss the Native Plant Pop-up Sale at the Cold Spring Park Farmers' Market. Grow Native Massachusetts, along with at least two other specialist vendors, Bluestem Natives and Lady Fern Farm, will have booths with some of your favorite native plants for sale! It's a great opportunity for the fall planting season, not to mention for picking up some fresh veggies and other goodies from the usual farmers market vendors!

<https://newtonconservators.org/events/native-plant-pop-up-sale-at-newton-farmers-market/>

**Cold Spring Park Farmer's Market**  
1200 Beacon Street, Newton, MA, 02461

**THANKS FOR ATTENDING THE  
NEWTON POLLINATOR GARDEN TOUR!**